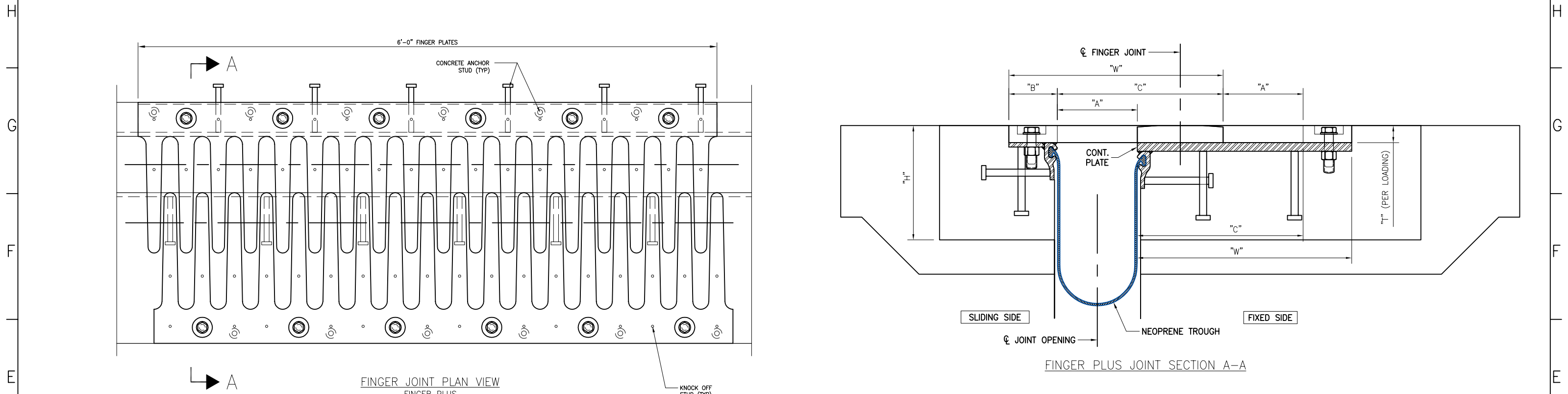


16 | 15 | 14 | 13 | 12 | 11 | 10 | 9 | 8 | 7 | 6 | 5 | 4 | 3 | 2 | 1



FINGER JOINT SIZE	MOVEMENT	JOINT OPENING "A"			BOLT LANDING LENGTH "B"	FINGER LENGTH "C"	BLOCKOUT DEPTH "H"	PLATE WIDTH "W"	PLATE THICKNESS "T"
		MIN.	MID.	MAX.					
600P	6	1	4	7	4.25	8.5	10	12.75	1
900P	9	1	5.5	10	4.25	11.5	10	15.75	1
1200P	12	1	7	13	4.25	14.5	10	18.75	1.25
1400P	14	1	8	15	4.25	16.5	11	20.75	1.5
1600P	16	1	9	17	4.25	18.5	11	22.75	1.5
1800P	18	1	10	19	4.25	20.5	12	24.75	1.5
2000P	20	1	11	21	4.25	22.5	12	26.75	1.75
2200P	22	1	12	23	4.25	24.5	13	28.75	1.75
2400P	24	1	13	25	4.25	26.5	13	30.75	2

**NOTES:**  
 Materials to be ASTM A709, A588, or A36. Alternate Materials available upon request  
 Corrosion protection to be Hot Dipped Galvanized, Alternate Coating available upon request  
 Above drawing is only a generic representation and full application shop drawings once order is received

DRAWING ACTION:	TOLERANCES (UNLESS OTHERWISE SPECIFIED) ALL DIMENSIONS ARE IN INCHES
	DECIMAL: X ±.030 .XX ±.015 .XXX ±.010
DATE X/XX/XX	FRACTION:
	OVERALL LGTH: -0 +1/8" ANGULAR: ±2° (FAB) / ±1° (FORM) LINEAR (DTLS): ±1/16 HOLE SIZE/DEPTH: +1/16 -0 SWEEP/CAMBER: ASTM A6 T21 STUD LOCATION: ±1 HOLE LOCATION: ±1/2 BUTT SPLICE LOCATION: ±1/2 WELD LOCATIONS PER APPLICABLE CODE/SPEC



Watson Bowman Acme Corp.  
 95 Pineview Drive Amherst, NY 14228  
 phone: (716) 691-7566 fax: (716) 691-9239  
 www.wbacorp.com



Information provided herein, including but not limited to, any drawing, design, photograph, graphic, or statement(s) ("Materials") are proprietary and the property of Watson Bowman Acme Corporation ("Company"). Reproduction, translation, or reduction to any electronic medium or machine readable form, in whole or part, is strictly prohibited, except for the express purpose for which it has been furnished, without prior written consent of Company. All materials contained herein are provided by Company for information purposes only. Company reserves the right to amend or withdraw any information contained in the Materials without notice. All technical or other advice by Company, whether verbal or written, concerning products, or the use of products in specific situations ("Advice") is given by Company and is used at the Users own risk.

NO.	DESCRIPTION	NAME	DATE	DETAILED BY:	DATE:
				CTM	02/09/22
PROJECT:	Wabo@FingerPlus Finger Joint Sales Proposal Drawing	NO.	DATE	CHECKED BY:	DATE:
				JW	XX/XX/XX
				SCALE:	WBA JOB NO.:
				NTS	FINGER
SHEET NO.:		DRAWING NO.:		REV.:	
1 of 4		SP-FIN 01		0	

16 | 15 | 14 | 13 | 12 | 11 | 10 | 9 | 8 | 7 | 6 | 5 | 4 | 3 | 2 | 1