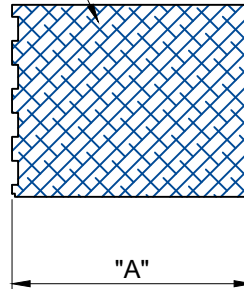


Wabo®Evazote U.V.



() - Denotes Millimeters

Movement Chart

Model	"A" @ Min	"A" @ Max	Total Movement
Evazote 1" x 1"	.40" (10)	1.30" (33)	.90" (23)
Evazote 1 1/4" x 2"	.50" (13)	1.630" (41)	1.130" (29)
Evazote 1 9/16" x 2"	.625" (16)	2.030" (51)	1.405" (36)
Evazote 1 23/32" x 2"	.75" (19)	2.250" (57)	1.500" (38)
Evazote 1 7/8" x 2"	.75" (19)	2.430" (62)	1.680" (43)
Evazote 2 3/16" x 2"	.88" (22)	2.850" (72)	1.970" (50)
Evazote 2 1/2" x 2"	1.00" (25)	3.250" (83)	2.250" (57)
Evazote 2 13/16" x 2 1/2"	1.120" (28)	3.650" (93)	2.530" (64)
Evazote 3 1/8" x 2 1/2"	1.250" (32)	4.070" (103)	2.820" (72)
Evazote 3 7/16" x 2 1/2"	1.380" (35)	4.470" (114)	3.090" (78)
Evazote 3 3/4" x 2 1/2"	1.50" (38)	4.880" (124)	3.380" (86)
Evazote 4 1/16" x 3"	1.620" (41)	5.280" (134)	3.660" (93)
Evazote 4 3/8" x 3"	1.750" (45)	5.690" (145)	3.940" (100)
Evazote 4 11/16" x 3"	1.870" (48)	6.080" (154)	4.210" (107)
Evazote 5" x 4"	2.00" (51)	6.500" (165)	4.500" (114)
Evazote 5 3/8" x 4"	2.150" (55)	6.980" (177)	4.840" (123)
Evazote 5 5/8" x 4"	2.250" (57)	7.310" (186)	5.060" (129)
Evazote 6" x 4"	2.400" (61)	7.800" (198)	5.400" (137)
Evazote 6 1/4" x 5"	2.500" (64)	8.130" (206)	5.630" (143)
Evazote 6 1/2" x 5"	2.600" (66)	8.450" (215)	5.850" (149)

PROJECT NAME: -

PROJECT LOCATION: -

DRAWING DESCRIPTION:

Wabo®Evazote UV

DATE: 01/04/2021

MODEL: UV



Watson Bowman Acme
 95 Pineview Drive Amherst, NY 14228
 phone: (716) 691-7566 fax: (716) 691-9239
www.watsonbowmanacme.com

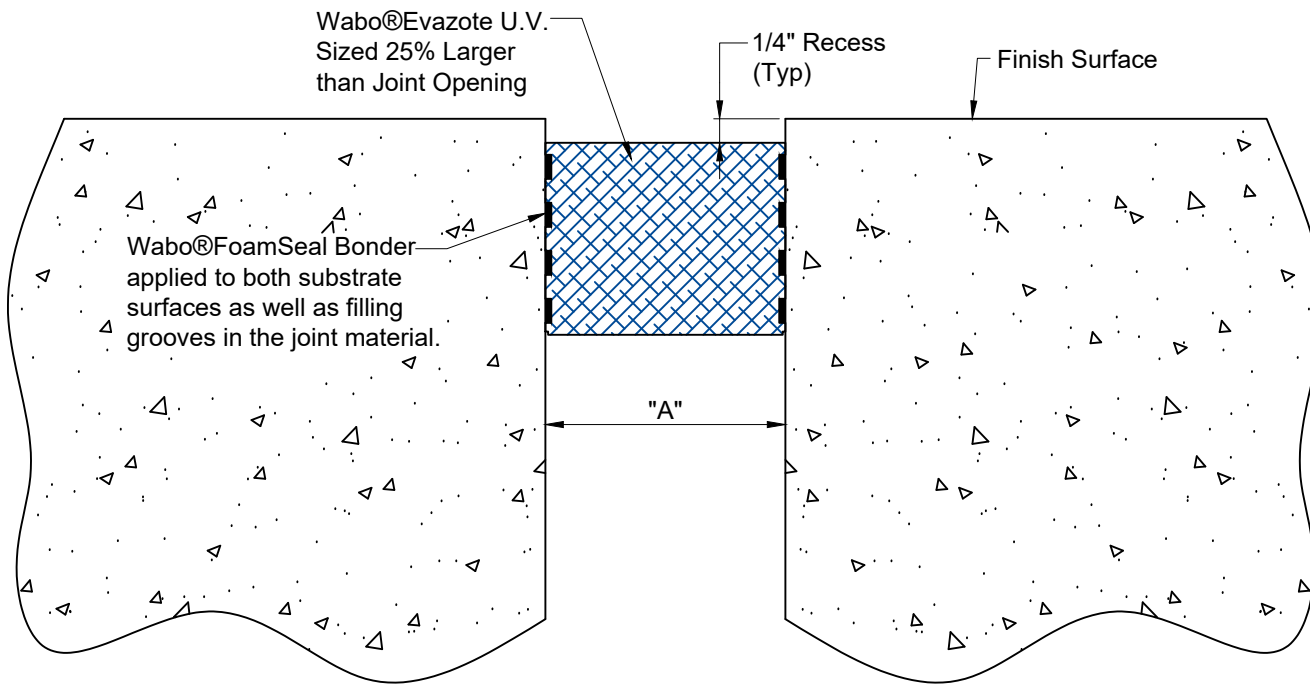
A brand of
MBC GROUP

Information provided herein, including but not limited to, any drawing, design, photograph, graphic, or statement(s) ("Materials") are proprietary and the property of Watson Bowman Acme Corporation ("Company"). Reproduction, translation, or reduction to any electronic medium or machine readable form, in whole or part, is strictly prohibited, except for the express purpose for which it has been furnished, without prior written consent of Company. All Materials contained herein are provided by Company for information purposes only. Company reserves the right to amend or withdraw any information contained in the Materials without notice. All technical or other advice by Company, whether verbal or written, concerning products, or the use of products in specific situations ("Advice") is given by Company and is used at the Users own risk.

REVISION NO:
2

SHEET NO:
1 of 6

DRAWING NO:
C-24199



Concrete Blockout Condition

() - Denotes Millimeters

Movement Chart			
Model	"A" @ Min	"A" @ Max	Total Movement
Evazote 1" x 1"	.40" (10)	1.30" (33)	.90" (23)
Evazote 1 1/4" x 2"	.50" (13)	1.630" (41)	1.130" (29)
Evazote 1 9/16" x 2"	.625" (16)	2.030" (51)	1.405" (36)
Evazote 1 23/32" x 2"	.75" (19)	2.250" (57)	1.500" (38)
Evazote 1 7/8" x 2"	.75" (19)	2.430" (62)	1.680" (43)
Evazote 2 3/16" x 2"	.88" (22)	2.850" (72)	1.970" (50)
Evazote 2 1/2" x 2"	1.00" (25)	3.250" (83)	2.250" (57)
Evazote 2 13/16" x 2 1/2"	1.120" (28)	3.650" (93)	2.530" (64)
Evazote 3 1/8" x 2 1/2"	1.250" (32)	4.070" (103)	2.820" (72)
Evazote 3 7/16" x 2 1/2"	1.380" (35)	4.470" (114)	3.090" (78)
Evazote 3 3/4" x 2 1/2"	1.50" (38)	4.880" (124)	3.380" (86)
Evazote 4 1/16" x 3"	1.620" (41)	5.280" (134)	3.660" (93)
Evazote 4 3/8" x 3"	1.750" (45)	5.690" (145)	3.940" (100)
Evazote 4 11/16" x 3"	1.870" (48)	6.080" (154)	4.210" (107)
Evazote 5" x 4"	2.00" (51)	6.500" (165)	4.500" (114)
Evazote 5 3/8" x 4"	2.150" (55)	6.980" (177)	4.840" (123)
Evazote 5 5/8" x 4"	2.250" (57)	7.310" (186)	5.060" (129)
Evazote 6" x 4"	2.400" (61)	7.800" (198)	5.400" (137)
Evazote 6 1/4" x 5"	2.500" (64)	8.130" (206)	5.630" (143)
Evazote 6 1/2" x 5"	2.600" (66)	8.450" (215)	5.850" (149)

PROJECT NAME: -

PROJECT LOCATION: -

DRAWING DESCRIPTION:
Wabo®Evazote UV

DATE: 01/04/2021

MODEL: UV



Watson Bowman Acme
 95 Pineview Drive Amherst, NY 14228
 phone: (716) 691-7566 fax: (716) 691-9239
 www.watsonbowmanacme.com

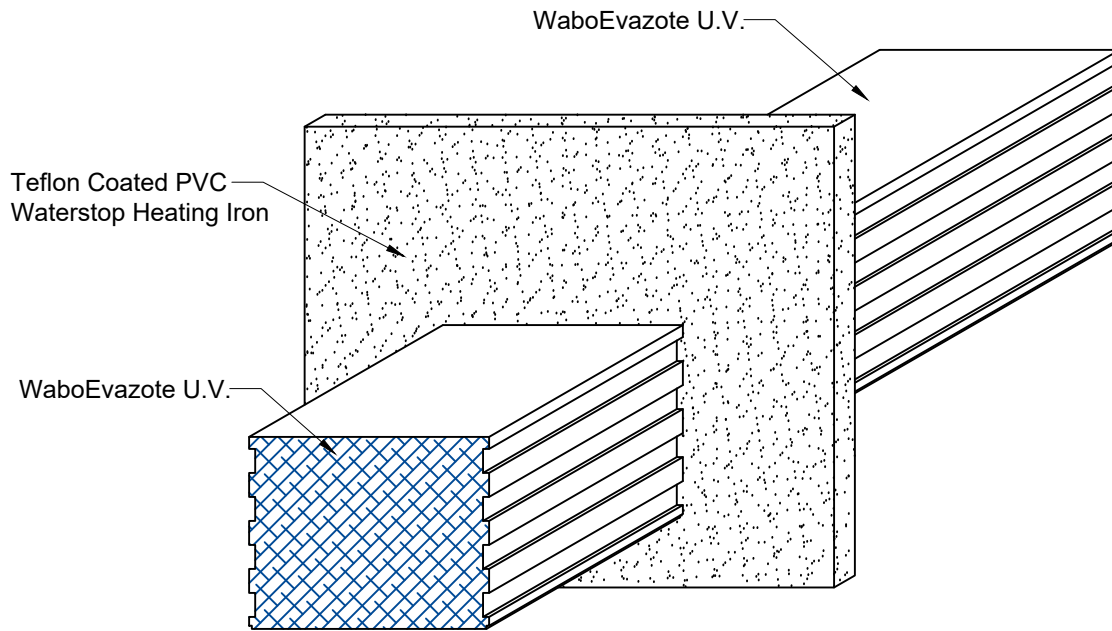
A brand of **MBC GROUP**

Information provided herein, including but not limited to, any drawing, design, photograph, graphic, or statement(s) ("Materials") are proprietary and the property of Watson Bowman Acme Corporation ("Company"). Reproduction, translation, or reduction to any electronic medium or machine readable form, in whole or part, is strictly prohibited, except for the express purpose for which it has been furnished, without prior written consent of Company. All Materials contained herein are provided by Company for information purposes only. Company reserves the right to amend or withdraw any information contained in the Materials without notice. All technical or other advice by Company, whether verbal or written, concerning products, or the use of products in specific situations ("Advice") is given by Company and is used at the Users own risk.

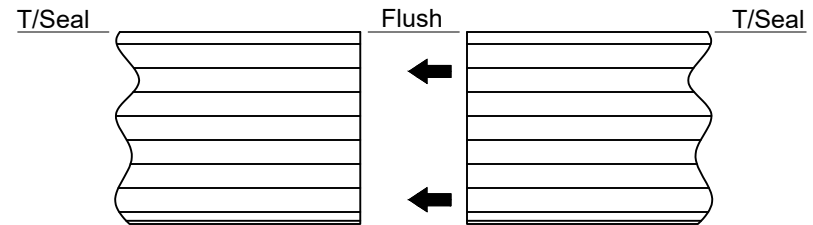
REVISION NO:
2

SHEET NO:
2 of 6

DRAWING NO:
C-24199



Step 1: Hold both ends of the seal flat against the heating iron for a couple of seconds.



Step 2: After applying seal to heat plate, align seal faces and compress together for about 1 minute.

Step 3: Allow splice area to cool before maneuvering seal and installing into joint opening.

Splicing Requirements

PROJECT NAME: -

PROJECT LOCATION: -

DRAWING DESCRIPTION:

Wabo®Evazote UV

DATE: 01/04/2021

MODEL: UV



Watson Bowman Acme
95 Pineview Drive Amherst, NY 14228
phone: (716) 691-7566 fax: (716) 691-9239
www.watsonbowmanacme.com

A brand of
MBCC GROUP

Information provided herein, including but not limited to, any drawing, design, photograph, graphic, or statement(s) ("Materials") are proprietary and the property of Watson Bowman Acme Corporation ("Company"). Reproduction, translation, or reduction to any electronic medium or machine readable form, in whole or part, is strictly prohibited, except for the express purpose for which it has been furnished, without prior written consent of Company. All Materials contained herein are provided by Company for information purposes only. Company reserves the right to amend or withdraw any information contained in the Materials without notice. All technical or other advice by Company, whether verbal or written, concerning products, or the use of products in specific situations ("Advice") is given by Company and is used at the Users own risk.

REVISION NO:

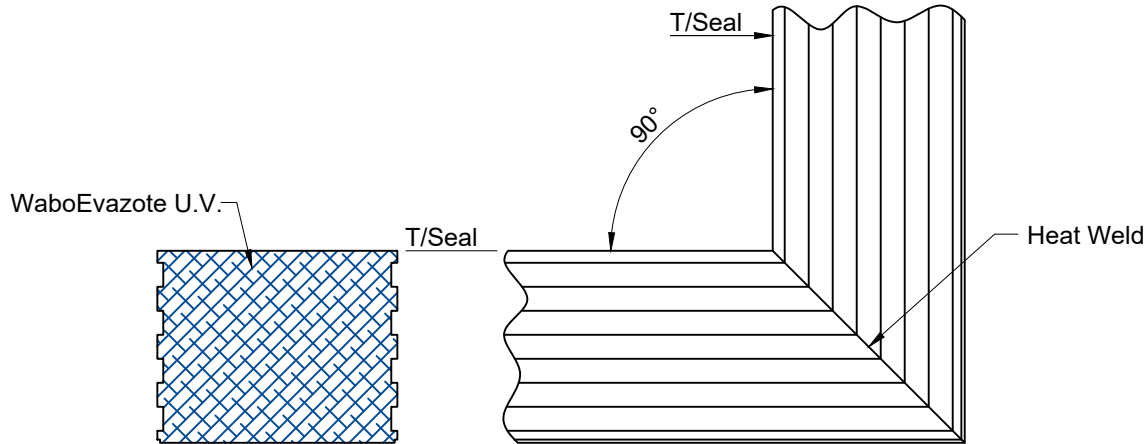
2

SHEET NO:

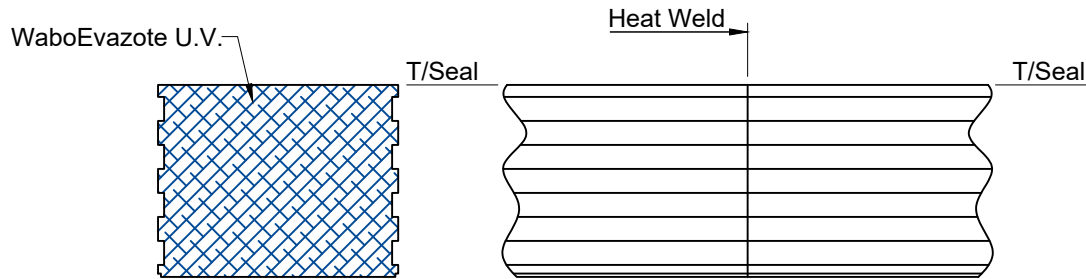
3 of 6

DRAWING NO:

C-24199

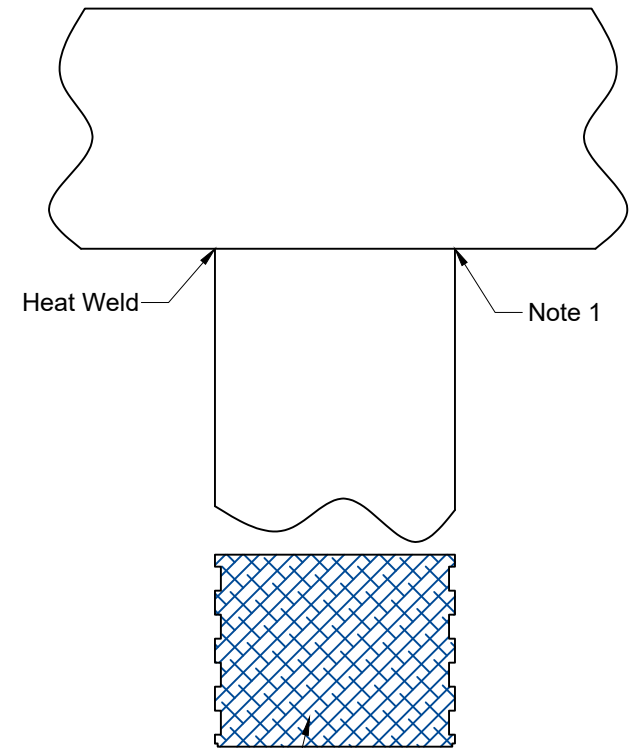


90° Upturn



Typical Butt Weld

Directional Changes



"T" Transition

General Notes:

When cutting WaboEvazote U.V. product, WBA recommends using a hacksaw with a miter box. This will ensure a smooth straight cut.

Notes:

1. Lightly grind side of seal to remove ribs at the location where the transition is going to take place with a ZEC blade or equal. Exercise care not to damage the seal during this process. After ribs have been removed, proceed with heat welding the two seals together.

PROJECT NAME: -

PROJECT LOCATION: -

DRAWING DESCRIPTION:

Wabo®Evazote UV

DATE: 01/04/2021

MODEL: UV



Watson Bowman Acme
95 Pineview Drive Amherst, NY 14228
phone: (716) 691-7566 fax: (716) 691-9239
www.watsonbowmanacme.com

A brand of
MBCC GROUP

Information provided herein, including but not limited to, any drawing, design, photograph, graphic, or statement(s) ("Materials") are proprietary and the property of Watson Bowman Acme Corporation ("Company"). Reproduction, translation, or reduction to any electronic medium or machine readable form, in whole or part, is strictly prohibited, except for the express purpose for which it has been furnished, without prior written consent of Company. All Materials contained herein are provided by Company for information purposes only. Company reserves the right to amend or withdraw any information contained in the Materials without notice. All technical or other advice by Company, whether verbal or written, concerning products, or the use of products in specific situations ("Advice") is given by Company and is used at the Users own risk.

REVISION NO:

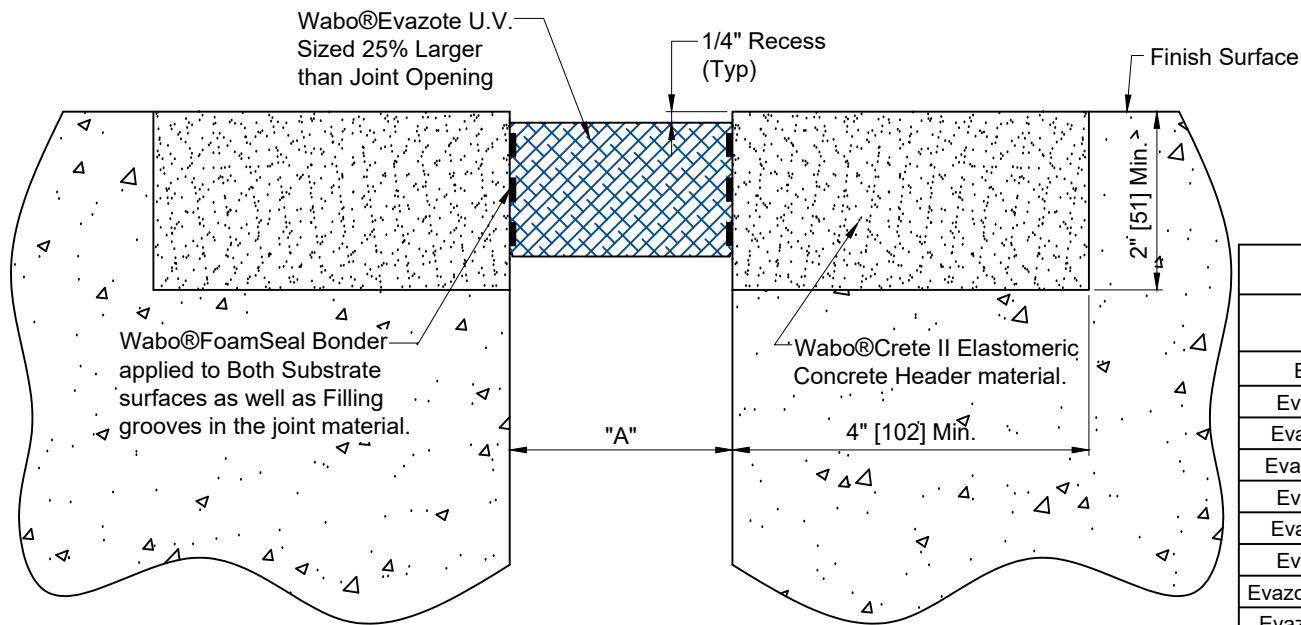
2

SHEET NO:

4 of 6

DRAWING NO:

C-24199



() - Denotes Millimeters

Movement Chart

Model	"A" @ Min	"A" @ Max	Total Movement
Evazote 1" x 1"	.40" (10)	1.30" (33)	.90" (23)
Evazote 1 1/4" x 2"	.50" (13)	1.630" (41)	1.130" (29)
Evazote 1 9/16" x 2"	.625" (16)	2.030" (51)	1.405" (36)
Evazote 1 23/32" x 2"	.75" (19)	2.250" (57)	1.500" (38)
Evazote 1 7/8" x 2"	.75" (19)	2.430" (62)	1.680" (43)
Evazote 2 3/16" x 2"	.88" (22)	2.850" (72)	1.970" (50)
Evazote 2 1/2" x 2"	1.00" (25)	3.250" (83)	2.250" (57)
Evazote 2 13/16" x 2 1/2"	1.120" (28)	3.650" (93)	2.530" (64)
Evazote 3 1/8" x 2 1/2"	1.250" (32)	4.070" (103)	2.820" (72)
Evazote 3 7/16" x 2 1/2"	1.380" (35)	4.470" (114)	3.090" (78)
Evazote 3 3/4" x 2 1/2"	1.50" (38)	4.880" (124)	3.380" (86)
Evazote 4 1/16" x 3"	1.620" (41)	5.280" (134)	3.660" (93)
Evazote 4 3/8" x 3"	1.750" (45)	5.690" (145)	3.940" (100)
Evazote 4 11/16" x 3"	1.870" (48)	6.080" (154)	4.210" (107)
Evazote 5" x 4"	2.00" (51)	6.500" (165)	4.500" (114)
Evazote 5 3/8" x 4"	2.150" (55)	6.980" (177)	4.840" (123)
Evazote 5 5/8" x 4"	2.250" (57)	7.310" (186)	5.060" (129)
Evazote 6" x 4"	2.400" (61)	7.800" (198)	5.400" (137)
Evazote 6 1/4" x 5"	2.500" (64)	8.130" (206)	5.630" (143)
Evazote 6 1/2" x 5"	2.600" (66)	8.450" (215)	5.850" (149)

Wabo®Evazote in Wabo®Crete II Elastomeric Concrete

PROJECT NAME: -

PROJECT LOCATION: -

DRAWING DESCRIPTION:

Wabo®Evazote UV

DATE: 01/04/2021

MODEL: UV



Watson Bowman Acme
95 Pineview Drive Amherst, NY 14228
phone: (716) 691-7566 fax: (716) 691-9239
www.watsonbowmanacme.com

A brand of
MBC GROUP

Information provided herein, including but not limited to, any drawing, design, photograph, graphic, or statement(s) ("Materials") are proprietary and the property of Watson Bowman Acme Corporation ("Company"). Reproduction, translation, or reduction to any electronic medium or machine readable form, in whole or part, is strictly prohibited, except for the express purpose for which it has been furnished, without prior written consent of Company. All Materials contained herein are provided by Company for information purposes only. Company reserves the right to amend or withdraw any information contained in the Materials without notice. All technical or other advice by Company, whether verbal or written, concerning products, or the use of products in specific situations ("Advice") is given by Company and is used at the Users own risk.

REVISION NO:

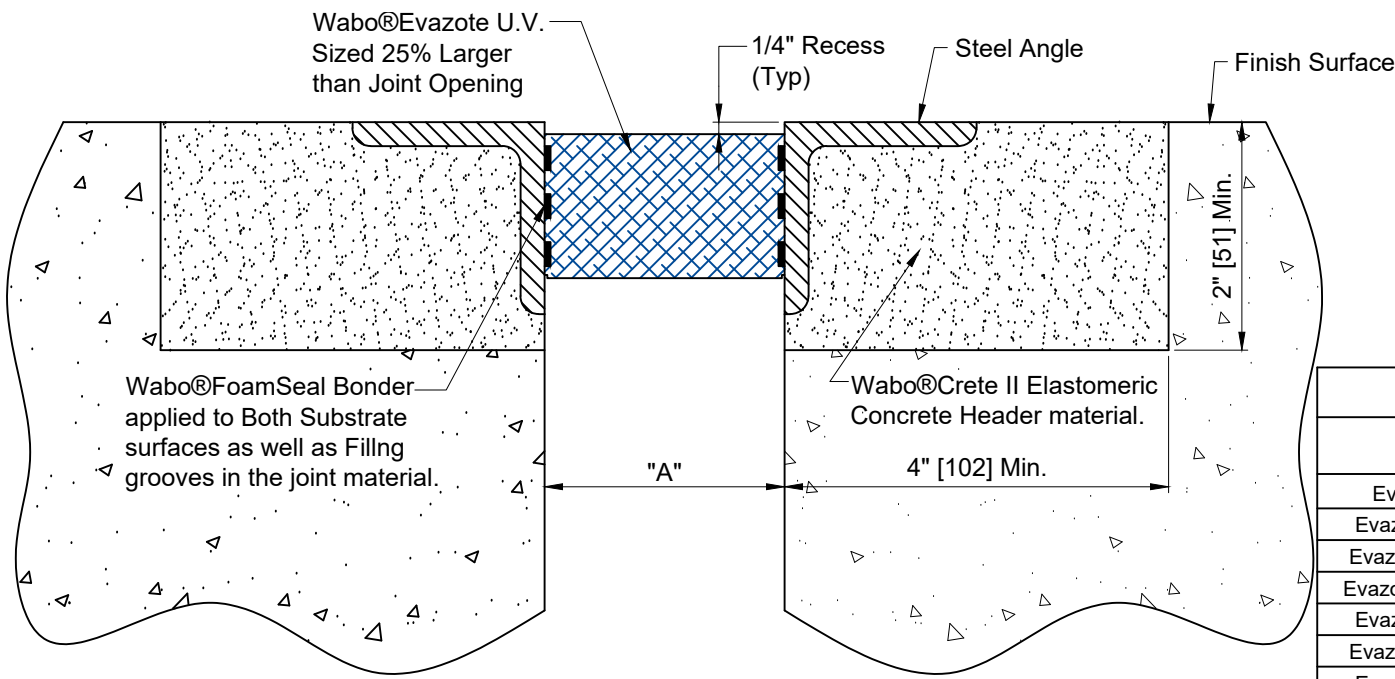
2

SHEET NO:

5 of 6

DRAWING NO:

C-24199



() - Denotes Millimeters

Movement Chart

Model	"A" @ Min	"A" @ Max	Total Movement
Evazote 1" x 1"	.40" (10)	1.30" (33)	.90" (23)
Evazote 1 1/4" x 2"	.50" (13)	1.630" (41)	1.130" (29)
Evazote 1 9/16" x 2"	.625" (16)	2.030" (51)	1.405" (36)
Evazote 1 23/32" x 2"	.75" (19)	2.250" (57)	1.500" (38)
Evazote 1 7/8" x 2"	.75" (19)	2.430" (62)	1.680" (43)
Evazote 2 3/16" x 2"	.88" (22)	2.850" (72)	1.970" (50)
Evazote 2 1/2" x 2"	1.00" (25)	3.250" (83)	2.250" (57)
Evazote 2 13/16" x 2 1/2"	1.120" (28)	3.650" (93)	2.530" (64)
Evazote 3 1/8" x 2 1/2"	1.250" (32)	4.070" (103)	2.820" (72)
Evazote 3 7/16" x 2 1/2"	1.380" (35)	4.470" (114)	3.090" (78)
Evazote 3 3/4" x 2 1/2"	1.50" (38)	4.880" (124)	3.380" (86)
Evazote 4 1/16" x 3"	1.620" (41)	5.280" (134)	3.660" (93)
Evazote 4 3/8" x 3"	1.750" (45)	5.690" (145)	3.940" (100)
Evazote 4 11/16" x 3"	1.870" (48)	6.080" (154)	4.210" (107)
Evazote 5" x 4"	2.00" (51)	6.500" (165)	4.500" (114)
Evazote 5 3/8" x 4"	2.150" (55)	6.980" (177)	4.840" (123)
Evazote 5 5/8" x 4"	2.250" (57)	7.310" (186)	5.060" (129)
Evazote 6" x 4"	2.400" (61)	7.800" (198)	5.400" (137)
Evazote 6 1/4" x 5"	2.500" (64)	8.130" (206)	5.630" (143)
Evazote 6 1/2" x 5"	2.600" (66)	8.450" (215)	5.850" (149)

**Wabo®Evazote in Armored Edge Condition
w/Wabo®Crete II Elastomeric Concrete**

PROJECT NAME: _____

PROJECT LOCATION: _____

DRAWING DESCRIPTION:
Wabo®Evazote UV

DATE: 01/04/2021

MODEL: UV



Watson Bowman Acme
95 Pineview Drive Amherst, NY 14228
phone: (716) 691-7566 fax: (716) 691-9239
www.watsonbowmanacme.com

A brand of **MBC GROUP**

Information provided herein, including but not limited to, any drawing, design, photograph, graphic, or statement(s) ("Materials") are proprietary and the property of Watson Bowman Acme Corporation ("Company"). Reproduction, translation, or reduction to any electronic medium or machine readable form, in whole or part, is strictly prohibited, except for the express purpose for which it has been furnished, without prior written consent of Company. All Materials contained herein are provided by Company for information purposes only. Company reserves the right to amend or withdraw any information contained in the Materials without notice. All technical or other advice by Company, whether verbal or written, concerning products, or the use of products in specific situations ("Advice") is given by Company and is used at the Users own risk.

REVISION NO:
2

SHEET NO:
6 of 6

DRAWING NO:
C-24199