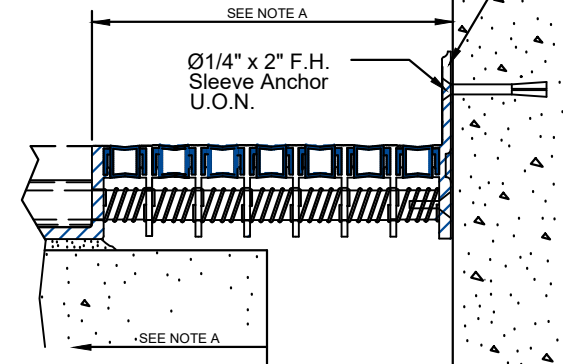


VIP-2625 DETAIL
FLOOR-TO-FLOOR CONDITION

Notes:

A: System Width And Blockout Width For Floor-to-wall Is The Same As Floor-to-floor

B: When Floor-to-floor System Is Being Used In Conjunction With Floor-to-wall System, The Floor-to-floor System Must Be Offset From Centerline Of Joint Opening When Installed To Be In Alignment With Floor-to-wall System.



VIP-2625C DETAIL
FLOOR-TO-WALL CONDITION

PROJECT NAME: -

PROJECT LOCATION: -

DRAWING DESCRIPTION:

Wabo®VIP

DATE: 05/2021

MODEL: VIP



Watson Bowman Acme
95 Pineview Drive Amherst, NY 14228
phone: (716) 691-7566 fax: (716) 691-9239
www.watsonbowmanacme.com

A brand of
MBCC GROUP

Information provided herein, including but not limited to, any drawing, design, photograph, graphic, or statement(s) ("Materials") are proprietary and the property of Watson Bowman Acme Corporation ("Company"). Reproduction, translation, or reduction to any electronic medium or machine readable form, in whole or part, is strictly prohibited, except for the express purpose for which it has been furnished, without prior written consent of Company. All Materials contained herein are provided by Company for information purposes only. Company reserves the right to amend or withdraw any information contained in the Materials without notice. All technical or other advice by Company, whether verbal or written, concerning products, or the use of products in specific situations ("Advice") is given by Company and is used at the Users own risk.

REVISION NO:

SHEET NO:

6

DRAWING NO:

C95056