

**Watson
Bowman
Acme**



Wabo®FS Bridge Seal

**PRE-COMPRESSED, FOAM-SUPPORTED
SILICONE BRIDGE JOINT SYSTEM**

- Fast, simple installation
- Highway-grade, UV-stable silicone facing
- Factory made transitions available
- Used with easy-apply Wabo®Gel Adhesive



BUILDING TRUST



Wabo®FS Bridge Seal

PRE-COMPRESSED, FOAM-SUPPORTED SILICONE BRIDGE JOINT SYSTEM

DESCRIPTION

Wabo®FS Bridge Seal is a pre-compressed, foam-supported silicone bridge joint system. This is a self-expanding foam seal with a highway grade UV Stable silicone. The foam seal is designed to be permanently bonded to the joint substrate with a user-friendly field applied Wabo®Gel Adhesive.

APPLICATIONS

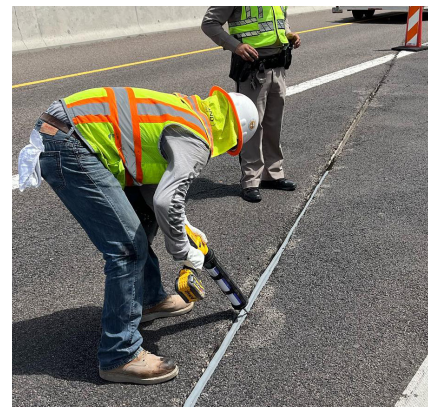
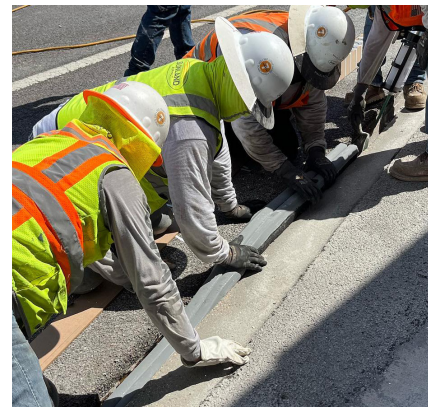
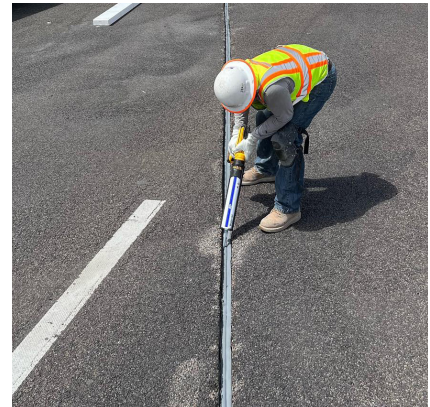
- Bridges and Highways
- Repair and Maintenance
- Parapets and soundwalls
- Secondary Seal to other joint systems

FEATURES/ BENEFITS

- Simple installation for quick joint repairs and short traffic closures
- Can be used in retrofit of armored joints
- Factory assembled transitions made to meet custom job configurations where a field configured transition is impractical.
- Does not require any invasive anchoring or bolting
- Movement range of +/- 60% of joint gap

PHYSICAL PROPERTIES

Physical Property	Test Methods	Requirements
Color	Visual	Gray
Durometer (Shore A)	ASTM C 661	20
Resilience	ASTM D5329	> 95%
Tensile Strength	ASTM D412	140 psi
Joint modulus at 50% 100% 150%	D3374 E	7 psi max 8 psi max 9 psi max
Elongation @ break	D3574 E	>1400%
Weatherability		Unaffected by climate extremes
Flexibility		Cured sealant stable from -50°F to 300°F



FOR MORE INFORMATION:

Contact Sika: Phone 800.933.SIKA(7452) Website: usa.sika.com

Sika Corporation
201 Polito Avenue
Lyndhurst, NJ 07071
Phone: 201-933-8800
Fax: 201-933-6225

Watson Bowman Acme
95 Pineview Dr.
Amherst, NY 14228
Phone: 716-691-7566
Fax: 716-691-9239



BUILDING TRUST

