

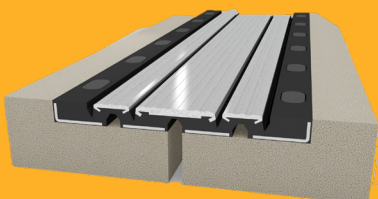
**Watson
Bowman
Acme**



Wabo®Flex

MOLDED RUBBER SEGMENTAL EXPANSION JOINT SYSTEM

- Exposed riding surface designed with aluminum skid resistance plates
- Design minimizes debris
- Durable, steel-reinforced rubber



BUILDING TRUST



Wabo®Flex

MOLDED RUBBER SEGMENTAL EXPANSION JOINT SYSTEM

DESCRIPTION

Molded rubber segmental expansion joint system designed for heavy traffic and snowplow loading, making it an excellent choice for various joint applications.

APPLICATIONS

- Bridge decks and ramps
- Repair and New construction
- Staged construction
- Shallow concrete depths

FEATURES/ BENEFITS

- Minimal exposed gap prevents ice and debris accumulation
- Strength of steel combined with flexibility of rubber
- Tongue and groove connection remove need for welding
- Can accommodate structural movements up to 13 inches



PHYSICAL PROPERTIES

Physical Property	ASTM Test Method	Requirements
Tensile Strength, min	D 412	1,800 psi
Elongation at Break, min	D 412	400%
Hardness, Shore A	D 2240	45 +/- 5
Compression Set, 22 hrs @158F	D 395	20%
Oil Swell, 70 hrs. @212F	D 471	120%
Ozone Resistance	D 1149	no cracks
Low Temperature Brittleness	D 746	not brittle

FOR MORE INFORMATION:

Contact Sika: Phone 800.933.SIKA(7452) Website: usa.sika.com

Sika Corporation
201 Polito Avenue
Lyndhurst, NJ 07071
Phone: 201-933-8800
Fax: 201-933-6225

Watson Bowman Acme
95 Pineview Dr.
Amherst, NY 14228
Phone: 716-691-7566
Fax: 716-691-9239



BUILDING TRUST

