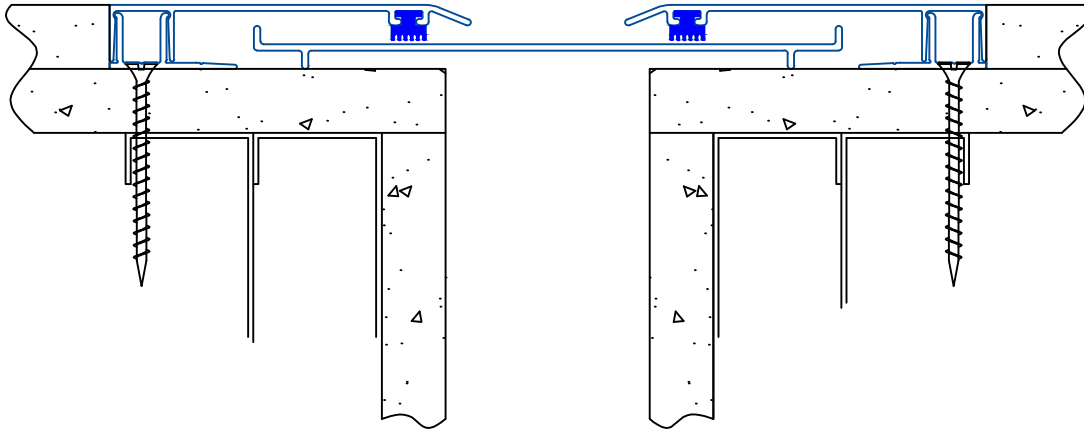




Installation Procedure

Watson Bowman Acme Corp. 95 Pineview Drive Amherst, NY 14228
phone: (716) 691-7566 fax: (716) 691-9239
website: www.wbacorp.com

Information provided herein, including but not limited to, any drawing, design, photograph, graphic, or statement(s) ("Materials") are proprietary and the property of Watson Bowman Acme Corporation ("Company"). Reproduction, translation, or reduction to any electronic medium or machine readable form, in whole or part, is strictly prohibited, except for the express purpose for which it has been furnished, without prior written consent of Company. All Materials contained herein are provided by Company for information purposes only. Company reserves the right to amend or withdraw any information contained in the Materials without notice. All technical or other advice by Company, whether verbal or written, concerning products, or the use of products in specific situations ("Advice") is given by Company and is used at the Users own risk.



Wabo® Contour - Professional Series Model(s) "CTR" 100-600 Vertical Expansion Control Systems

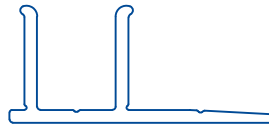
The following installation procedure is very important and must be fully understood prior to beginning any work. To ensure proper installation and performance of expansion joint system the following actions must be completed by the installing contractor. Failure to do so will affect product warranty.

- 1) Carefully read and understand installation procedure. Contact WBA's Technical Service Department at (800) 677-4922 for product assistance.
- 2) Inspect all shipments and materials for missing or damaged components and hardware. Contact Customer Service at (800) 677-4922 with WBA's order number and invoice for prompt assistance.
- 3) Inspect substrate or adjacent construction for acceptance before beginning work. Report unacceptable construction to the project manager for scheduled repair work.
- 4) Review WBA shop drawings for project specific detailed information if Engineering services were purchased at time of order.

Standard Components

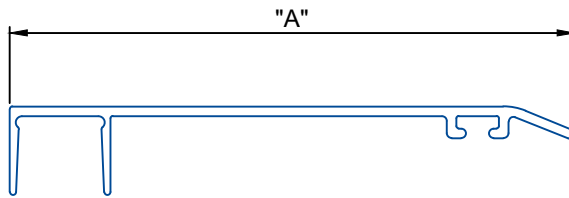


PVC Gasket
P/n: 2838



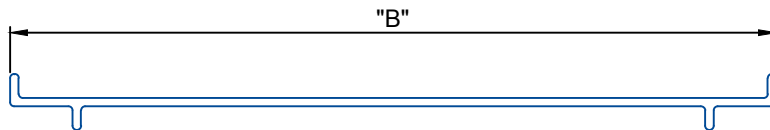
Base Extrusion
P/n: 11862

Components shown below vary in size depending on model of system



Anodized Aluminum Face Extrusion
(Refer to Chart for size and P/N's)

Model	"A"	P/n
CTR-100	3 17/32"	11854
CTR-200	3 17/32"	11854
CTR-300	3 17/32"	11854
CTR-400	5 1/32"	11860
CTR-500	5 1/32"	11860
CTR-600	5 1/32"	11860



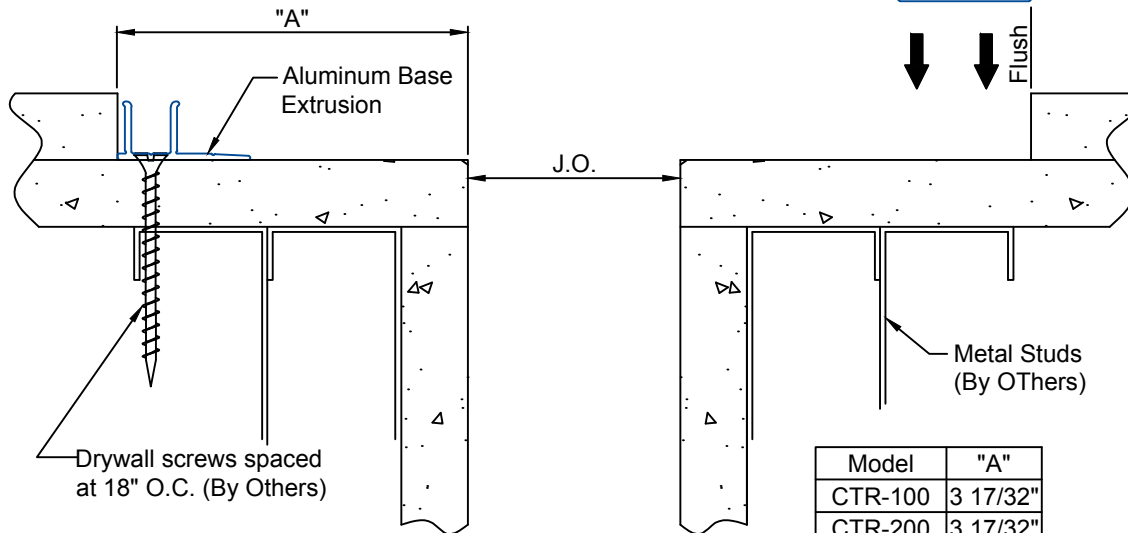
Anodized Aluminum Slide Plate
(Refer to Chart for size and P/N's)

Model	"B"	P/n
CTR-100	5 3/4"	11855
CTR-200	5 3/4"	11855
CTR-300	5 3/4"	11855
CTR-400	10 1/4"	11861
CTR-500	10 1/4"	11861
CTR-600	10 1/4"	11861

Installation Procedure

Sheet
2
of 3

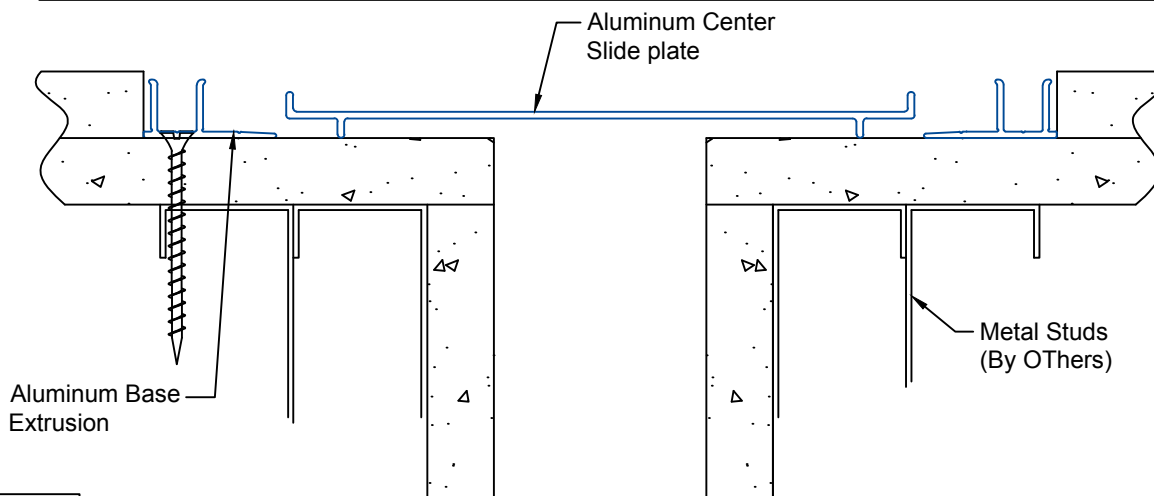
Watson Bowman Acme Corp.
95 Pineview Drive Amherst, NY 14228
phone: (716) 691-7566 fax: (716) 691-9239
website: www.wbcorp.com



- 1 Position Aluminum Base Extrusion flush with Joint Opening. Field drill holes through the base extrusion and metal stud spaced at 18" O.C. Once the holes have been drilled, fasten base extrusion to wall with drywall screws (By Others).

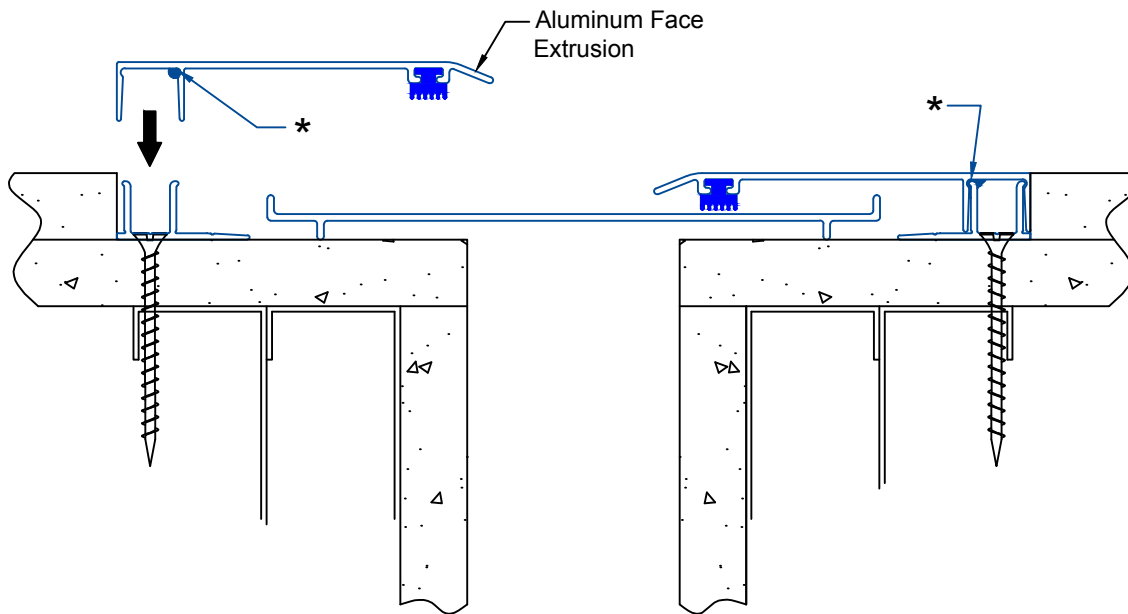


- 2 Cut PVC Gasket material to length and slide the gasket into groove on the Aluminum Face Extrusion.



- 3 Position and center Aluminum Slide Plate against the base of the blockout.

Installation procedure: CTR 100-600 Contour system
Watson Bowman Acme Corp. reserves the right to amend or withdraw any information contained herein without notice and will not be responsible for any inaccuracy or ambiguity of any information contained herein.



4

* Apply Continuous Bead (start 1.2" from either end) of Dow Corning 75 Grey Sealant Adhesive(WBA Part No. 3050) where indicated.

Align Aluminum Face Extrusion with Gasket material in front of Base extrusion. Using the palm of your hand, gently tap Aluminum Face extrusion onto the Aluminum base extrusion. When installing, exercise care not to damage face extrusion.

Sheet
3
of 3

Watson Bowman Acme Corp.
95 Pineview Drive Amherst, NY 14228
phone: (716) 691-7566 fax: (716) 691-9239
website: www.wbcorp.com

Installation procedure: CTR 100-600 Contour system

Watson Bowman Acme Corp. reserves the right to amend or withdraw any information contained herein without notice and will not be responsible for any inaccuracy or ambiguity of any information contained herein.