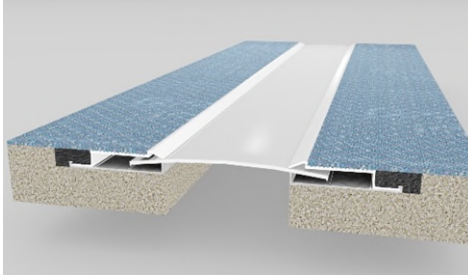
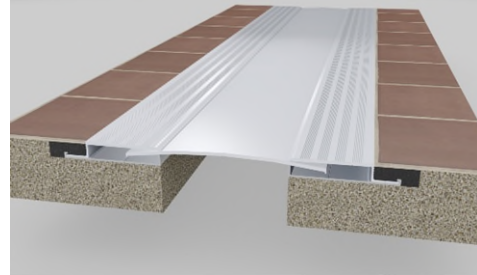


Installation Procedure

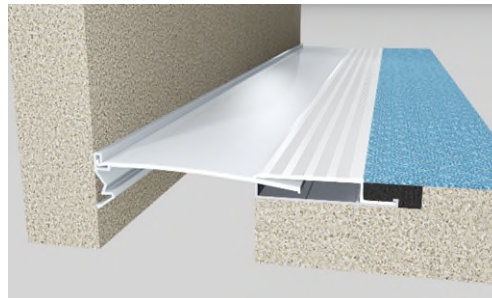
Last Updated: March 28th, 2018



Model CCF – Flush Condition



Model CCF – Flush Condition



Model CCS –
Corner Condition

Wabo®ConvexCover “CCF” & “CCS” Interior Floor Expansion Joint System

The following installation procedure is very important and must be fully understood prior to beginning any work. To ensure proper installation and performance of expansion joint system the following actions must be completed by the installing contractor. Failure to do so will affect product warranty.

- 1) Carefully read and understand installation procedure. Contact WBA's Technical Service Department at (800) 677-4922 for product assistance.
- 2) Inspect all shipments and materials for missing or damaged components and hardware. Contact Customer Service at (800) 677-4922 with WBA's order number and invoice for prompt assistance.
- 3) Inspect substrate or adjacent construction for acceptance before beginning work. Report unacceptable construction to the project manager for scheduled repair work.
- 4) Review WBA shop drawings for project specific detailed information if Engineering services were purchased at time of order.

Information provided herein, including but not limited to, any drawing, design, photograph, graphic, or statement(s) ("Materials") are proprietary and the property of Watson Bowman Acme Corp. ("Company"). Reproduction, translation, or reduction to any electronic medium or machine readable form, in whole or part, is strictly prohibited, except for the express purpose for which it has been furnished, without prior written consent of Company. All Materials contained herein are provided by Company for information purposes only. Company reserves the right to amend or withdraw any information contained in the Materials without notice. All technical or other advice by Company, whether verbal or written, concerning products, or the use of products in specific situations ("Advice") is given by Company and is used at the User's own risk.

Health & Safety

During the installation of any Watson Bowman Acme product, appropriate personal protective items should be worn at all times, including but not limited to the following:

- Proper work clothing
- Safety glasses
- Safety boots
- Gloves
- Hard hat



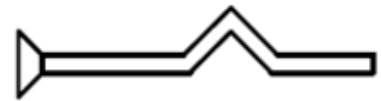
Local rules and regulations regarding safe work environments and health should be followed.

Product Components

The following components are required for the installation of this product:



1/4" Dia. X 1 3/4" LG. Hex head
concrete threaded anchor, P/n:
6523

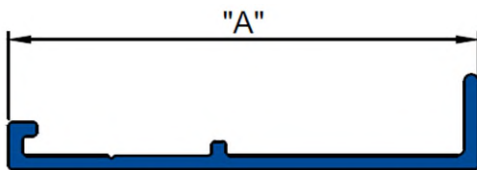


Rawl Driver Anchor #3092,
P/n: **6507**



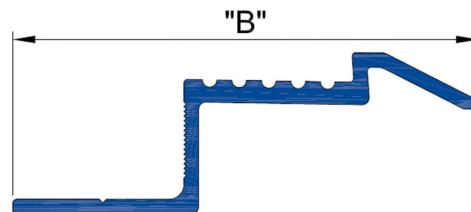
Aluminum wall mount extrusion, P/n: **11206** (Corner Condition)

The following are components that vary in size according to system model:



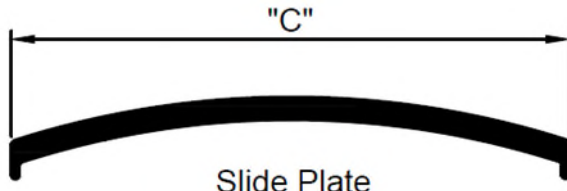
Lower aluminum base profile

Model	"A"	P/N
CCF/CCS-100	2"	11200
CCF/CCS-200	2"	11200
CCF/CCS-300	3 1/4"	11209
CCF/CCS-400	3 1/4"	11209



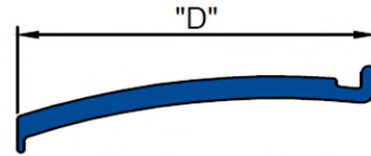
CCF Upper aluminum trim profile

Model	"B"	P/N
CCF-100/200	1 15/16"	11201
CCF-300/400	3 1/4"	11210



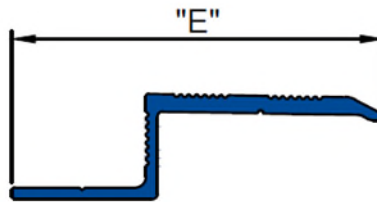
Slide Plate

Model	"C"	P/N
CCF/CCS-100	2 1/4"	11202
CCF/CCS-200	3 1/4"	11203
CCF/CCS-300	6 1/4"	11208
CCF/CCS-400	6 1/4"	11208



Corner Condition Slide Plate

Model	"D"	P/N
CCF/CCS-100C	2 1/4"	11204
CCF/CCS-200C	3 1/4"	11205
CCF/CCS-300C	4 1/16"	11212
CCF/CCS-400C	5 1/16"	11213



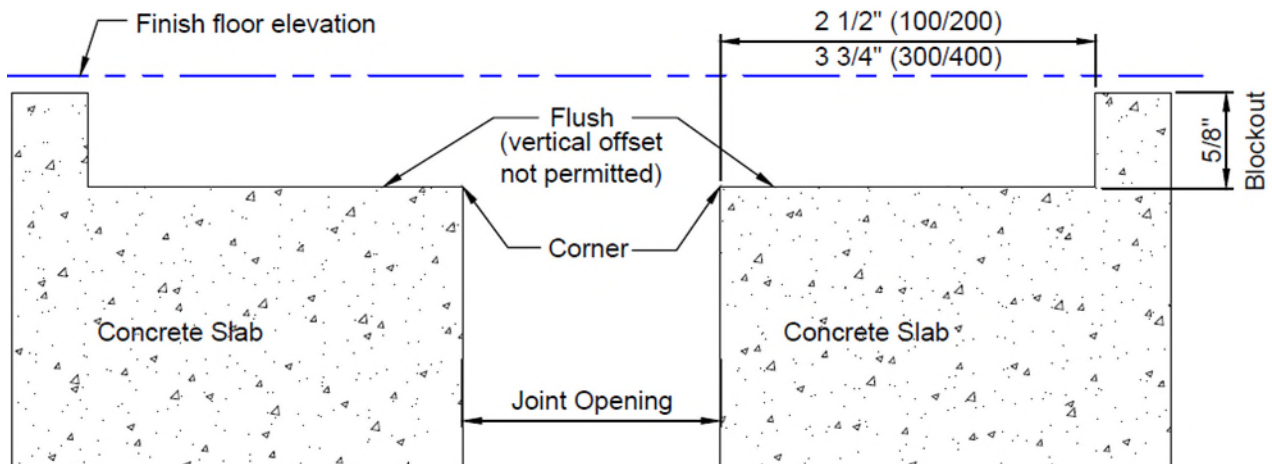
CCS Upper aluminum trim profile

Model	"E"	P/N
CCS-100/200	2"	11207
CCS-300/400	3 1/4"	11211

Installation of Flush Condition

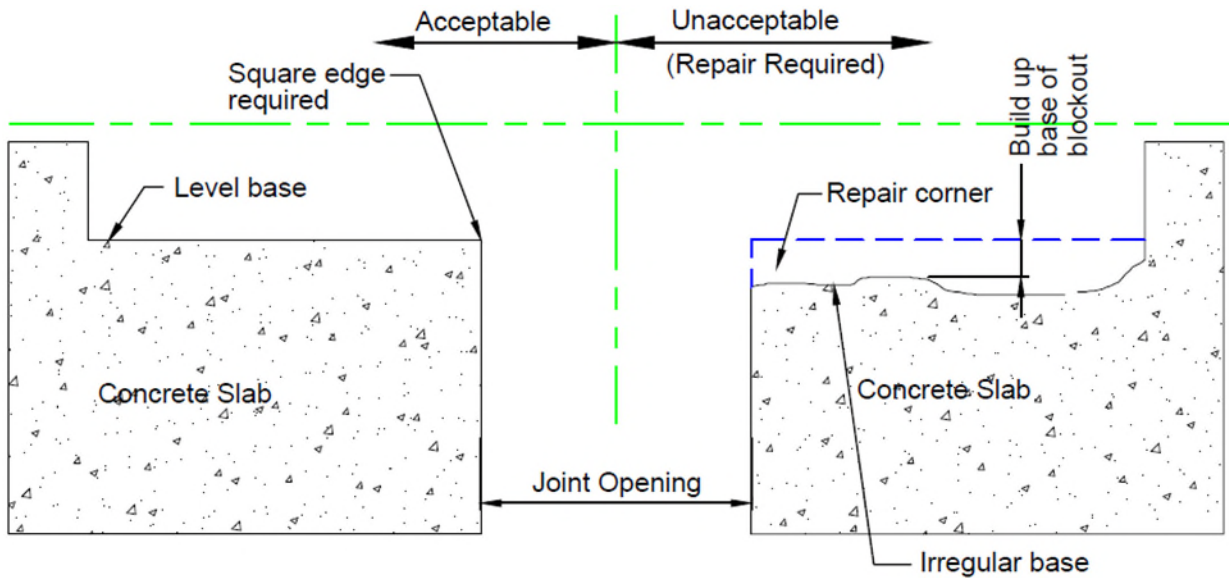
1

Prior to beginning work, installer shall inspect opposing concrete slabs, corners and blockouts for acceptability. For repair (if required), refer to step 2; also, measure joint opening for proper size, as called for on WBA shop drawings or CAD detail.



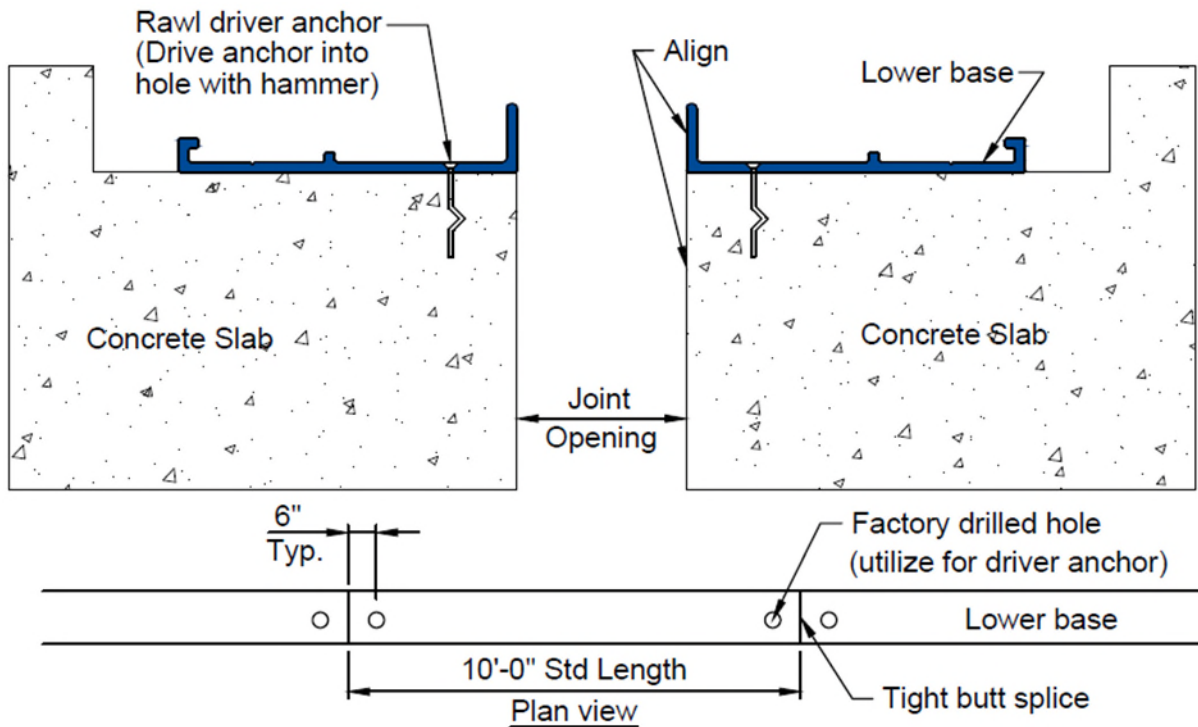
2

Utilizing concrete repair material, repair corner of concrete slab and blockout base, following manufacturer's written instructions.

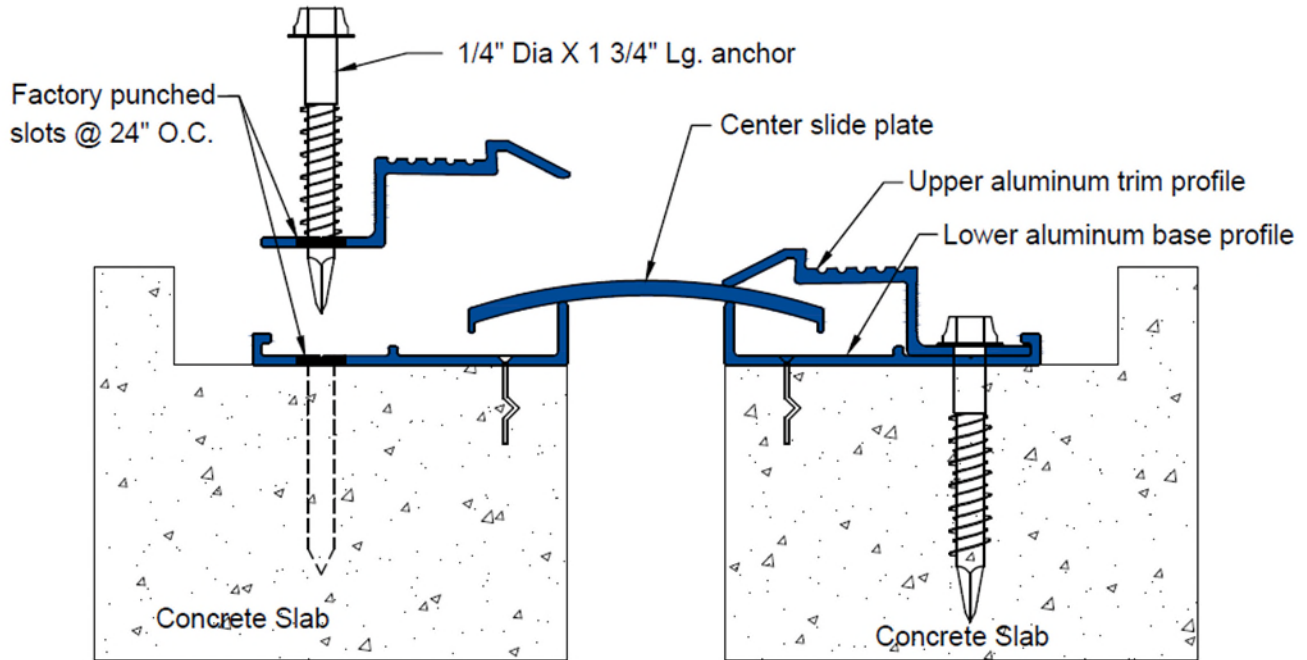


3

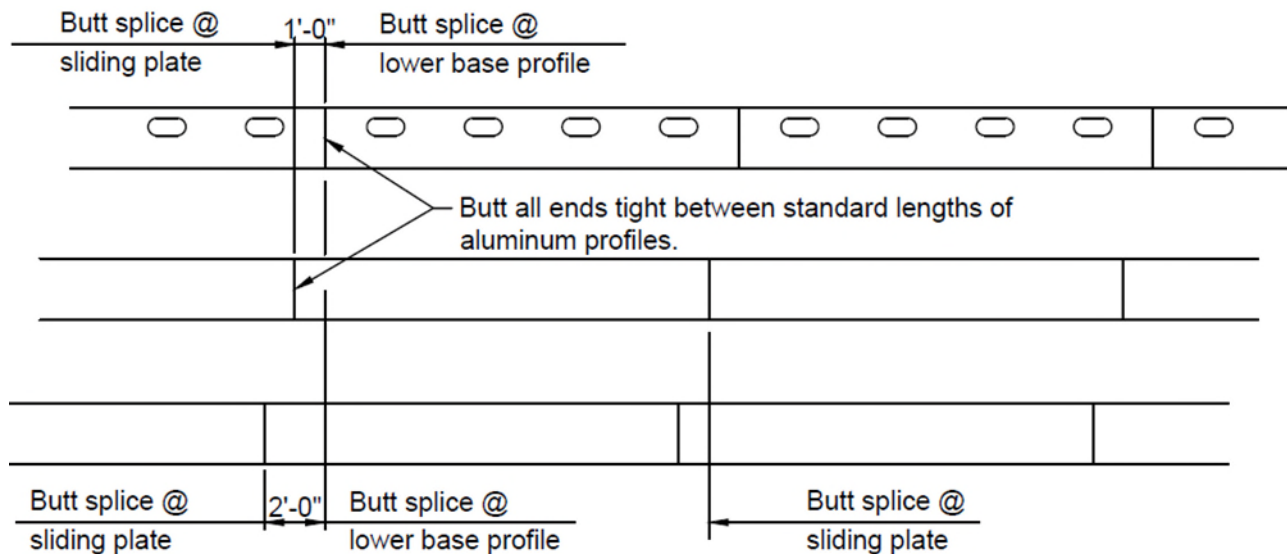
Align lower base profile with edge of opening and secure to concrete slab utilizing driver anchor, location indicated below.



- 4** Place and center slide plate across opening. Secure its position by installing upper trim profile as shown. Review step 5 prior to installing concrete anchors for proper splicing procedures of aluminum components. **Note:** drill holes to proper depth for concrete anchors, utilizing 3/16" diameter tapcon carbide masonry drill bits.

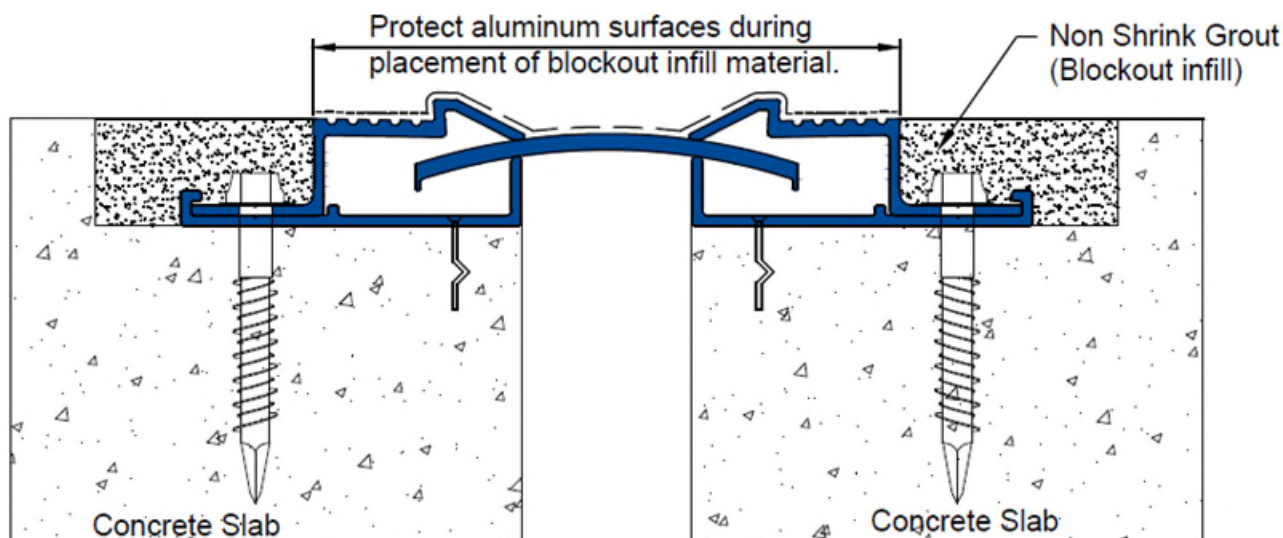


- 5** Stagger all splices, in accordance with detail illustrated below, to provide a stronger assembly and durable installation.



6

Install non-shrink grout into blockout after aluminum profiles and concrete anchors have been installed.

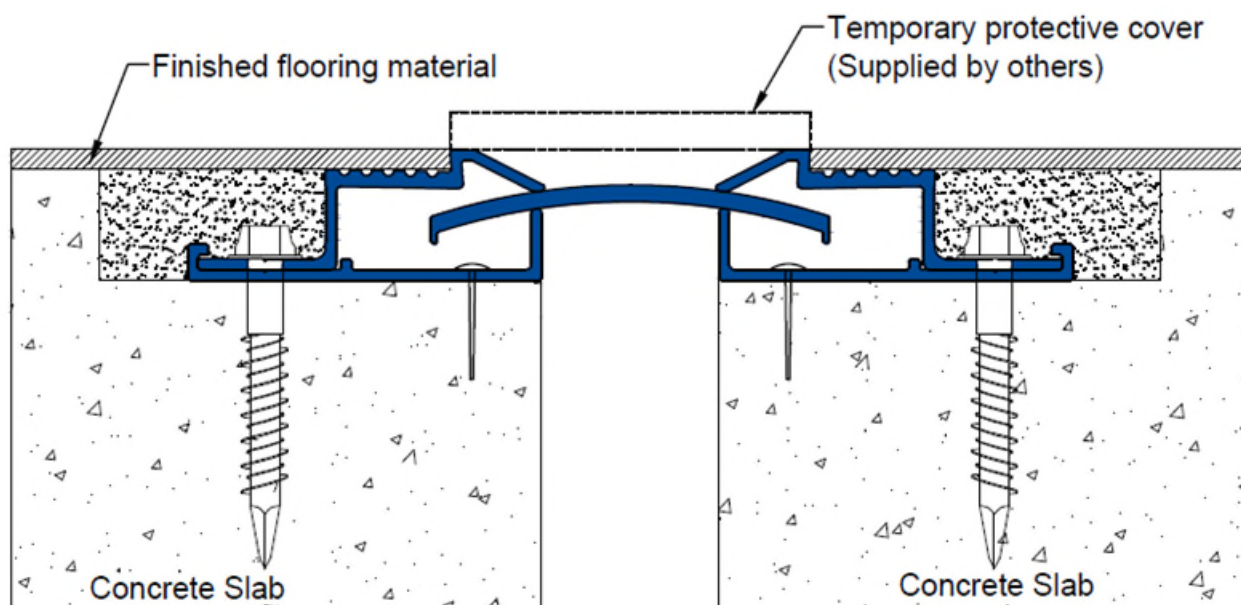


7

Install finish flooring material.

Note: Installing contractor shall cover and protect finished expansion joint assembly from damage during installation of finished floor materials. The expansion joint assembly is a finished product.

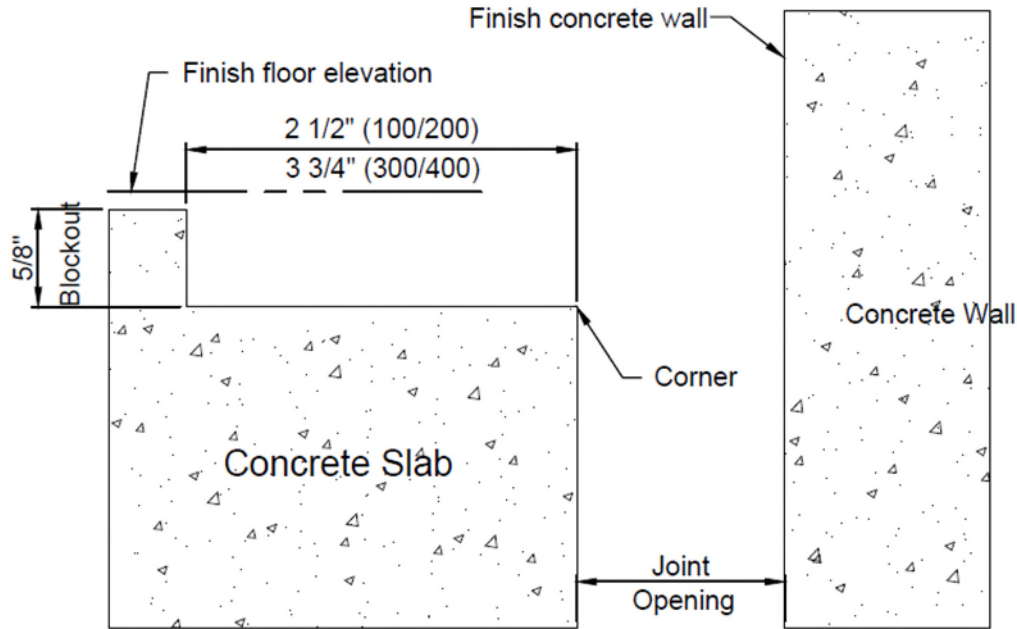
Damage to expansion joint finishes and components are excluded from warranty.



Installation of Corner Condition

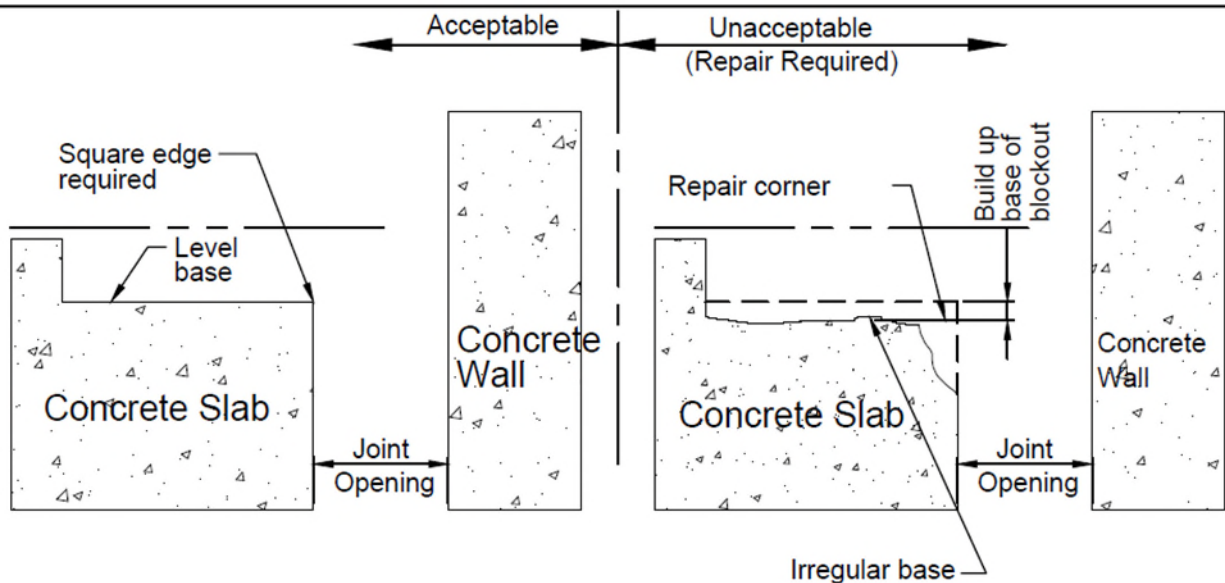
1

Prior to beginning work, installer shall inspect concrete slab corner and blockout for acceptability. For repair (if required), refer to step 2; also, measure joint opening for proper size as called for on WBA shop drawings or CAD detail.



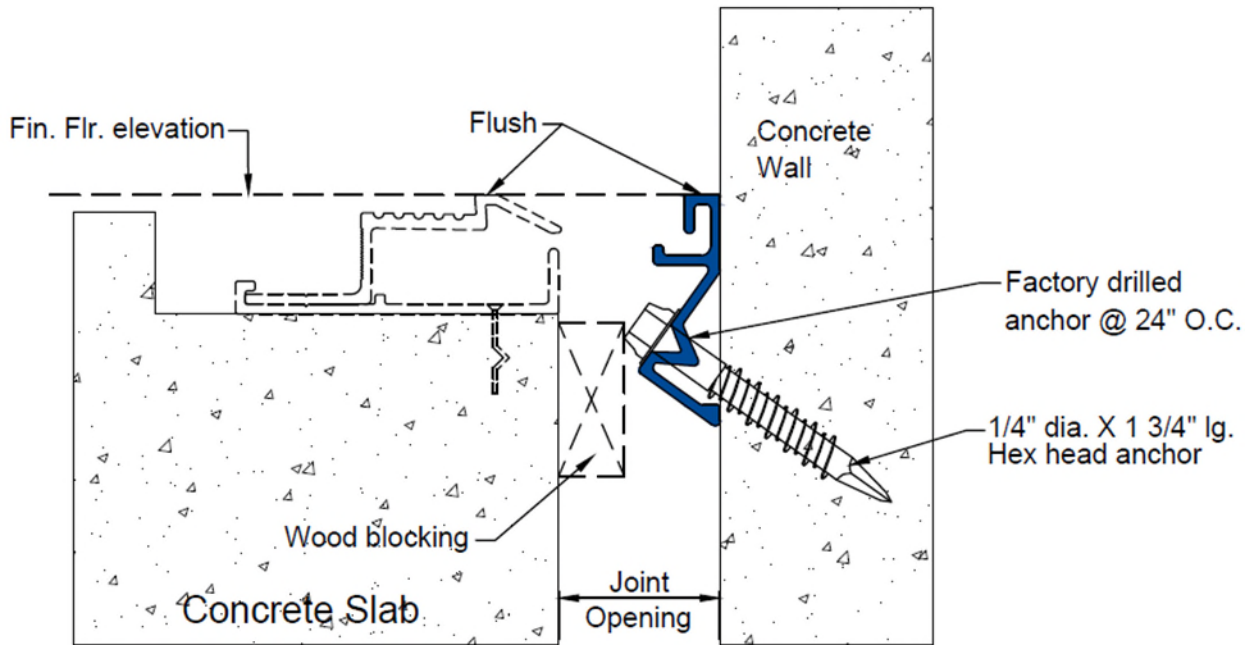
2

Utilizing concrete repair material, repair corner of concrete slab and blockout base following manufacturer's written instructions.



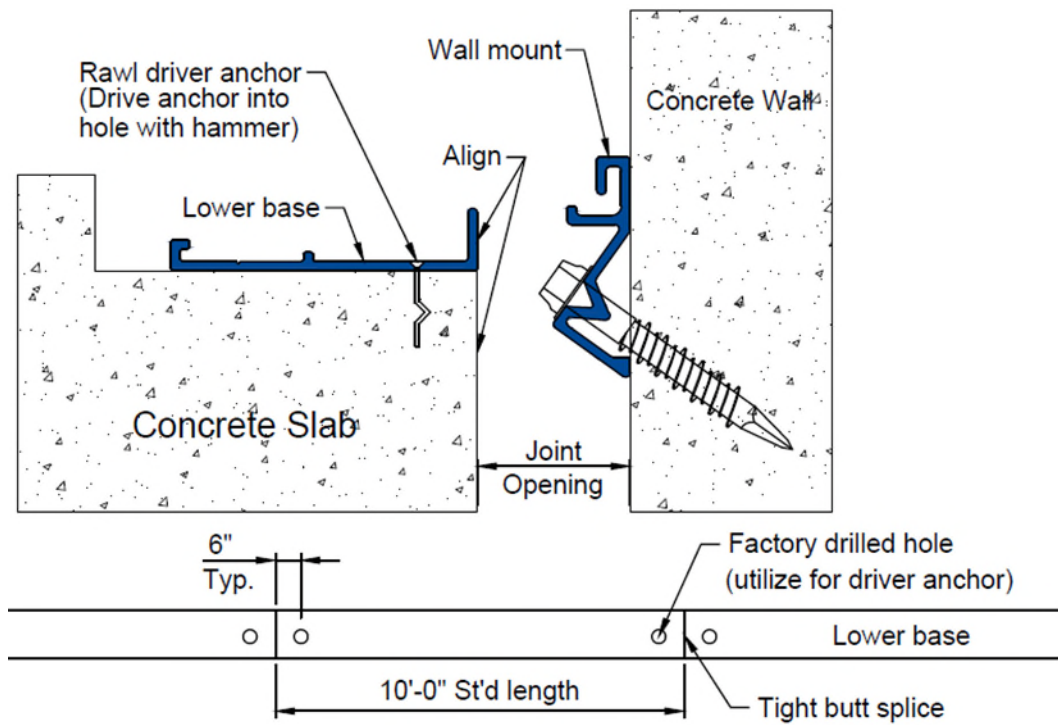
3

Position and set aluminum wall mount extrusion flush with finish floor elevation. Secure position with wood blocking if necessary. Anchor extrusion to wall, utilizing manufacturer's recommended anchor.

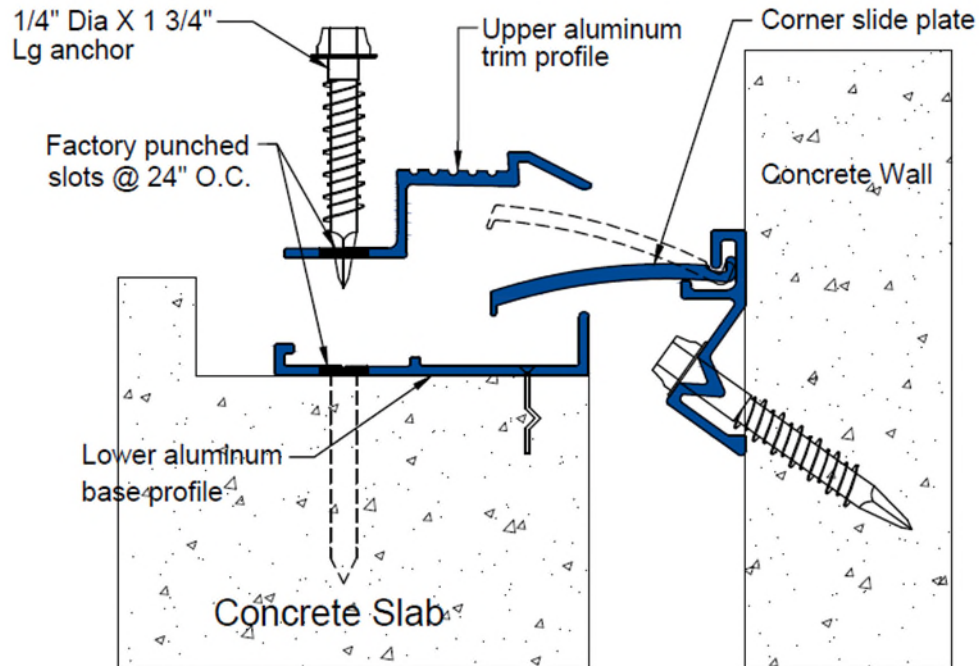


4

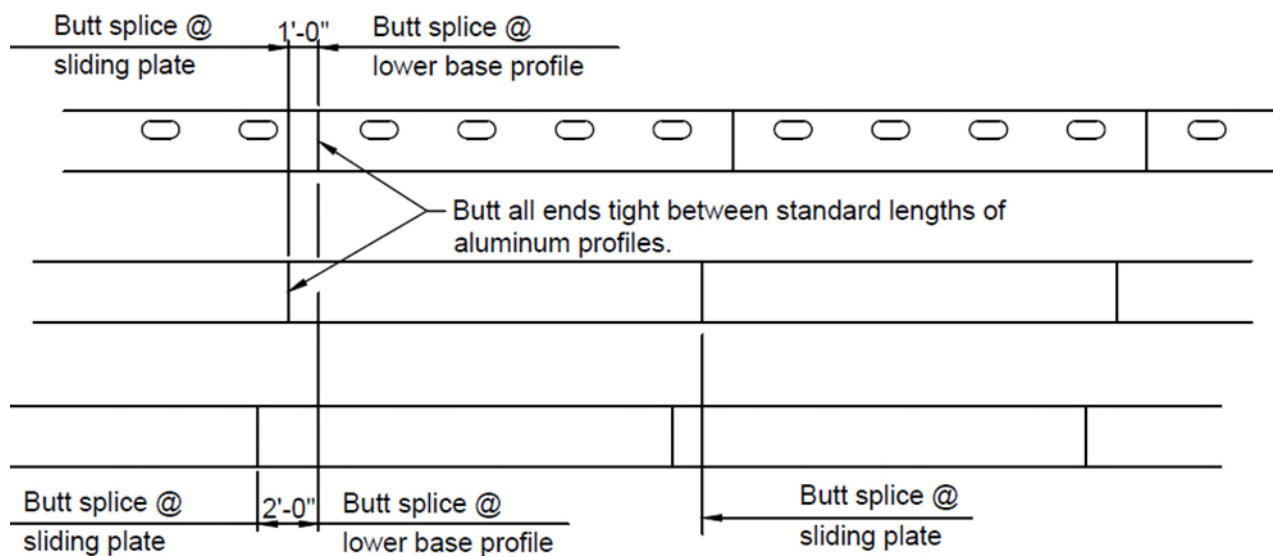
Align lower base profile with edge of opening and secure to concrete slab utilizing driver anchor, location indicated below.



- 5** Place and center slide plate across opening. Secure its position by installing upper trim profile as shown. Review step 6 prior to installing concrete anchors for proper splicing procedures of aluminum components. **Note:** drill holes to proper depth for concrete anchors utilizing 3/16" diameter tapcon carbide masonry drill bits.

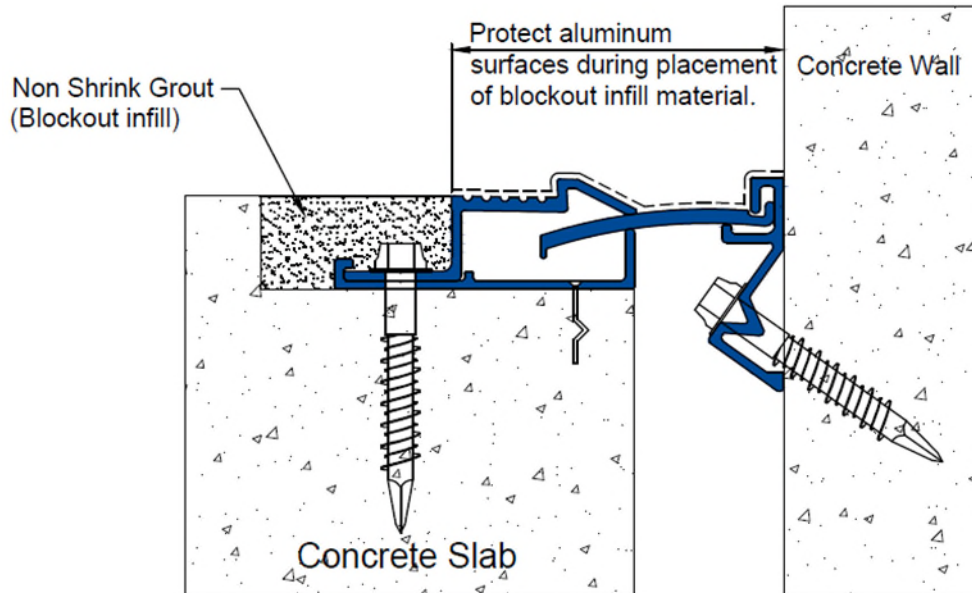


- 6** Stagger all splices in accordance with detail illustrated below to provide a stronger assembly and durable installation.



7

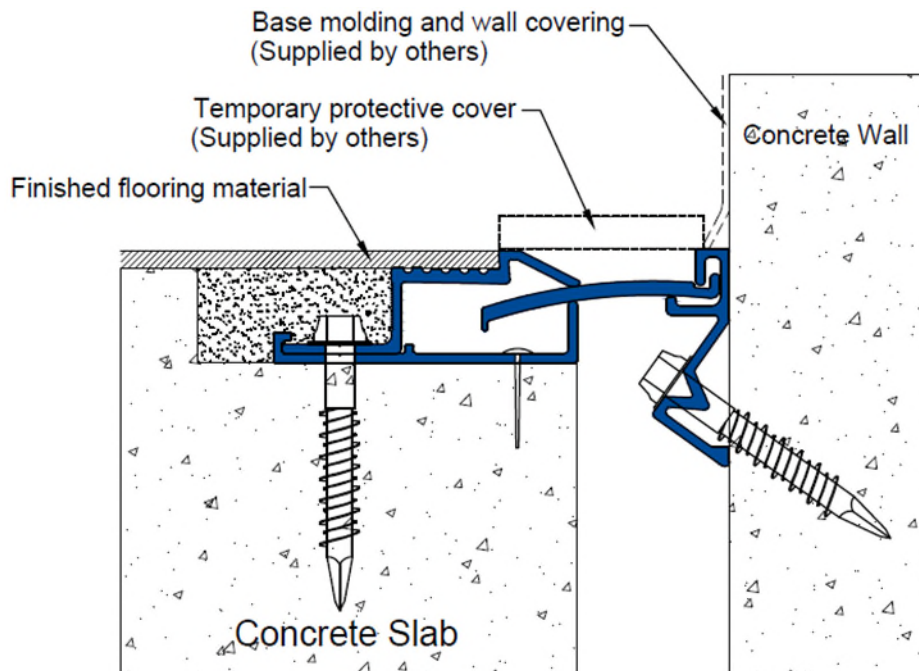
Install non-shrink Grout into blockout after aluminum profiles and concrete anchors have been installed.



8

Install finish flooring material.

Note: Installing contractor shall cover and protect finished expansion joint assembly from damage during installation of finished floor materials. The expansion joint assembly is a finished product. Damage to expansion joint finishes and components are excluded from warranty.



Follow us on social media for industry news, new product announcements & more:

