

# Installation Procedure

Last Updated: February 2024



## Wabo®Crete II

Elastomeric Concrete

The following installation procedure is very important and must be fully understood prior to beginning any work. To ensure proper installation and performance of expansion joint system the following actions must be completed by the installing contractor. Failure to do so will affect product warranty.

- 1) Carefully read and understand installation procedure. Contact WBA's Technical Service Department at (800) 677-4922 for product assistance.
- 2) Inspect all shipments and materials for missing or damaged components and hardware. Contact Customer Service at (800) 677-4922 with WBA's order number and invoice for prompt assistance.

Information provided herein, including but not limited to, any drawing, design, photograph, graphic, or statement(s) ("Materials") are proprietary and the property of Watson Bowman Acme Corp. ("Company"). Reproduction, translation, or reduction to any electronic medium or machine readable form, in whole or part, is strictly prohibited, except for the express purpose for which it has been furnished, without prior written consent of Company. All Materials contained herein are provided by Company for information purposes only. Company reserves the right to amend or withdraw any information contained in the Materials without notice. All technical or other advice by Company, whether verbal or written, concerning products, or the use of products in specific situations ("Advice") is given by Company and is used at the User's own risk.

- 3) Inspect substrate or adjacent construction for acceptance before beginning work. Report unacceptable construction to the project manager for scheduled repair work.
- 4) Review WBA shop drawings for project specific detailed information if Engineering services were purchased at time of order.

## Health & Safety

---

During the installation of any Watson Bowman Acme product, appropriate personal protective items should be worn at all times, including but not limited to the following:

- Proper work clothing
- Safety glasses
- Safety boots
- Gloves
- Hard hat



Local rules and regulations regarding safe work environments and health should be followed.

## Pre-Installation Notes

---

**Important Note:** Do not install Wabo®Crete II if concrete is wet or potential weather creates wet installation conditions. Do not install if concrete temperature or ambient air temperature is below 40°F. Temperature shall be 40 degrees and rising. Contact WBA technical representative for further guidance.

**General:** The work shall consist of furnishing and installing Wabo®Crete II elastomeric concrete in accordance with the plans and the requirements of the specifications. Placement of the Wabo®Crete II elastomeric concrete shall consist of proper surface preparations, material and application of materials.

**Blockout Preparation for Wabo®Crete II Elastomeric Concrete:** The blockout shall be constructed to the dimensions on the drawings. The concrete substrate must be clean (free of dirt, coatings, rust, grease, oil and other contaminants), sound and durable. New concrete must be cured (minimum of 14 days) and all laitance removed. Suitable preparation methods include sandblasting and grinding.

Steel surfaces must be abrasive blasted SP-10 near-white, immediately prior to installation. This is a requirement in new or existing construction. All oxidation must be removed and “white steel” revealed. Where abrasive blasting is not permitted, steel surfaces will be aggressively disc-ground to roughen and abrade the surface to achieve the “white steel” condition. Galvanized steel clean with Xylene or wire wheel brush.

Durable Concrete- sound and durable concrete should have a cap pull-off strength that meets or exceeds ACI 503R, Appendix A.

Unsound Concrete – Loose, contaminated, weak, spalled, deteriorated and/or delaminated concrete must be removed to sound concrete and repaired prior to placement of Wabo®Crete II elastomeric concrete. Repairs must be keyed into structural concrete. Slanted shear bond lines prohibited.



Watson Bowman Acme  
95 Pineview Drive  
Amherst, NY 14228  
Phone: 716-691-7566  
Fax: 716-691-9239  
watsonbowmanacme.com



SIKA CORPORATION  
201 Polito Avenue  
Lyndhurst, NJ 07071 USA  
Phone: +1-800-933-7452  
Fax: +1-2019336225  
www.usa.sika.com

Cracks/Spalls – prior to placement of the Wabo®Crete II elastomeric concrete, repair cracks/spalls according to methods outlined in ACI Guideline 546R-14 and/or ICRI Guideline 03734.

**Yield** = 0.6 cubic feet per unit.

## Installation – Wabo®Bonding Agent

**1** Wabo®Bonding Agent must be used as a primer on the properly prepared concrete before beginning the installation of the Wabo®Crete II elastomeric concrete. Mix Part B (hardener) separately in its individual container. Combine Part A and Part B, 1:1 by volume in a separate clean container. Mix thoroughly with an electric drill and jiffy paddle or helix paint mixer for approximately 2 minutes or until color consistency is developed.

**2** Brush-apply a thin layer of the primer to the concrete surface and immediately begin the installation of the Wabo®Crete II elastomeric concrete. **DO NOT** allow the primer (Wabo®Bonding Agent) to cure, as this is a wet-on-wet application. Concrete should have a damp or wet appearance, not puddles. For steel blockouts or blockouts with rebar – **DO NOT** apply Wabo®Bonding Agent to the steel or rebar.

**2A** **Note:** Cure time is dependent on temperature. Approximate time until material becomes unworkable is 30-40 minutes. If product cures before Wabo®Crete II installation, concrete surfaces must be re-prepped.

## Installation – Wabo®Crete II

**1** Thoroughly scrape Part B (elastomeric concrete into a clean 5-gallon container. Begin mixing.

**2** Add Part A (elastomeric activator) and mix both components with a power mixer equipped with “egg-beater” style mixing paddle for 30 seconds and until well blended. Add Wabo®Non-Flow Additive in accordance with WBA technical recommendations if necessary.

**3** Add the Part C (elastomeric aggregate) component to the liquid material and mix until all aggregate is coated (approximately 1 minute). Total mix time should not exceed 2 ½ minutes.

This mix can be poured into the properly prepared blockout. The material will flow and self-level.

**Note:** Total mixing time should not exceed 2 minutes, as this will inhibit working time/pot life, which is approximately 10 minutes depending on temperature.



Watson Bowman Acme  
95 Pineview Drive  
Amherst, NY 14228  
Phone: 716-691-7566  
Fax: 716-691-9239  
watsonbowmanacme.com



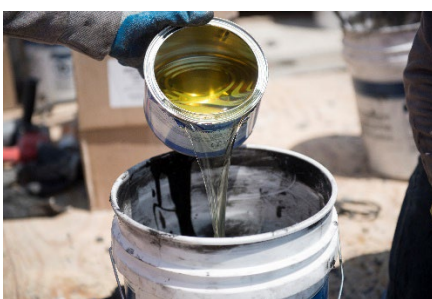
SIKA CORPORATION  
201 Polito Avenue  
Lyndhurst, NJ 07071 USA  
Phone: +1-800-933-7452  
Fax: +1-2019336225  
www.usa.sika.com

4

Blasting abrasive such as “Black Beauty” (by Harsco) can be broadcast to refusal onto the surface of installed Wabo®Crete II to inhibit skidding. Wait approximately 2-4 minutes after installation to broadcast the abrasive.

5

Clean tools with thinner or a solvent such as Xylene. **DO NOT** use denatured alcohol or acetone as this may cause an adverse reaction with the Wabo®Crete II.



## Additional Notes

### Placement of Wabo®Crete II Elastomeric Concrete

The final blend of Wabo®Crete II elastomeric concrete is poured out of the mixing bucket and into the blockout area. Wabo®Crete II is an ambient cure material. Cure times are, therefore, temperature dependent. Suggested cure times are listed below:

Cure Time (Open to Traffic)	70-90 °F	1- 1 ½ hours
	50-70 °F	1 ½ - 2 hours
	40-50 °F	2 –3 hours

Pre-condition materials to 65-70°F for 24 hours prior to installation to achieve optimal working times.

*Follow us on social media for industry news, new product announcements & more:*



Watson Bowman Acme  
95 Pineview Drive  
Amherst, NY 14228  
Phone: 716-691-7566  
Fax: 716-691-9239  
watsonbowmanacme.com



SIKA CORPORATION  
201 Polito Avenue  
Lyndhurst, NJ 07071 USA  
Phone: +1-800-933-7452  
Fax: +1-2019336225  
www.usa.sika.com