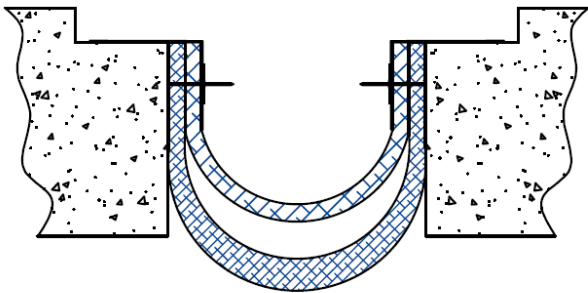
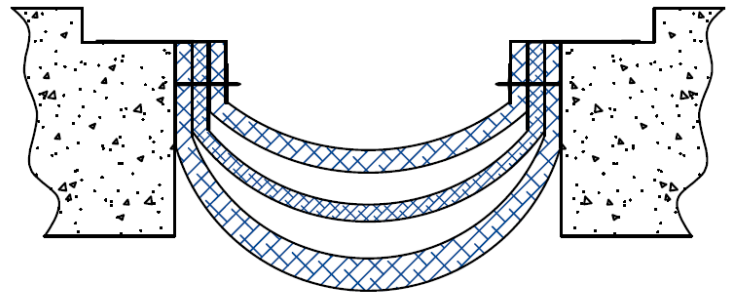


Installation Procedure

Last Updated: March 2, 2021



2 Layers
4" thru 6"



3 Layers
8" thru 26"

Wabo® FlameGuard II – HFG & HFG-C 4"-26"

Fire Barrier Systems for Expansion Joints

The following installation procedure is very important and must be fully understood prior to beginning any work. To ensure proper installation and performance of expansion joint system the following actions must be completed by the installing contractor. **Failure to do so will affect product warranty.**

- 1) Carefully read and understand installation procedure. Contact WBA's Technical Service Department at (800) 677-4922 for product assistance.
- 2) Inspect all shipments and materials for missing or damaged components and hardware. Contact Customer Service at (800) 677-4922 with WBA's order number and invoice for prompt assistance.
- 3) Inspect substrate or adjacent construction for acceptance before beginning work. Report unacceptable construction to the project manager for scheduled repair work.
- 4) Review WBA shop drawings for project specific detailed information if Engineering services were purchased at time of order.

Information provided herein, including but not limited to, any drawing, design, photograph, graphic, or statement(s) ("Materials") are proprietary and the property of Watson Bowman Acme ("Company"). Reproduction, translation, or reduction to any electronic medium or machine-readable form, in whole or part, is strictly prohibited, except for the express purpose for which it has been furnished, without prior written consent of Company. All Materials contained herein are provided by Company for information purposes only. Company reserves the right to amend or withdraw any information contained in the Materials without notice. All technical or other advice by Company, whether verbal or written, concerning products, or the use of products in specific situations ("Advice") is given by Company and is used at the User's own risk.

Health & Safety

During the installation of any Watson Bowman Acme product, appropriate personal protective items should be worn at all times, including but not limited to the following:

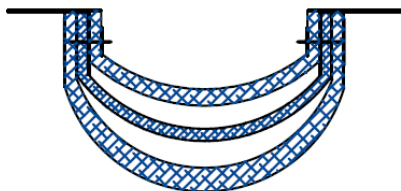
- Proper work clothing
- Safety glasses
- Safety boots
- Gloves
- Hard hat



Local rules and regulations regarding safe work environments and health should be followed.

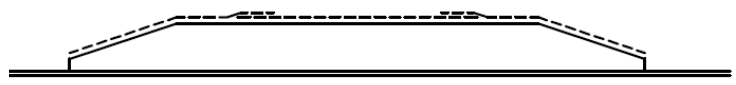
Product Components

The following are standard components for the floor condition:



Flameguard II 8" thru 26" Floor Assembly
(For size and p/n refer to chart)

Model #	Part # 1 hr	Part # 2 hr
HFG-2602		HFG2602
HFG-2402		HFG2402
HFG-2202		HFG2202
HFG-2002		HFG2002
HFG-1802		HFG1802
HFG-1602		HFG1602
HFG-1402		HFG1402
HFG-1201,1202	HFG1201	HFG1202
HFG-1001,1002	HFG1001	HFG1002
HFG-801,802	HFG801	HFG802

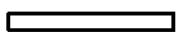


Splice Transition
(For size and p/n refer to chart)

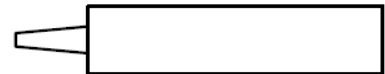
Model #	Part #
HFG-2602	3218
HFG-2402	3217
HFG-2202	3216
HFG-2002	3215
HFG-1802	3214
HFG-1602	3213
HFG-1402	3212
HFG-1201,1202	3211
HFG-1001,1002	3211
HFG-801,802	3208
HFG-601,602	3206
HFG-401,402	3204



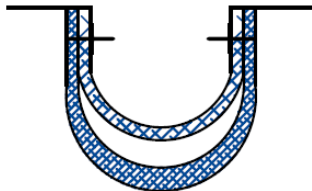
1/4" X 2-1/4" Concrete
Sleeve Anchor
Part Number - #6913



1/4" Flat Washer
Part Number - #7473

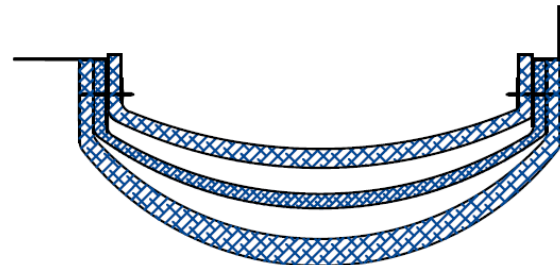


Hilti CFS-S SIL GG Sealant
Part Number - #2861

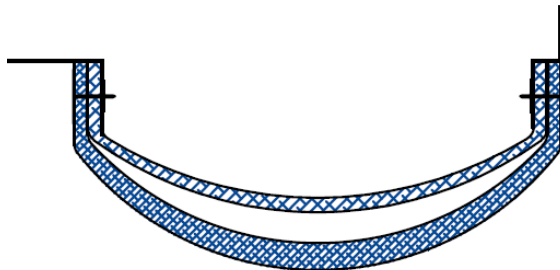


Flameguard II 4" thru 6" Floor Assembly
(For size and p/n refer to chart)

Model #	Part # 1 hr	Part # 2 hr
HFG-601,602	HFG601	HFG602
HFG-401,402	HFG401	HFG402



Flameguard II 8" thru 12" Corner Assembly
(For size and p/n refer to chart)



Flameguard II 4" thru 6" Corner Assembly
(For size and p/n refer to chart)

Model #	Part # 1 hr	Part # 2 hr
HFG-601AB,602AB	HFG601AB	HFG602AB
HFG-401AB,402AB	HFG401AB	HFG402AB

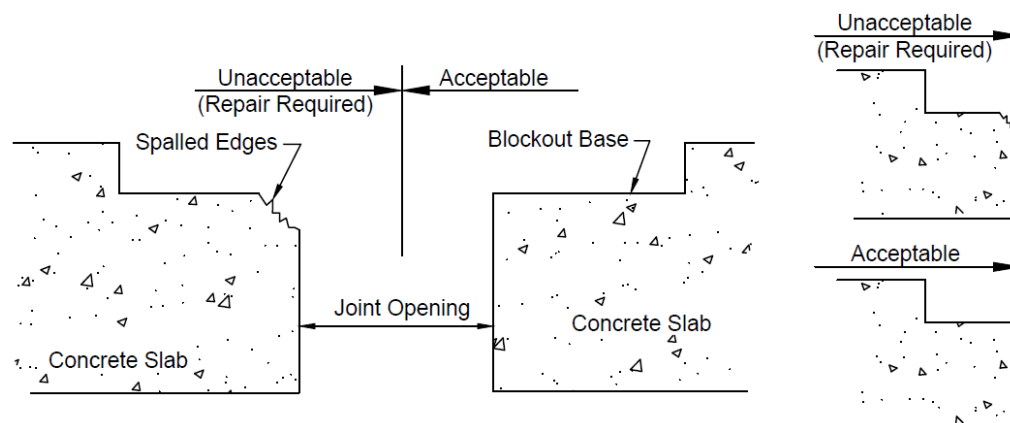
Model #	Part # 1 hr	Part # 2 hr
HFG-2602AB		HFG2602AB
HFG-2402AB		HFG2402AB
HFG-2202AB		HFG2202AB
HFG-2002AB		HFG2002AB
HFG-1802AB		HFG1802AB
HFG-1602AB		HFG1602AB
HFG-1402AB		HFG1402AB
HFG-1201AB,1202AB	HFG1201AB	HFG1202AB
HFG-1001AB,1002AB	HFG1001AB	HFG1002AB
HFG-801AB,802AB	HFG801AB	HFG802AB

Installation

1

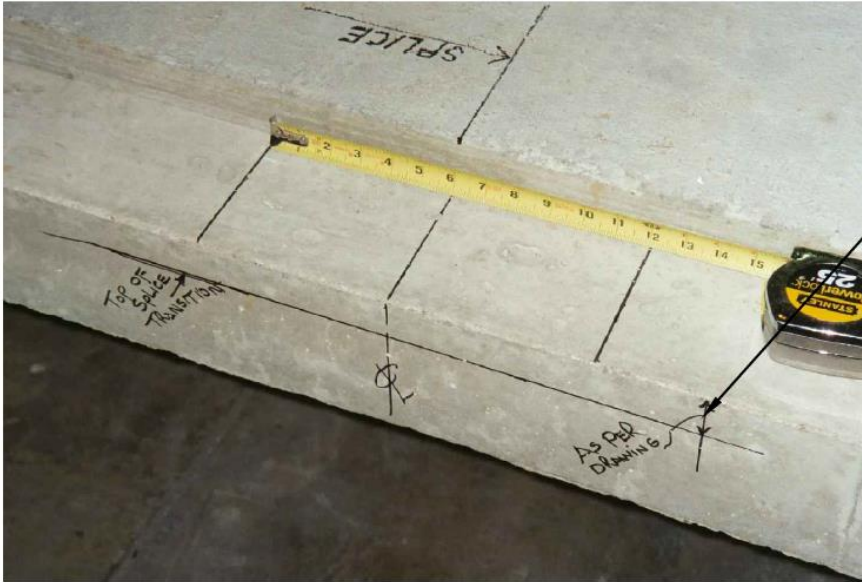
Prepare concrete blockout for installation of fire barrier. Deficiencies in blockout base and spalled edges must be corrected prior to beginning work.

Note: Contractor to repair any spalled edges with a Repair Material approved by the Buildings Structural Engineer.



2

Mark fire barrier splice locations and outline edges of splice transition as shown.

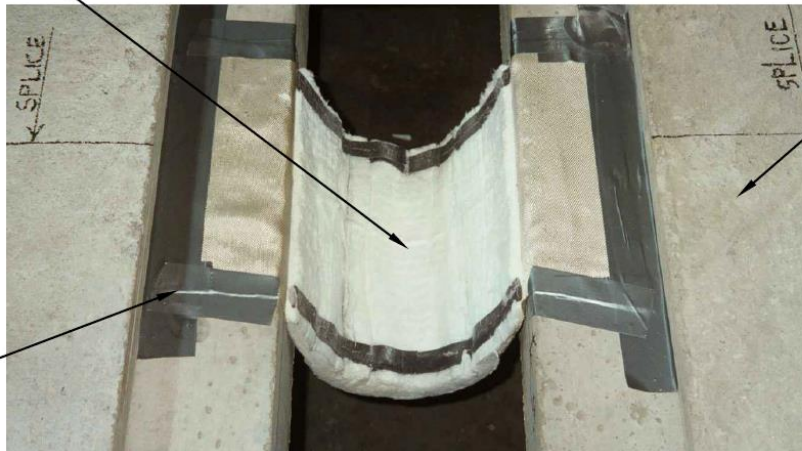


3

After splice locations have been determined, secure splice transition utilizing duct tape to concrete slab as shown in photo.

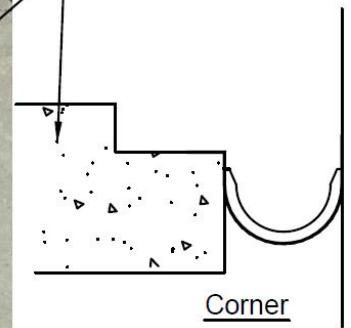
Splice Transition

Duct Tape
(By others)



Concrete Slab

Corner

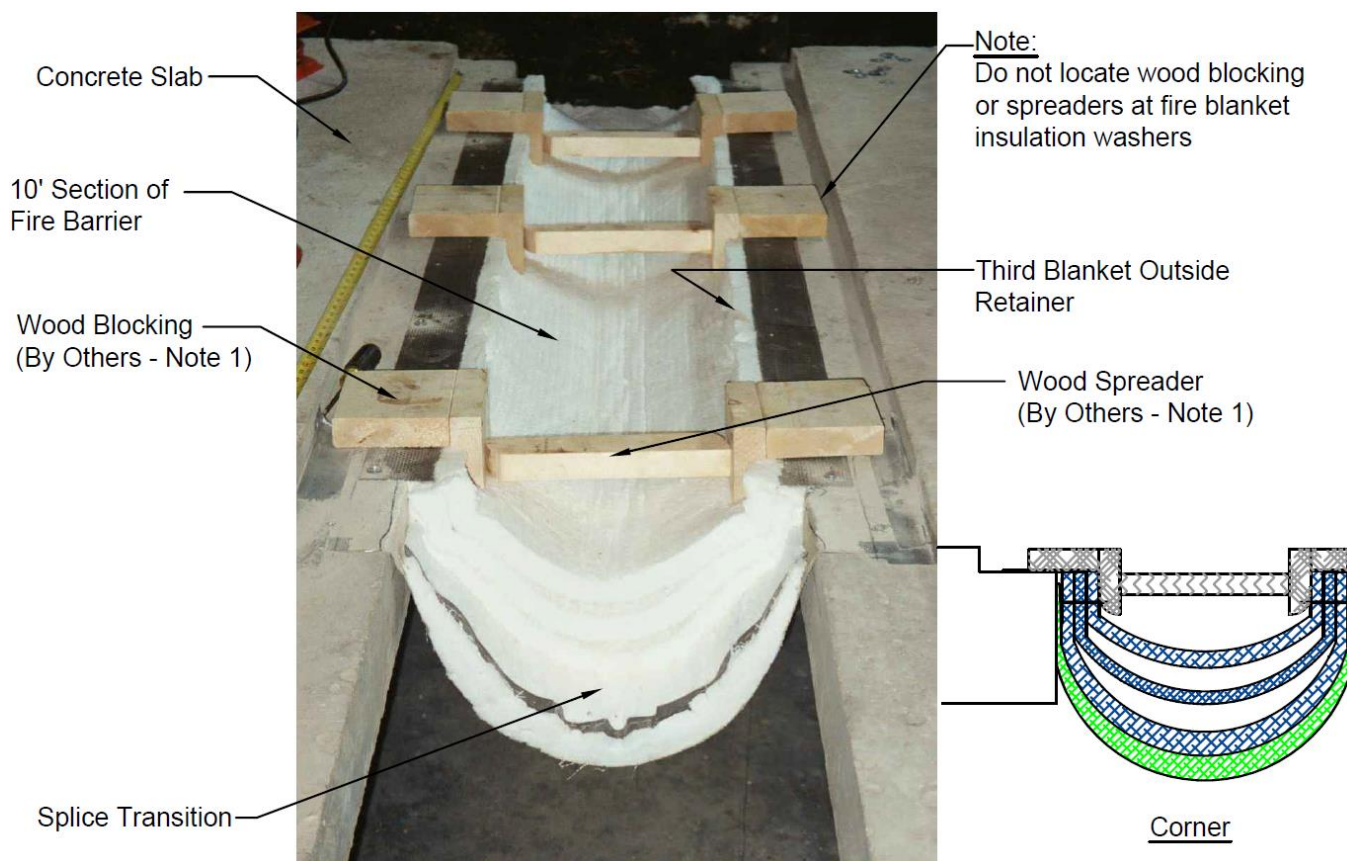


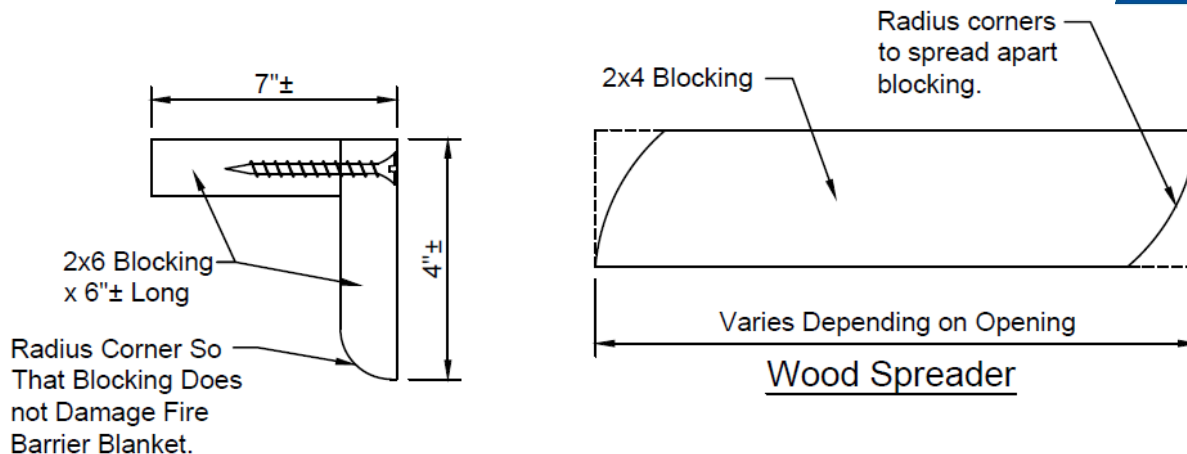
4

Insert 10' section of fire barrier into opening. Ensure that end of fire barrier is located on centerline of Splice Transition. Once fire barrier is inserted into opening, mount wood blocking insert and wedge wood spreader to expend fire barrier to its correct position.

Notes:

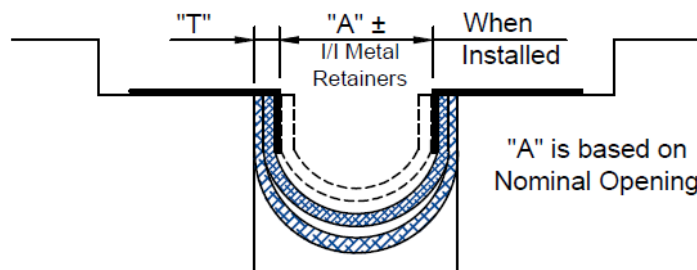
1. Wood blocking and spreader is required to ensure that fire barrier is installed tight to adjacent concrete construction.





Wood Blocking

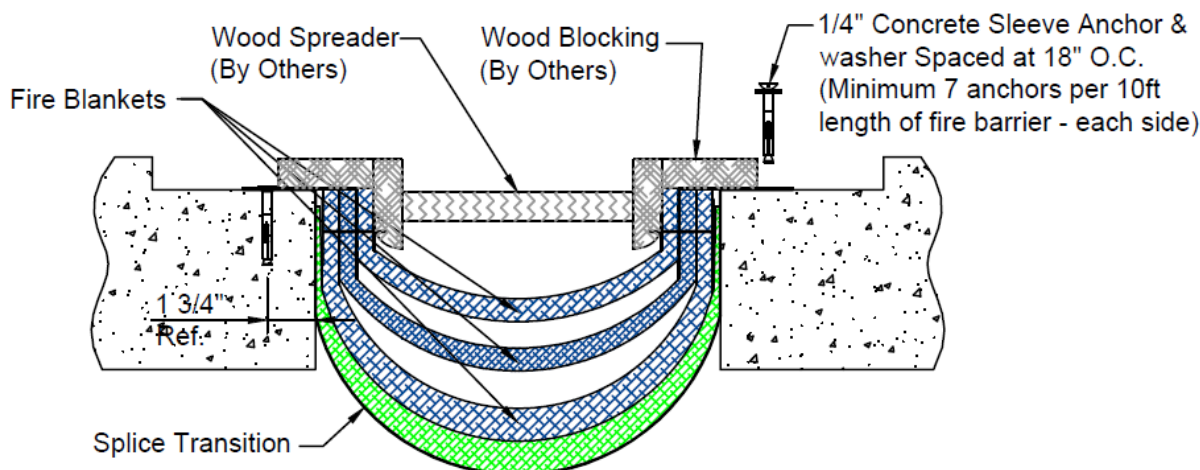
Required only when system incorporates third Fire Barrier Blanket outside of metal retainer as shown in photo above. Not required if third blanket is not used.



Model	"A"	"T"
HFG-1201,1201AB,1202,1202AB	10"	1"
HFG-1001,1001AB,1002,1002AB	8"	1"
HFG-801,801AB,802,802AB	6"	1"
HFG-601,601AB,602,602AB	4"	1"
HFG-401,401AB,402,402AB	2"	1"

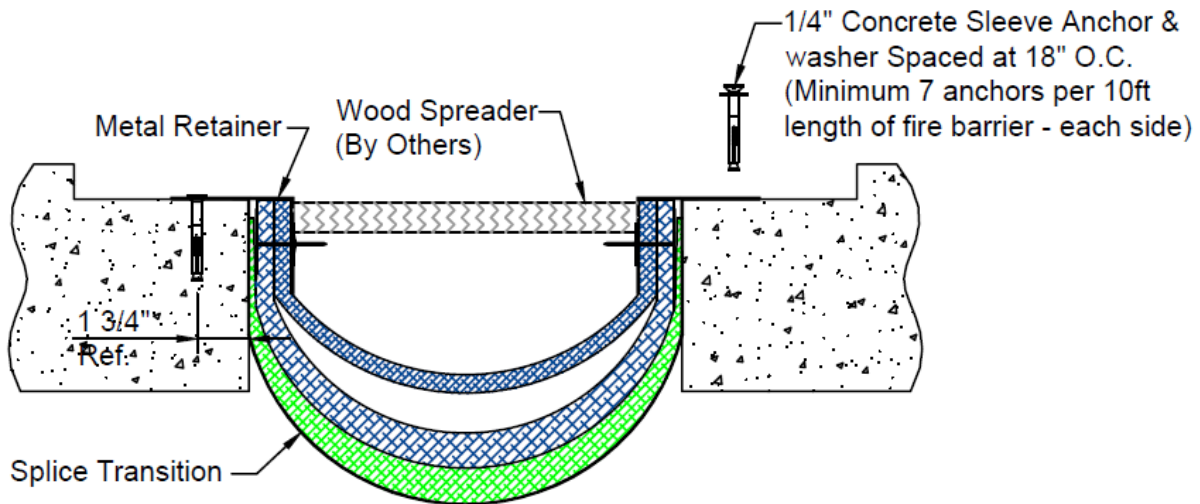
5A

Once fire barrier has been blocked open, mark and drill holes for 1/4" x 2 1/4" lg concrete sleeve anchors spaced at 18" O.C. Once the holes have been drilled, remove powder dust, exercising care not to get debris into fire blanket assembly. Install concrete sleeve anchor with washers.



5B

Once fire barrier has been blocked open, mark and drill holes for 1/4" x 2 1/4" lg concrete sleeve anchors spaced at 18" O.C. Once the holes have been drilled, remove powder dust, exercising care not to get debris into fire blanket assembly. Install concrete sleeve anchor with washers.



6

After the first section of fire barrier has been installed, apply CFS-S SIL GG sealant (#2861) to all blanket layers of the fire blanket assembly (Except: splice transition).



7

Repeat Step 4 with next section of fire barrier. Install next section, ensuring that there are no gaps at the splice location between blankets, as shown above.

Note:

To remove small gaps between sections of fire barrier, gently tap opposite ends of metal retainers with a hammer and wood blocking to slowly move the fire barrier forward, compressing the CFS-S SIL GG sealant (#2861) at the splice line. Exercise care not to damage fire barrier blanket where wood blocking is applied.

Splice Line
(No Gaps)

**8**

After the next fire barrier section is in place, repeat step 5A or 5B.

9

With installation complete, temporarily cover system to ensure debris does not enter fire barrier cavity. It shall be the installer's responsibility to protect completed fire barrier installations. Damaged fire barriers will be replaced at installer's expense.

Follow us on social media for industry news, new product announcements & more:

