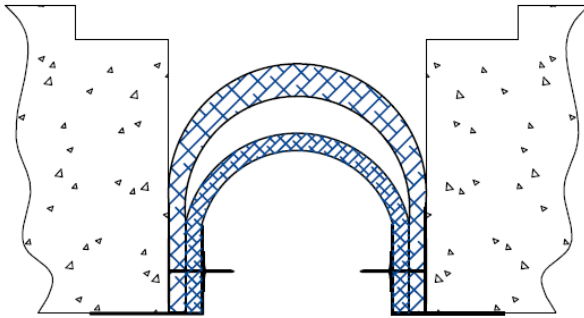
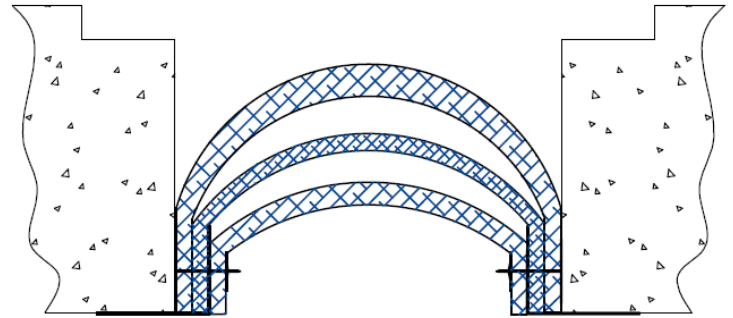


Installation Procedure

Last Updated: March 2, 2021



2 Layers
4" thru 6"



3 Layers
8" thru 12"

Wabo® FlameGuard II – UFG & UFG-C 4"-12"

Fire Barrier Systems for Expansion Joints

The following installation procedure is very important and must be fully understood prior to beginning any work. To ensure proper installation and performance of expansion joint system the following actions must be completed by the installing contractor. **Failure to do so will affect product warranty.**

- 1) Carefully read and understand installation procedure. Contact WBA's Technical Service Department at (800) 677-4922 for product assistance.
- 2) Inspect all shipments and materials for missing or damaged components and hardware. Contact Customer Service at (800) 677-4922 with WBA's order number and invoice for prompt assistance.
- 3) Inspect substrate or adjacent construction for acceptance before beginning work. Report unacceptable construction to the project manager for scheduled repair work.
- 4) Review WBA shop drawings for project specific detailed information if Engineering services were purchased at time of order.

Information provided herein, including but not limited to, any drawing, design, photograph, graphic, or statement(s) ("Materials") are proprietary and the property of Watson Bowman Acme ("Company"). Reproduction, translation, or reduction to any electronic medium or machine-readable form, in whole or part, is strictly prohibited, except for the express purpose for which it has been furnished, without prior written consent of Company. All Materials contained herein are provided by Company for information purposes only. Company reserves the right to amend or withdraw any information contained in the Materials without notice. All technical or other advice by Company, whether verbal or written, concerning products, or the use of products in specific situations ("Advice") is given by Company and is used at the User's own risk.

Health & Safety

During the installation of any Watson Bowman Acme product, appropriate personal protective items should be worn at all times, including but not limited to the following:

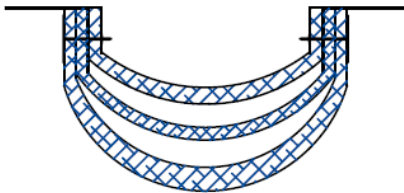
- Proper work clothing
- Safety glasses
- Safety boots
- Gloves
- Hard hat



Local rules and regulations regarding safe work environments and health should be followed.

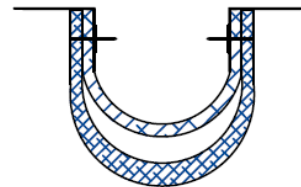
Product Components

The following are standard components for the floor condition:



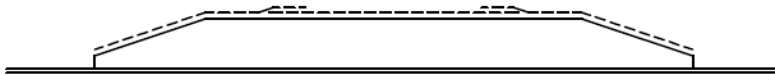
Flameguard II 8" thru 12" Floor Assembly
(For size and p/n refer to chart)

Model #	Part # 1 hr	Part # 2 hr
UFG-1201,1202	UFG1201	UFG1202
UFG-1001,1002	UFG1001	UFG1002
UFG-801,802	UFG801	UFG802



Flameguard II 4" thru 6" Floor Assembly
(For size and p/n refer to chart)

Model #	Part # 1 hr	Part # 2 hr
UFG-601,602	UFG601	UFG602
UFG-401,402	UFG401	UFG402



Splice Transition
(For size and p/n refer to chart)

Model #	Part #
UFG-1201,1201C,1202,1202C	3211
UFG-1001,1001C,1002,1002C	3211
UFG-801,801C,802,802C	3208
UFG-601,601C,602,602C	3206
UFG-401,401C,402,402C	3204



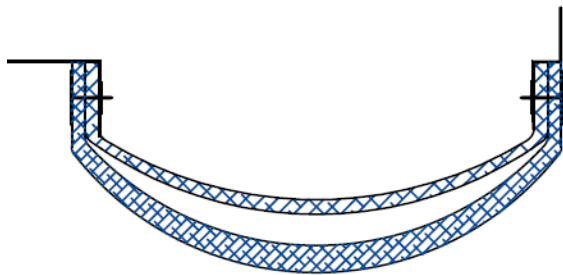
1/4" X 2-1/4" Concrete
Sleeve Anchor
Part Number - #6913



1/4" Flat Washer
Part Number - #7473

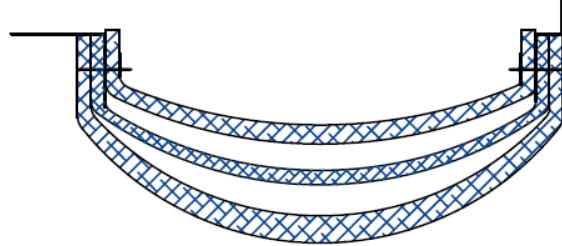


Hilti CP601S Sealant
Part Number - 2837



Flameguard II 4" thru 6" Corner Assembly
(For size and p/n refer to chart)

Model #	Part # 1 hr	Part # 2 hr
UFG-601C,602C	UFG601C	UFG602C
UFG-401C,402C	UFG401C	UFG402C



Flameguard II 8" thru 12" Corner Assembly
(For size and p/n refer to chart)

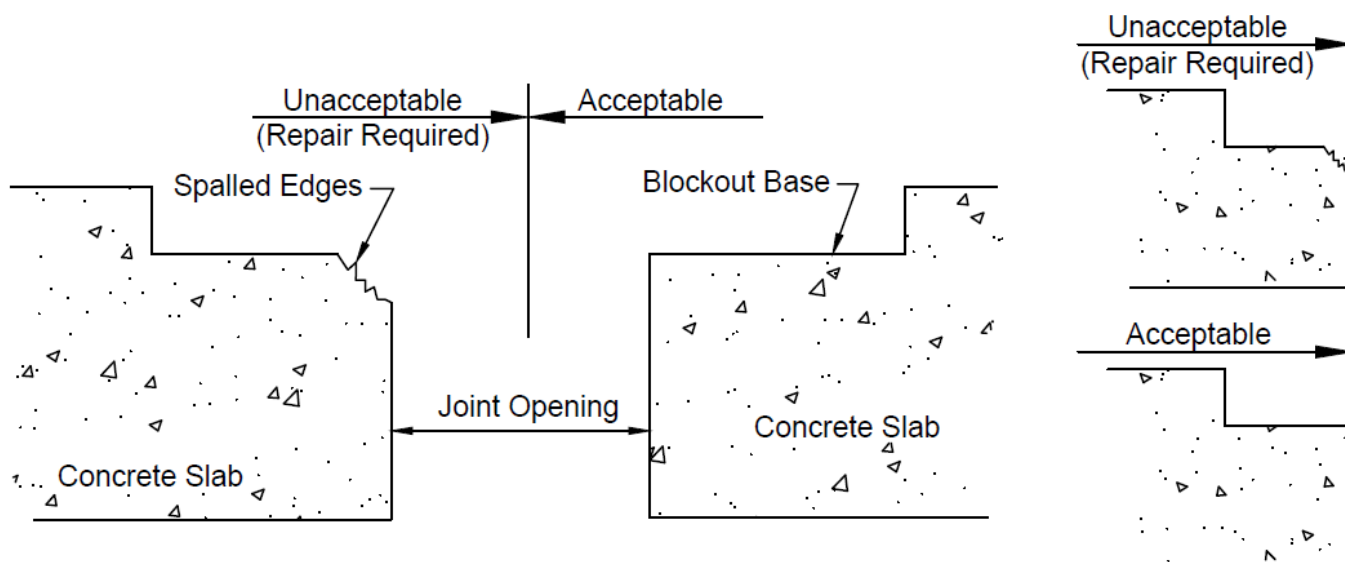
Model #	Part # 1 hr	Part # 2 hr
UFG-1201C,1202C	UFG1201C	UFG1202C
UFG-1001C,1002C	UFG1001C	UFG1002C
UFG-801C,802C	UFG801C	UFG802C

Installation

1

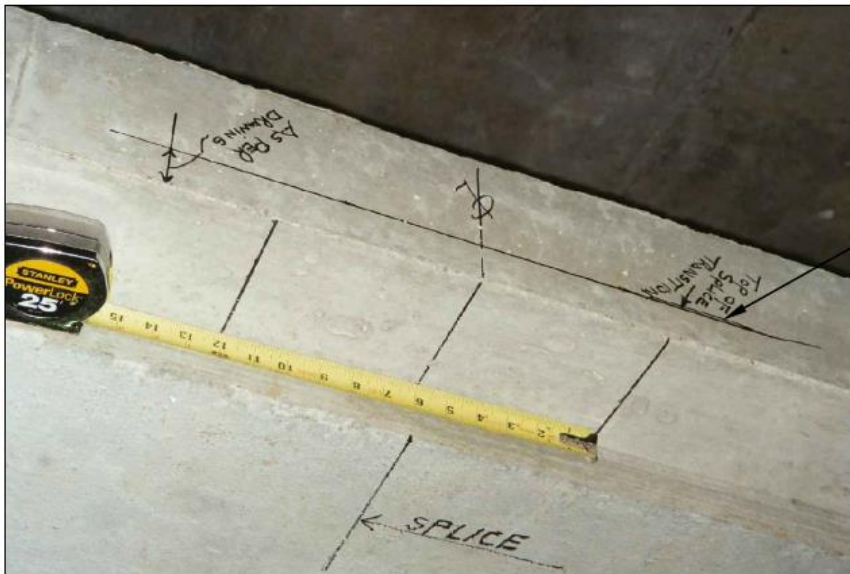
Prepare concrete block out for installation of fire barrier. Deficiencies in block out base and spalled edges must be corrected prior to beginning work.

Note: Contractor to repair any spalled edges with a Repair Material approved by the Buildings Structural Engineer.



2

Mark fire barrier splice locations and outline edges of splice transition as shown.



3

After splice locations have been determined, secure splice transition, utilizing duct tape to concrete slab as shown in photo.

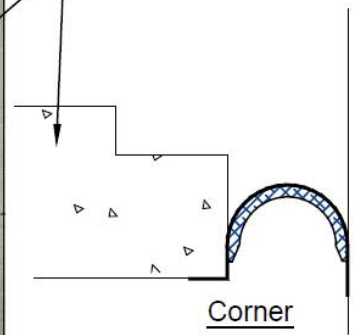
Splice Transition

Duct Tape
(By others)



Concrete Slab

Corner

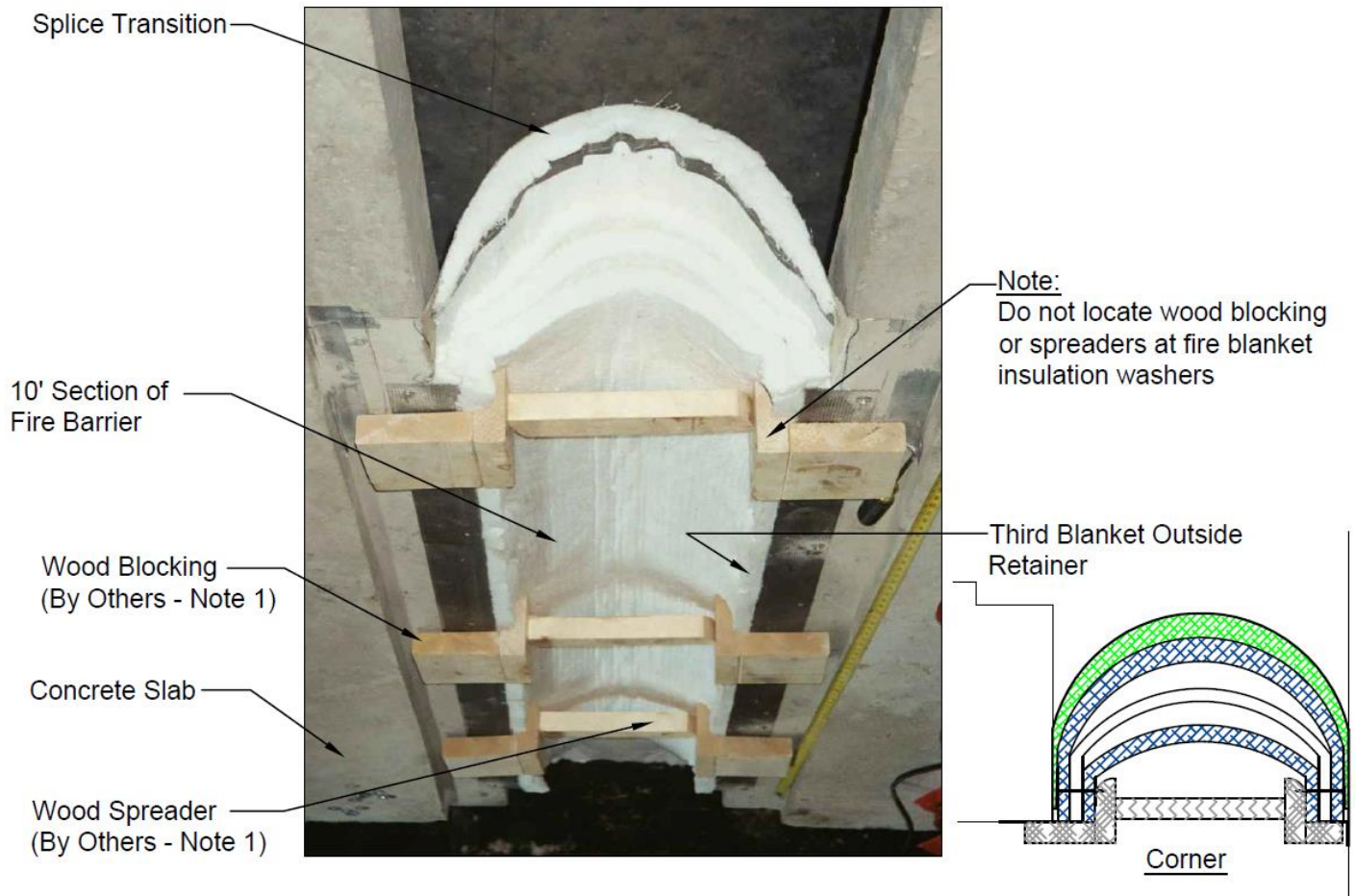


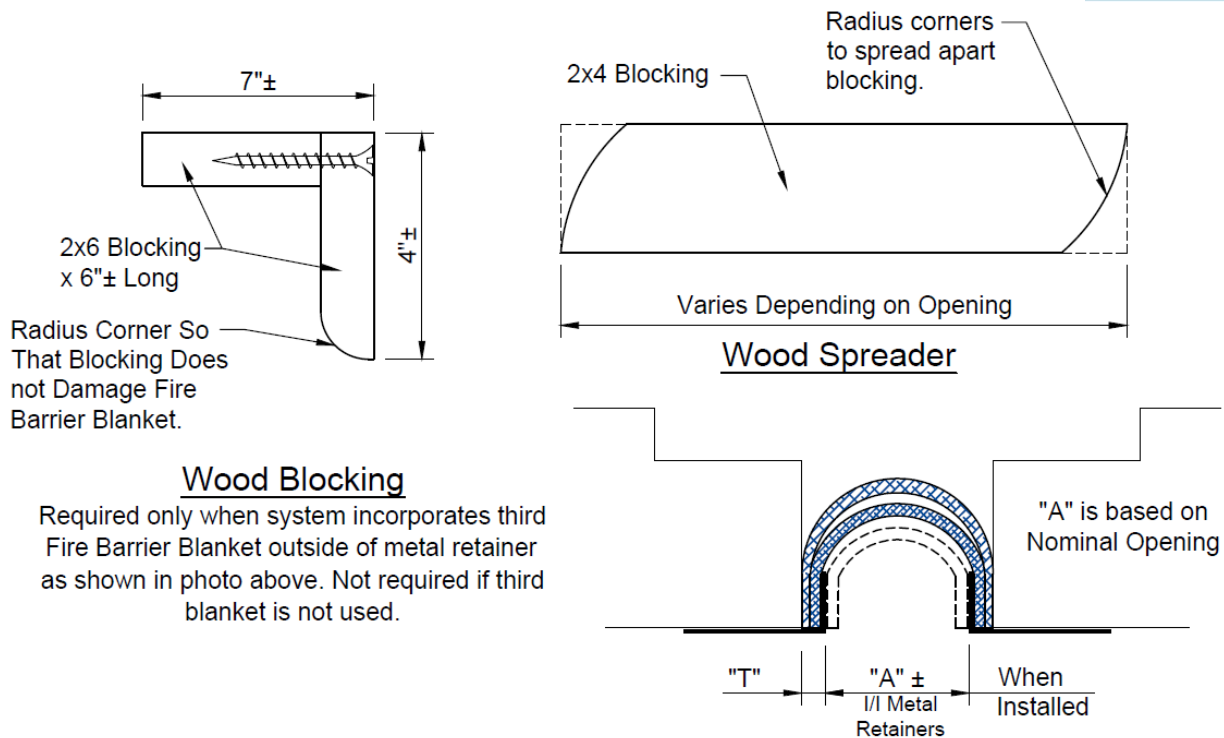
4

Insert 10' section of fire barrier into opening. Ensure that end of fire barrier is located on centerline of Splice Transition. Once fire barrier is inserted into opening, mount wood blocking, insert and wedge wood spreader to expand fire barrier to its correct position.

Notes:

1. Wood blocking and spreader is required to ensure that fire barrier is installed tight to adjacent concrete construction.

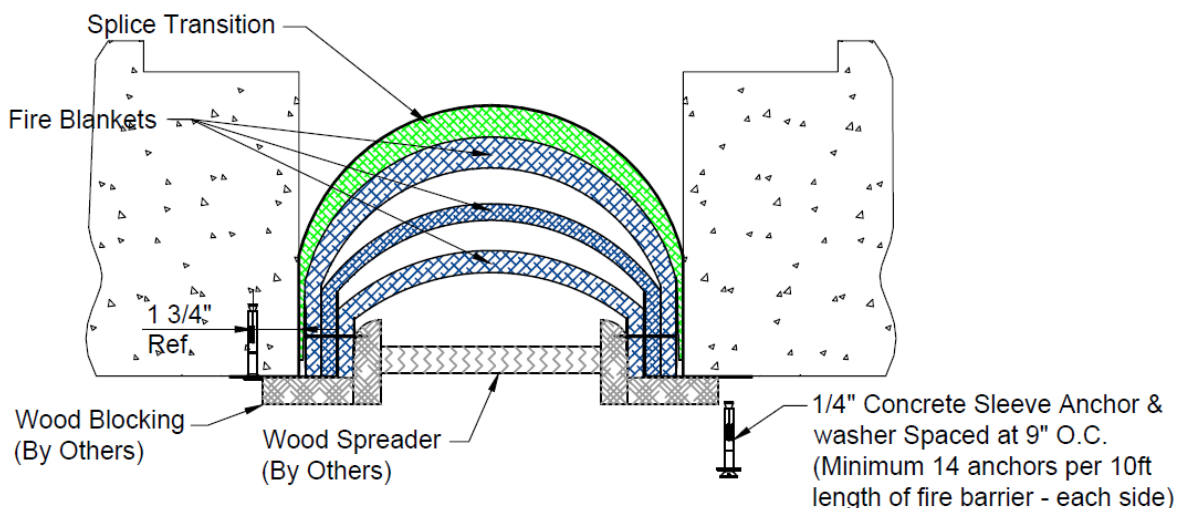




Model	"A"	"T"
UFG-1201,1201C,1202,1202C	10"	1"
UFG-1001,1001C,1002,1002C	8"	1"
UFG-801,801C,802,802C	6"	1"
UFG-601,601C,602,602C	4"	1"
UFG-401,401C,402,402C	2"	1"

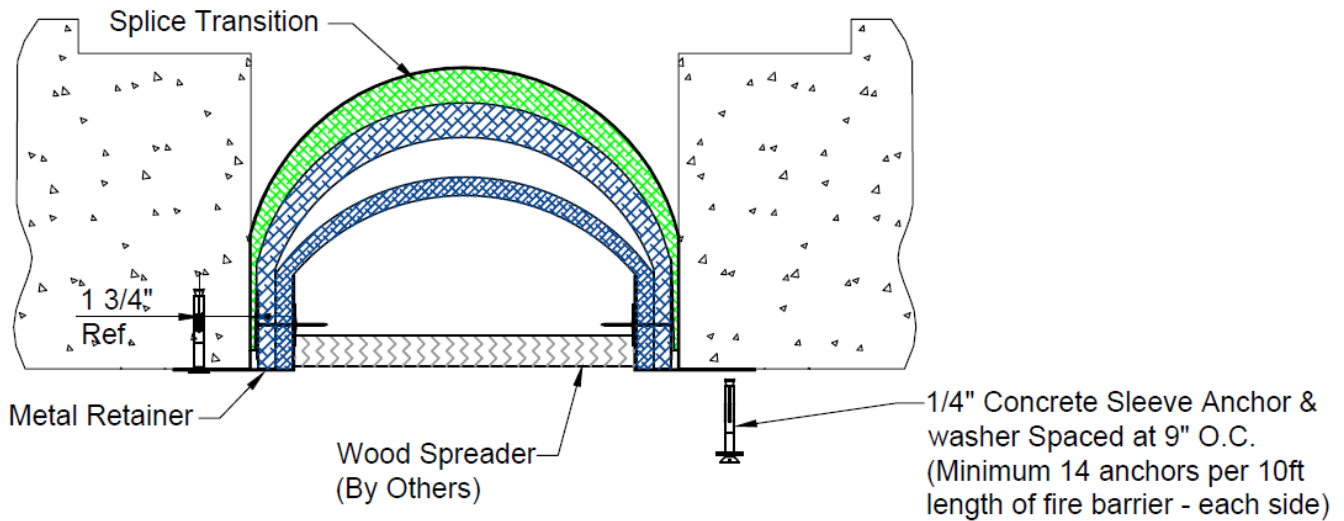
5A

Once fire barrier has been blocked open, mark and drill holes for 1/4" x 2 1/4" lg concrete sleeve anchors spaced at 9" O.C. Once the holes have been drilled, remove powder dust, exercising care not to get debris into fire blanket assembly. Install concrete sleeve anchor with washers.



5B

Once fire barrier has been blocked open, mark and drill holes for 1/4" x 2 1/4" lg concrete sleeve anchors spaced at 9" O.C. Once the holes have been drilled, remove powder dust, exercising care not to get debris into fire blanket assembly. Install concrete sleeve anchor with washers.



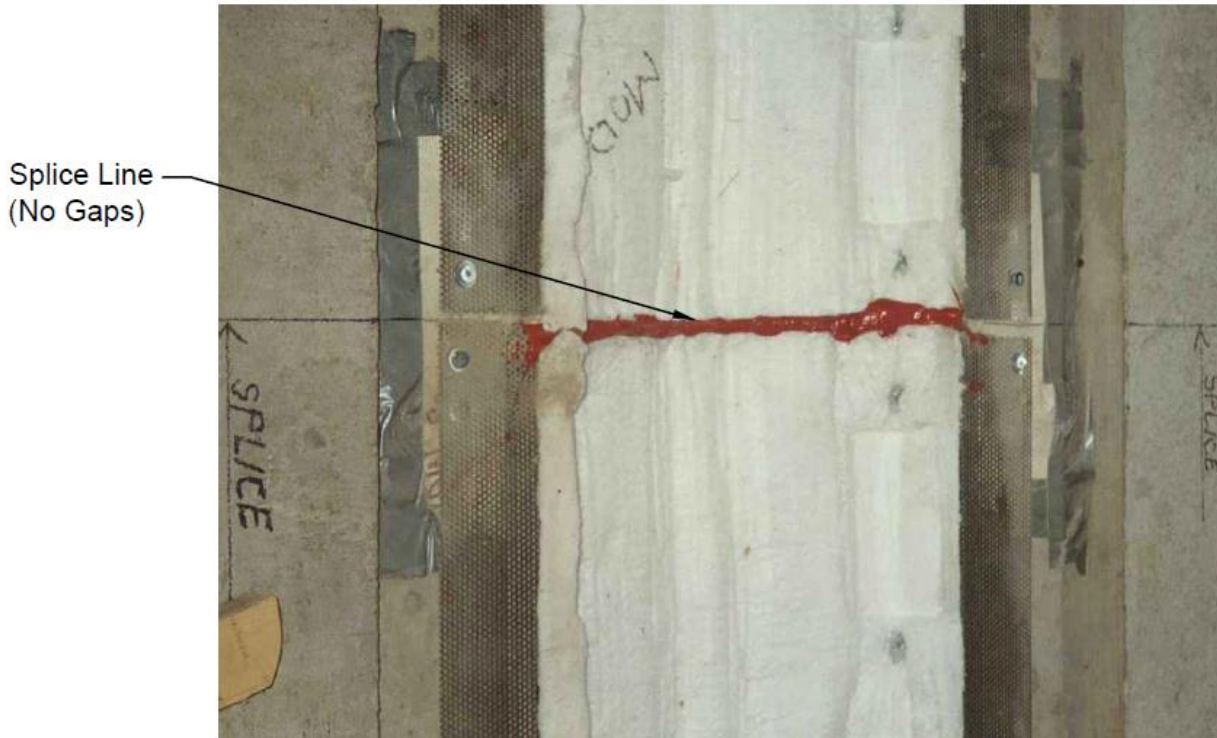
6

After the first section of fire barrier has been installed, apply CP601S sealant to all blanket layers of the fire blanket assembly (Except: slice transition).



-
- 7** Repeat Step 4 with next section of fire barrier. Install next section, ensuring there are no gaps at the splice location between blankets, as shown below.

Note: To remove small gaps between sections of fire barrier, gently tap opposite ends of metal retainers with a hammer and wood blocking to slowly move the fire barrier forward, compressing the CP601S sealant at the splice line. Exercise care not to damage fire barrier blanket where wood blocking is applied.



-
- 8** After the next fire barrier section is in place, repeat step 5A or 5B.

-
- 9** With installation complete, temporarily cover system to ensure debris does not enter fire barrier cavity. It shall be the installer's responsibility to protect completed fire barrier installations. Damaged fire barriers will be replaced at installer's expense.
-

Follow us on social media for industry news, new product announcements & more:

