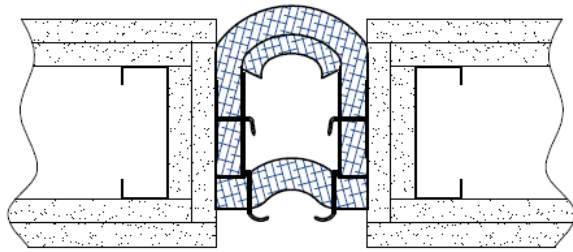
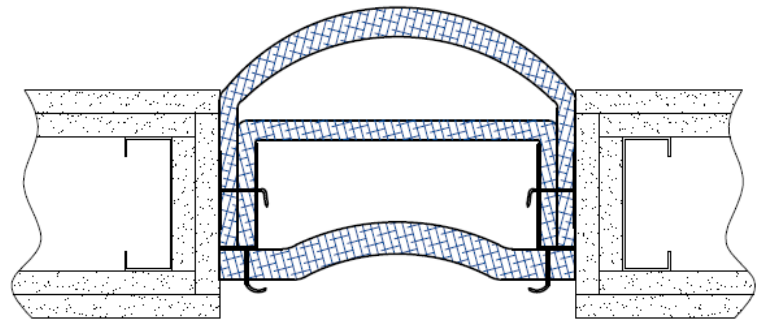


Installation Procedure

Last Updated: March 2, 2021



4" & 6" Joint
Openings



8"-26" Joint Openings

Wabo[®]FlameGuard II – VFG 4"-26"

Vertical Fire Barrier Systems for Expansion Joints

The following installation procedure is very important and must be fully understood prior to beginning any work. To ensure proper installation and performance of expansion joint system the following actions must be completed by the installing contractor. **Failure to do so will affect product warranty.**

- 1) Carefully read and understand installation procedure. Contact WBA's Technical Service Department at (800) 677-4922 for product assistance.
- 2) Inspect all shipments and materials for missing or damaged components and hardware. Contact Customer Service at (800) 677-4922 with WBA's order number and invoice for prompt assistance.
- 3) Inspect substrate or adjacent construction for acceptance before beginning work. Report unacceptable construction to the project manager for scheduled repair work.
- 4) Review WBA shop drawings for project specific detailed information if Engineering services were purchased at time of order.

Information provided herein, including but not limited to, any drawing, design, photograph, graphic, or statement(s) ("Materials") are proprietary and the property of Watson Bowman Acme ("Company"). Reproduction, translation, or reduction to any electronic medium or machine-readable form, in whole or part, is strictly prohibited, except for the express purpose for which it has been furnished, without prior written consent of Company. All Materials contained herein are provided by Company for information purposes only. Company reserves the right to amend or withdraw any information contained in the Materials without notice. All technical or other advice by Company, whether verbal or written, concerning products, or the use of products in specific situations ("Advice") is given by Company and is used at the User's own risk.

Health & Safety

During the installation of any Watson Bowman Acme product, appropriate personal protective items should be worn at all times, including but not limited to the following:

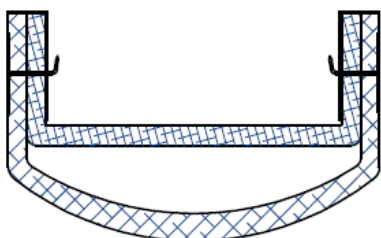
- Proper work clothing
- Safety glasses
- Safety boots
- Gloves
- Hard hat



Local rules and regulations regarding safe work environments and health should be followed.

Product Components

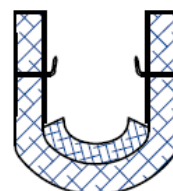
The following components are required for the installation of this product:



Flameguard II 8" thru 12" 1 hr Rating Wall Assembly
(For size and p/n refer to chart)

Corner Conditions Utilize Same Components

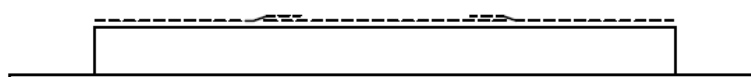
Model #	Part # 1 hr
VFG-1201	VFG1201
VFG-1001	VFG1001
VFG-801	VFG801



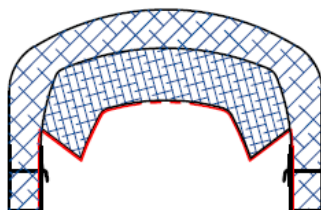
Flameguard II 4" thru 6" Wall Assembly
(For size and p/n refer to chart)

Corner Conditions Utilize Same Components

Model #	Part # 2 hr
VFG-602	VFG602
VFG-402	VFG402



Splice Transition
(For size and p/n refer to chart)

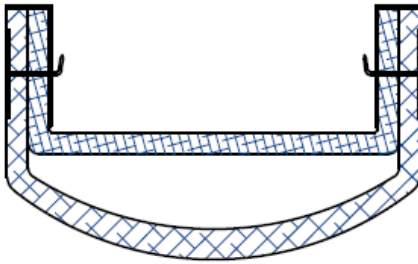


Flameguard II 8" 2 hr Rating Wall Assembly
(For size and p/n refer to chart)

Corner Conditions Utilize Same Components

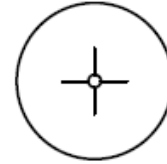
Model #	Part # 2 hr
VFG-802	VFG802

Model #	Part #	Model #	Part #	Model #	Part #
VFG-1201	3232	VFG-1602	3241	VFG-2602	3247
VFG-1001	3230	VFG-1402	3239	VFG-2402	3245
VFG-801	3228	VFG-1202	3238	VFG-2202	3244
VFG-602	3226	VFG-1002	3237	VFG-2002	3243
VFG-402	3224	VFG-802	3236	VFG-1802	3242



Flameguard II 10" thru 26" 2 hr Rating Wall Assembly
(For size and p/n refer to chart)
Corner Conditions Utilize Same Components

Model #	Part # 2 hr
VFG-2602	VFG2602
VFG-2402	VFG2402
VFG-2202	VFG2202
VFG-2002	VFG2002
VFG-1802	VFG1802
VFG-1602	VFG1602
VFG-1402	VFG1402
VFG-1202	VFG1202
VFG-1002	VFG1002

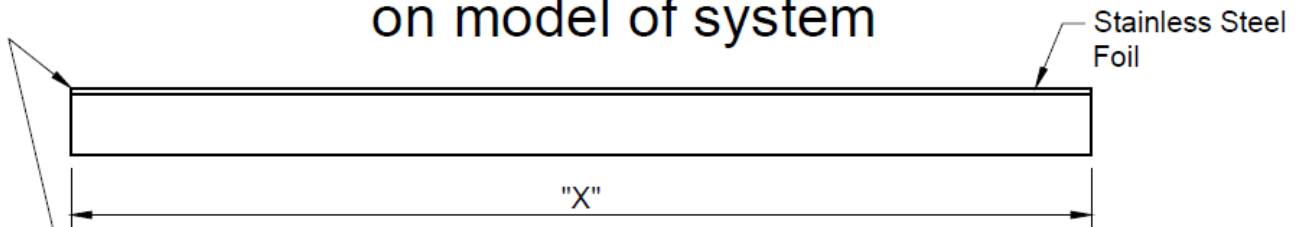


1 3/16" Dia Speed Washer
Part Number -



Hilti CFS-S SIL GG Sealant
Part Number - #2861

Components shown below vary in size depending
on model of system



Caution:
Sharp Edges.
use gloves when
handling.

(For size refer to chart)

Model #	"X"
VFG-1201	18"
VFG-1001	15"
VFG-801	12"
VFG-602	9"
VFG-402	6"

Model #	"X"
VFG-1602	27"
VFG-1402	24"
VFG-1202	21"
VFG-1002	18"
VFG-802	15"

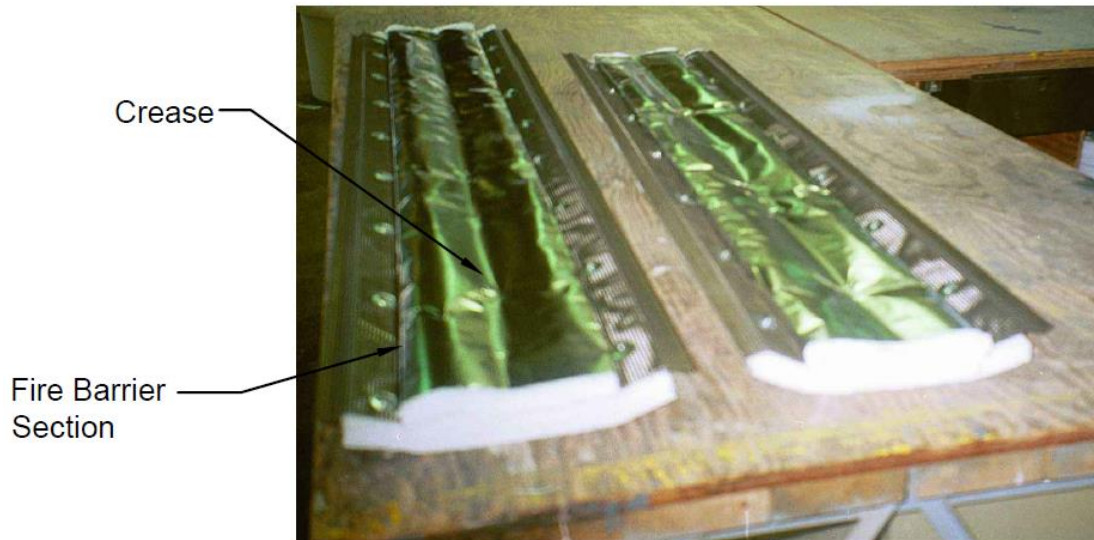
Model #	"X"
VFG-2602	42"
VFG-2402	39"
VFG-2202	36"
VFG-2002	33"
VFG-1802	30"

Layer "A" Fire Blanket

Installation

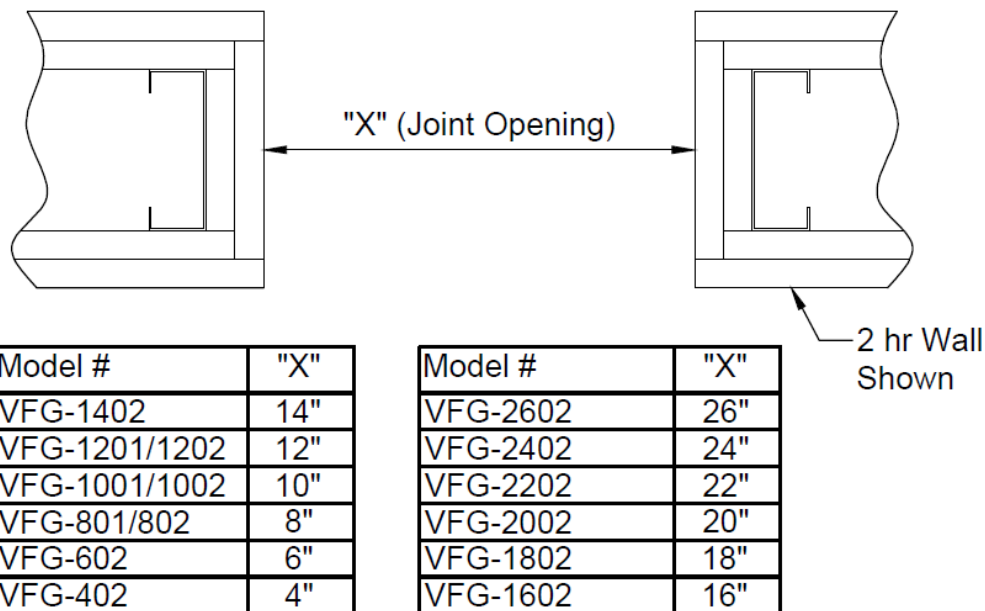
1

Prior to installation, utilize a round tube or 2x4 to place a crease in the fire barrier section. Exercise care not to damage or puncture fire barrier section. This step will help with folding and installing fire barrier into joint opening.



2

Prior to beginning work, installer shall inspect for proper wall construction. Verify joint opening is as called for on chart.

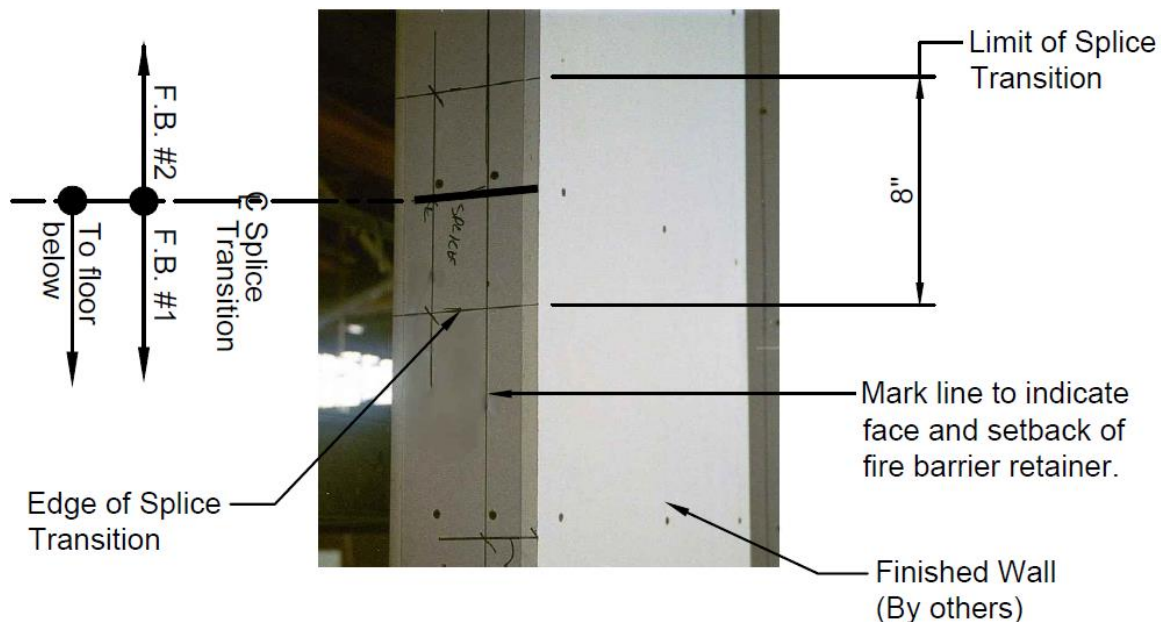


3

Mark fire barrier splice locations and outline edges of splice transition as shown.

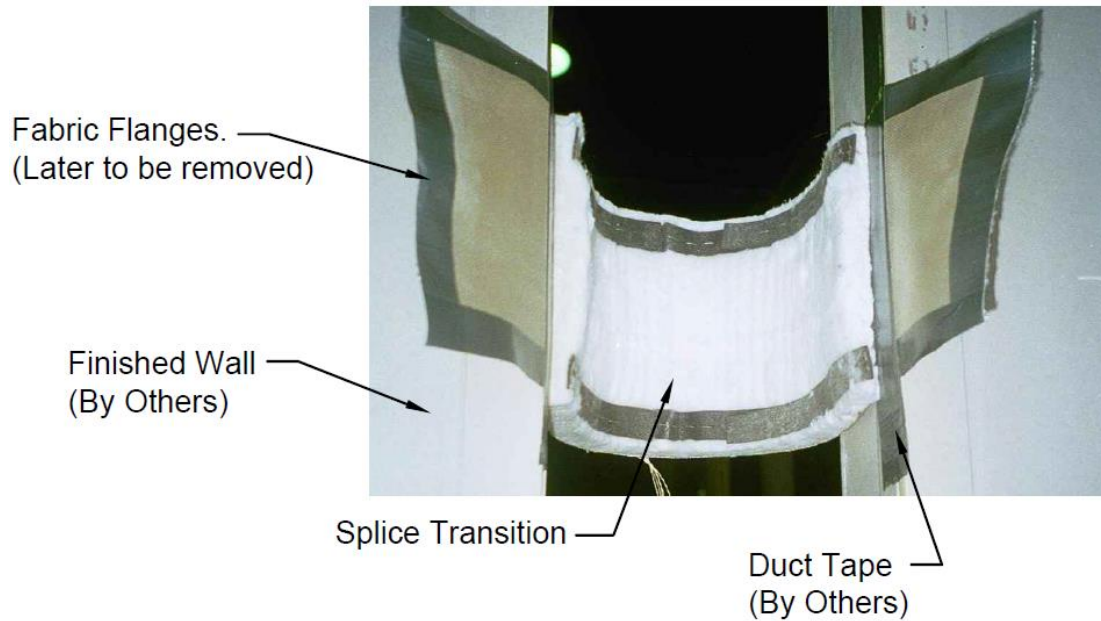
Note:

Refer to WBA shop drawings to determine setback of Splice transition.



4

After splice locations have been determined, secure splice transition, utilizing duct tape to finished wall as shown in photo. Locate duct tape to secure & support splice transition from sagging downward. Duct tape along vertical edge of blanket is the best location.

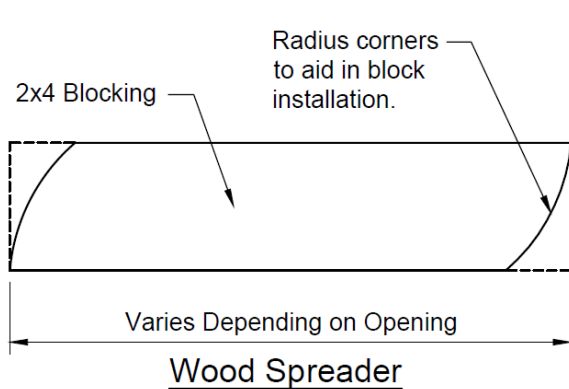
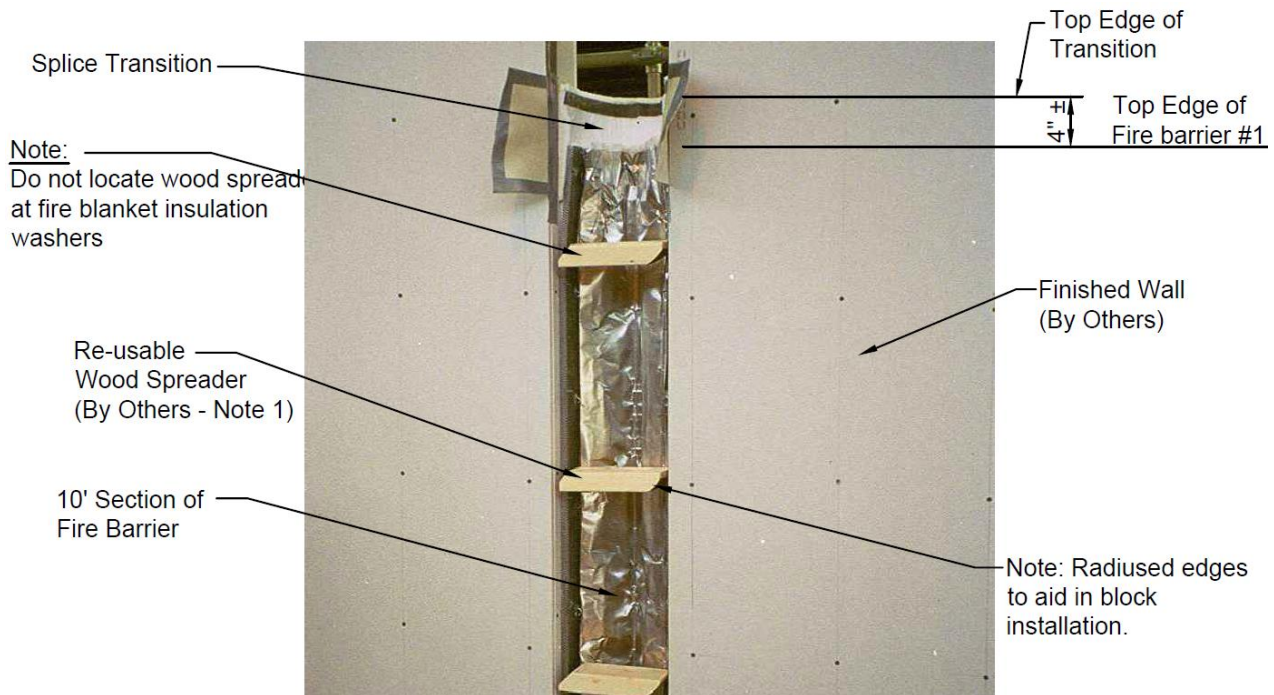


5

Insert 10' section of fire barrier into opening. Ensure that end of fire barrier is located on centerline of splice transition. Once fire barrier is inserted into opening, install and wedge wood spreaders to expand fire barrier to its correct position.

Notes:

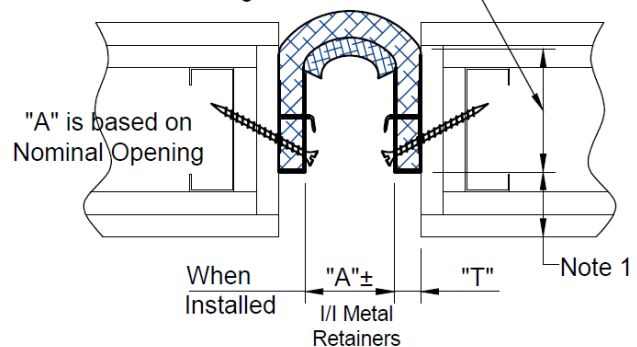
1. Wood spreaders are required to ensure that fire barrier is installed tight to adjacent wall construction. WBA recommends four wood spreaders per 10 ft. length of fire barrier.



Note:

1. Set back determined by proposed expansion joint cover and its overall depth, refer to WBA shop drawings. Fire Barrier must clear expansion joint cover.

Maintain Minimum 2 1/2" overlap to wall surface to achieve rating



Model	"A"	"T"
VFG-1402	10"	2"
VFG-1201/1202	9 1/2"	1 1/4"
VFG-1001/1002	7 1/2"	1 1/4"
VFG-801/802	5 1/2"	1 1/4"
VFG-602	5"	1/2"
VFG-402	3"	1/2"

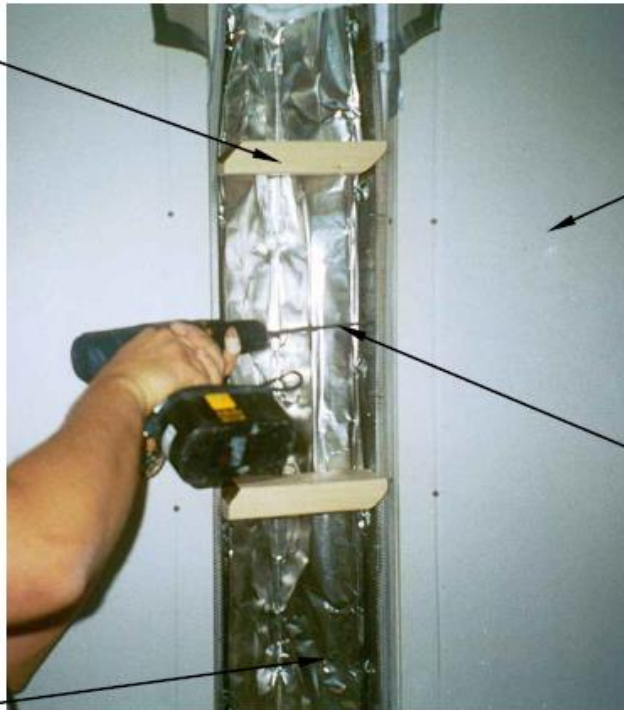
Model	"A"	"T"
VFG-2602	22"	2"
VFG-2402	20"	2"
VFG-2202	18"	2"
VFG-2002	16"	2"
VFG-1802	14"	2"
VFG-1602	12"	2"

6

Once fire barrier has been blocked open, mark locations for drywall screws spaced at 9" O.C. Once locations have been marked, install drywall screws.

Note: Drywall screws supplied by others. On larger systems, 4" long coarse thread drywall screws will be required to achieve proper stud engagement.

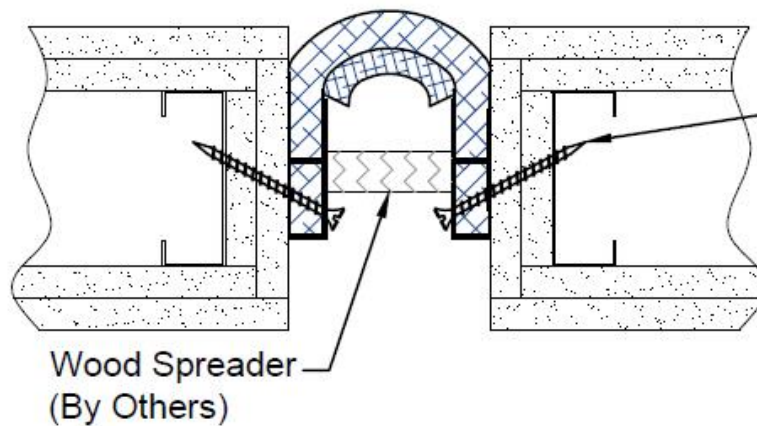
Wood Spreader
(By Others)



Finished Wall
(By Others)

Drywall screws
spaced at 9" O.C.
(By Others)

10' Section of
Fire Barrier



Drywall screws
spaced at 9" O.C.
(By Others)

Wood Spreader
(By Others)

7

After the first section of fire barrier has been installed, apply CFS-S SIL GG (#2861) sealant to all blanket layers of the fire blanket assembly (Except: slice transition).

CFS-S SIL GG
(#2861) Fire Sealant
applied to each
individual layer.

Splice Transition



8

Repeat Step 5 with next section of fire barrier. Install next section, ensuring that there are no gaps at the splice location between blankets, as shown below.

Note:

1. To remove small gaps between sections of fire barrier, gently tap opposite ends of metal retainers toward splice line with a hammer and wood blocking, compressing the CFS-S SIL GG (#2861) sealant at the splice line. Exercise care not to damage fire barrier blanket where wood blocking is applied.
2. Once fire barrier sections have been installed, utilize a sharp knife to remove flaps of splice transition section. Exercise care not to damage fire barrier sections or adjacent wall surface.

Splice Transition
Flaps (Note 2)

Splice Line
(No Gaps)



9

Once all vertical sections have been installed, proceed with installation of layer "A".

Notes:

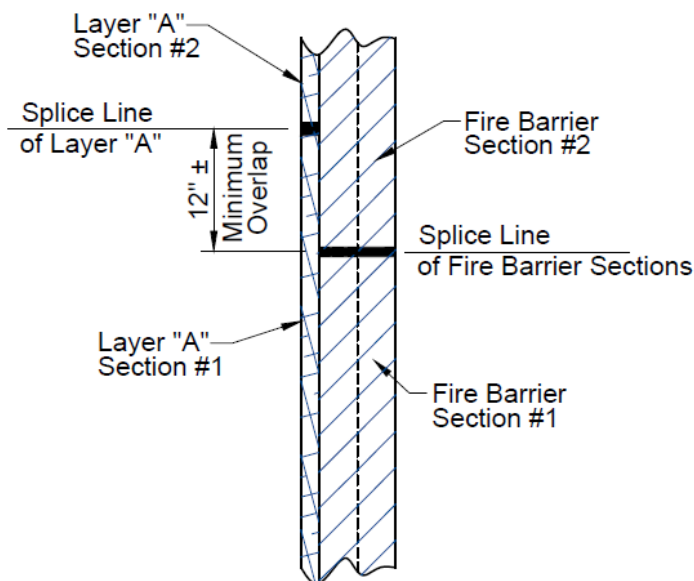
Watson Bowman Acme
95 Pineview Drive
Amherst, NY 14228
phone: 716-691-7566
fax: 716-691-9239
watsonbowmanacme.com

WBA P/n #20224

1. When installing layer "A", align edge of blanket flush with inside opening of wall (as shown). Once blanket is flush with the wall opening, fasten layer "A" on to metal retainers using the drywall screws and speed washers (supplied), spaced at 9" OC. Do not compress blanket when installing speed washers. After one side has been fastened, repeat procedure for other side.
2. At splice lines for layer "A", apply a layer of CFS-S SIL GG (#2861) sealant at the splice location as shown.

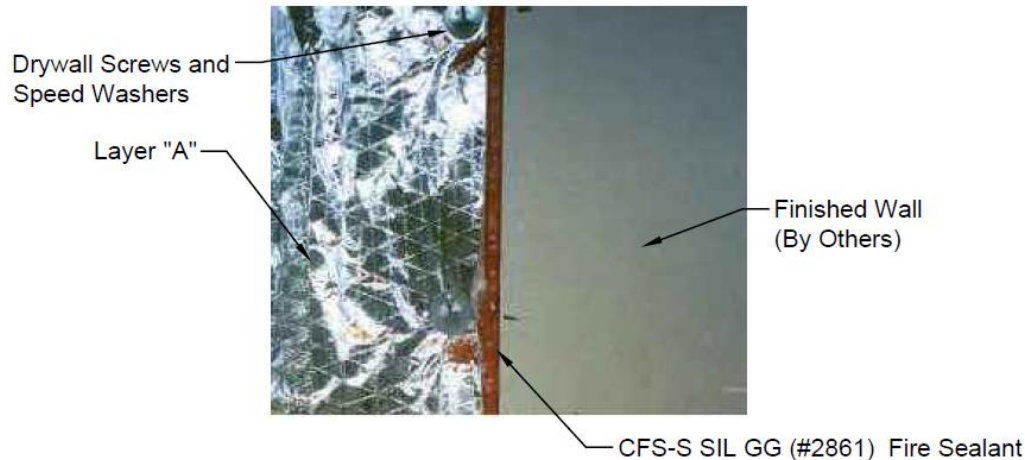
Installation Notes:

1. Utilizing a marker, mark locations on wall face where the drywall screws and speed washers will fasten layer "A" to metal retainers.

**Splice Line Recommendations**

10

After layer "A" has been installed, apply a bead of CFS-S SIL GG (#2861) sealant along edges of layer "A" and wall opening as shown. This is to ensure that there is no gapping between the fire barrier and wall opening.

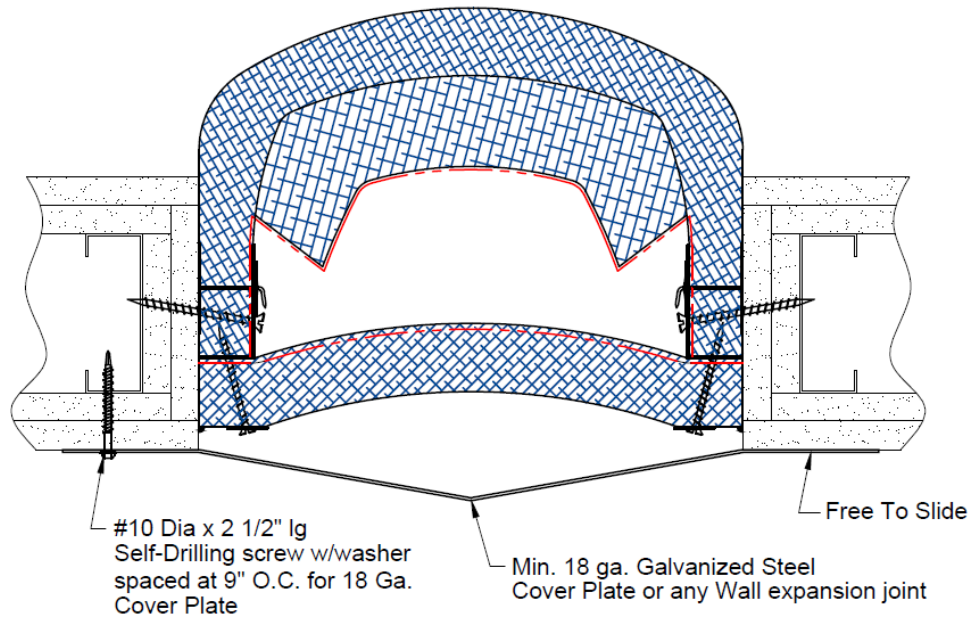


11

Fire barrier installation for corner condition is typical to procedure shown above. Actual Fire Barrier system and components remain unchanged.

12

Once all fire barrier blanket layers have been installed, a Min 18 Ga. Steel Coverplate or any wall expansion joint shall be installed over the fire barrier. When using a cover plate or wall expansion joint, the cover plate system shall meet the movement criteria of the fire barrier. This is to ensure that the fire barrier will always be covered and protected.



Follow us on social media for industry news, new product announcements & more:

