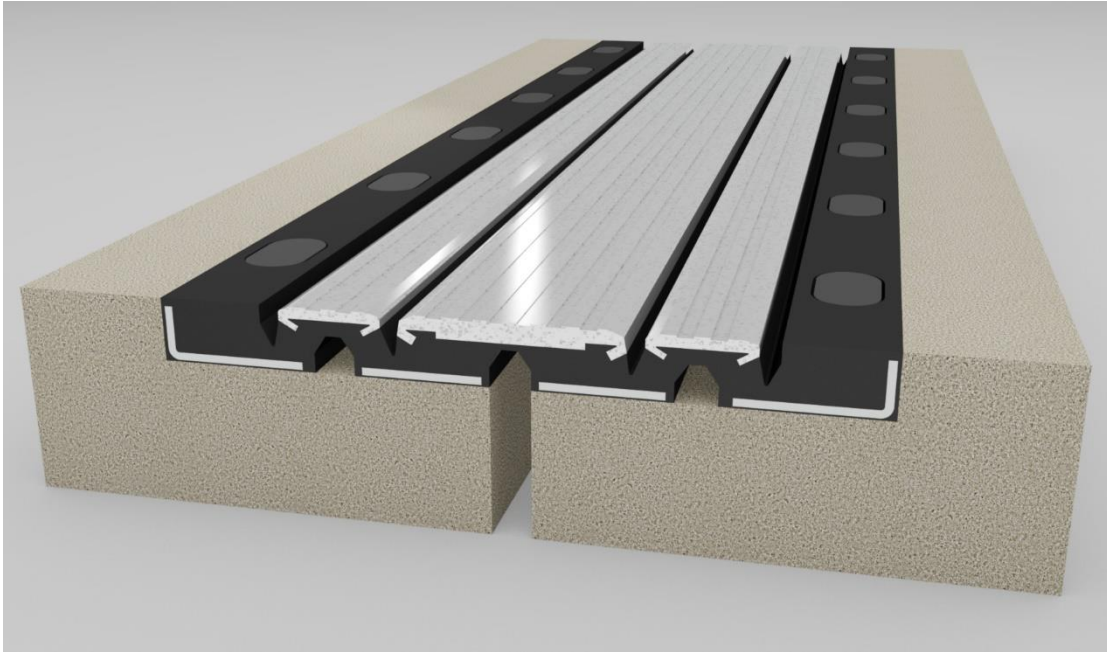


Installation Procedure

Last Updated: July 2018



Wabo®Flex SR

Molded Rubber Segmental Expansion Joint System for Bridge & Highway Applications

The following installation procedure is very important and must be fully understood prior to beginning any work. To ensure proper installation and performance of expansion joint system the following actions must be completed by the installing contractor. Failure to do so will affect product warranty.

- 1) Carefully read and understand installation procedure. Contact WBA's Technical Service Department at (800) 677-4922 for product assistance.
- 2) Inspect all shipments and materials for missing or damaged components and hardware. Contact Customer Service at (800) 677-4922 with WBA's order number and invoice for prompt assistance.
- 3) Inspect substrate or adjacent construction for acceptance before beginning work. Report unacceptable construction to the project manager for scheduled repair work.
- 4) Review WBA shop drawings for project specific detailed information if Engineering services were purchased at time of order.

Information provided herein, including but not limited to, any drawing, design, photograph, graphic, or statement(s) ("Materials") are proprietary and the property of Watson Bowman Acme Corp. ("Company"). Reproduction, translation, or reduction to any electronic medium or machine readable form, in whole or part, is strictly prohibited, except for the express purpose for which it has been furnished, without prior written consent of Company. All Materials contained herein are provided by Company for information purposes only. Company reserves the right to amend or withdraw any information contained in the Materials without notice. All technical or other advice by Company, whether verbal or written, concerning products, or the use of products in specific situations ("Advice") is given by Company and is used at the User's own risk.

Health & Safety

During the installation of any Watson Bowman Acme product, appropriate personal protective items should be worn at all times, including but not limited to the following:

- Proper work clothing
- Safety glasses
- Safety boots
- Gloves
- Hard hat



Local rules and regulations regarding safe work environments and health should be followed.

Pre-Installation Notes

The work shall consist of furnishing and installing a Wabo®Flex joint system in accordance with the details shown on the plans and the requirements of the specifications. The Wabo®Flex joint system is shipped in standard sections, 6'-0" lengths (4'-0" lengths for SR13). The molded neoprene monolithic units are reinforced with steel angles and embedded wear plates, which are tongue-and-grooved for field assembly.

Field Preparation

- The blockout in the roadways, curbs, sidewalks and barriers shall be constructed to the dimensions shown on the shop drawings. All air voids 1/4" (6 mm) and larger shall be pointed with an approved grout. The bottom surface of the blockout shall be parallel with the plane of the roadway (true and flat).
- The anchor spacing, corresponding to the dimensions spanning the open joint, must be verified and adjusted for temperature prior to the installation of the anchors.

Anchor Placement

- Cast-in-place type anchors shall be installed into the formwork starting at the gutterline and proceeding toward the "field-cut piece." Care shall be taken to ensure that the anchors are set at right angles to the bottom of the blockout.

Panel Installation

1

Starting at the curb sections, position the NP1 Sealant bedding material as shown on the shop drawings. Place fabricated curb into blockout and install fastening hardware.

-
- 2** Place a 2 x 4 against the second set of anchors from the curb piece as a base for the jack. Adjust the jack to fit into the blockout and place another 2 x 4 against the end section of the curb piece. Compress the curb section and tighten nuts to the specified torque noted on the shop drawings.

 - 3** Apply NP1 Sealant to the tongue or groove ends of the fabricated curb and install first roadway section over the anchors and force adjacent blocks against the previously installed curb assembly. Continue this procedure with the standard sections until reaching the field-cut piece.

 - 4** After field measuring, cut the designated field-cut piece or pieces to the required dimension. Apply NP1 Sealant to the cut ends. Approximately one hour after initial placement, all nuts or bolts shall be re-torqued.

 - 5** With all sections installed to the satisfaction of the Engineer, fill the bolt cavity with URA Sealant.

 - 6** Seal void between Wabo®Flex sections and vertical face of blockout with NP1.
-

Follow us on social media for industry news, new product announcements & more:

