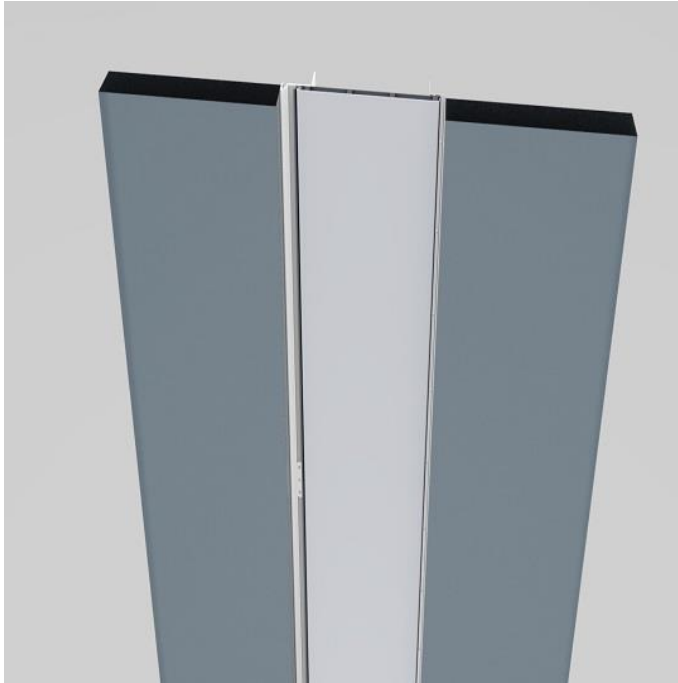


Installation Procedure

Last Updated: April 5th, 2018



Wabo® QuakeWall

High Performance Siesmic Wall Panel

The following installation procedure is very important and must be fully understood prior to beginning any work. To ensure proper installation and performance of expansion joint system the following actions must be completed by the installing contractor. Failure to do so will affect product warranty.

- 1) Carefully read and understand installation procedure. Contact WBA's Technical Service Department at (800) 677-4922 for product assistance.
- 2) Inspect all shipments and materials for missing or damaged components and hardware. Contact Customer Service at (800) 677-4922 with WBA's order number and invoice for prompt assistance.
- 3) Inspect substrate or adjacent construction for acceptance before beginning work. Report unacceptable construction to the project manager for scheduled repair work.
- 4) Review WBA shop drawings for project specific detailed information if Engineering services were purchased at time of order.

Information provided herein, including but not limited to, any drawing, design, photograph, graphic, or statement(s) ("Materials") are proprietary and the property of Watson Bowman Acme Corp. ("Company"). Reproduction, translation, or reduction to any electronic medium or machine readable form, in whole or part, is strictly prohibited, except for the express purpose for which it has been furnished, without prior written consent of Company. All Materials contained herein are provided by Company for information purposes only. Company reserves the right to amend or withdraw any information contained in the Materials without notice. All technical or other advice by Company, whether verbal or written, concerning products, or the use of products in specific situations ("Advice") is given by Company and is used at the User's own risk.

Health & Safety

During the installation of any Watson Bowman Acme product, appropriate personal protective items should be worn at all times, including but not limited to the following:

- Proper work clothing
- Safety glasses
- Safety boots
- Gloves
- Hard hat



Local rules and regulations regarding safe work environments and health should be followed.

Product Components

The following components are required for the installation of this product:



QuakeWall Panel



Anchors (not included, see WBA rep for suggested anchors as per application)

Recommended Equipment

This product requires the following additional equipment for an easy and successful installation:



Crane/other equipment for lifting and positioning heavy wall panels//



Electric screwdriver for installing wall anchors



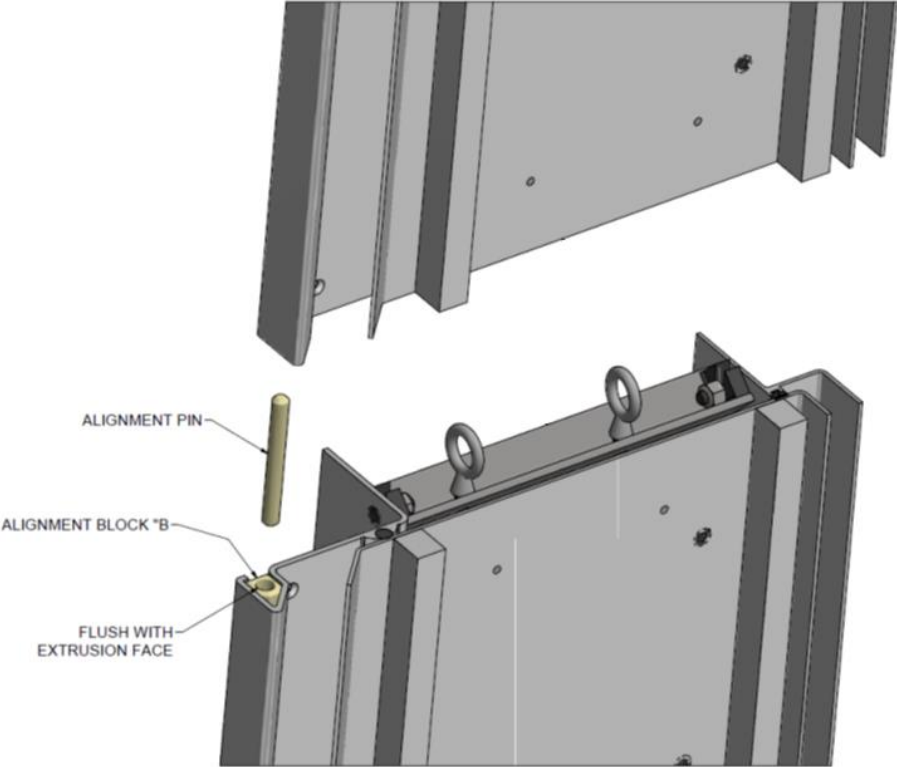
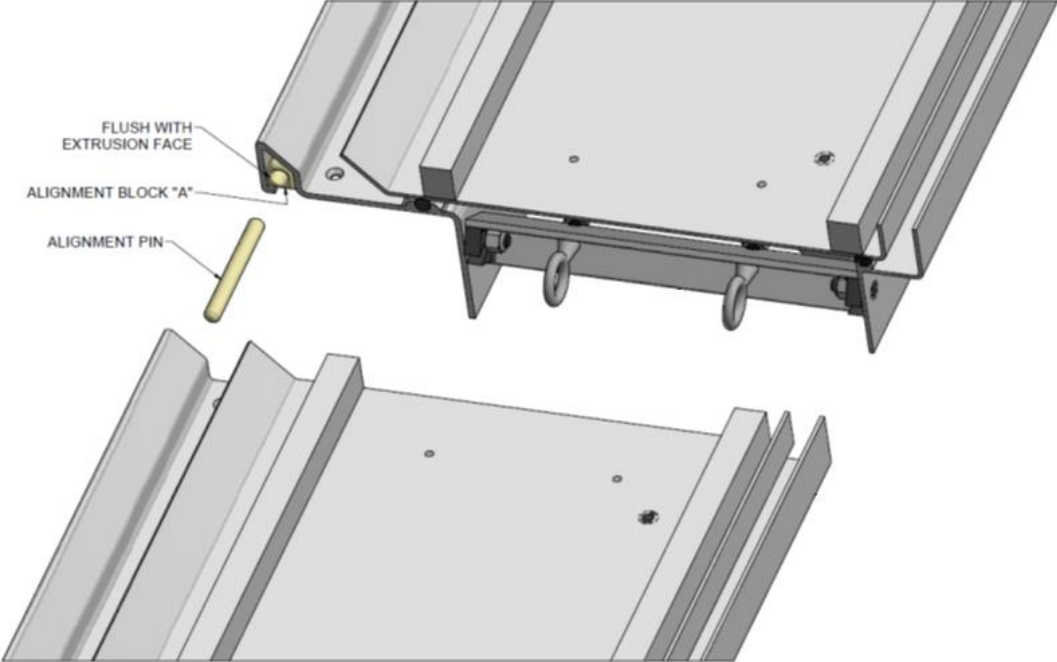
Prybar to open wall panel if necessary
(be sure to avoid scratching or damaging metal)



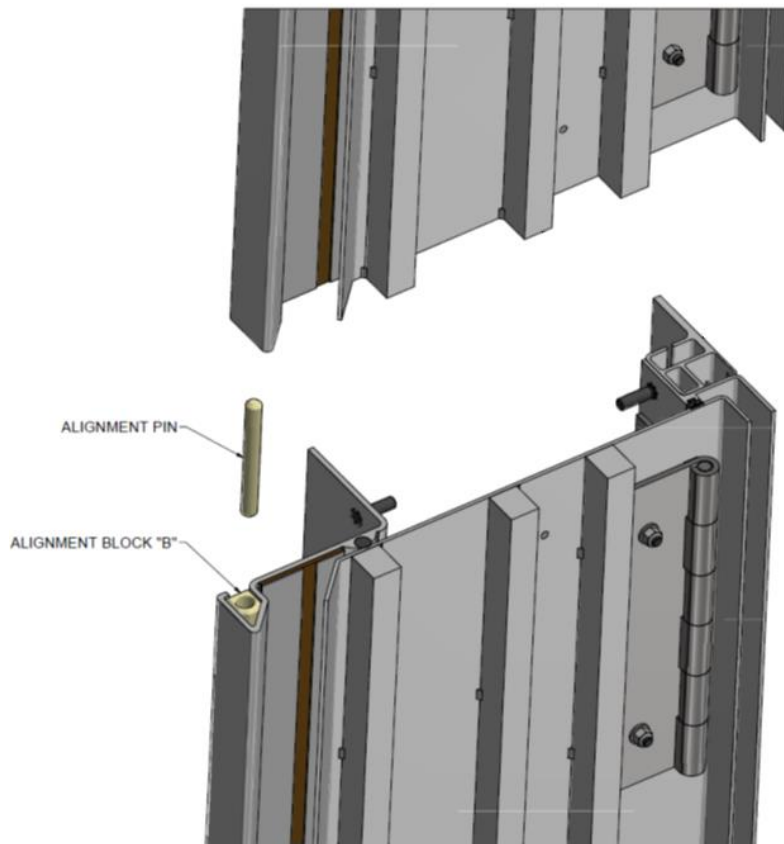
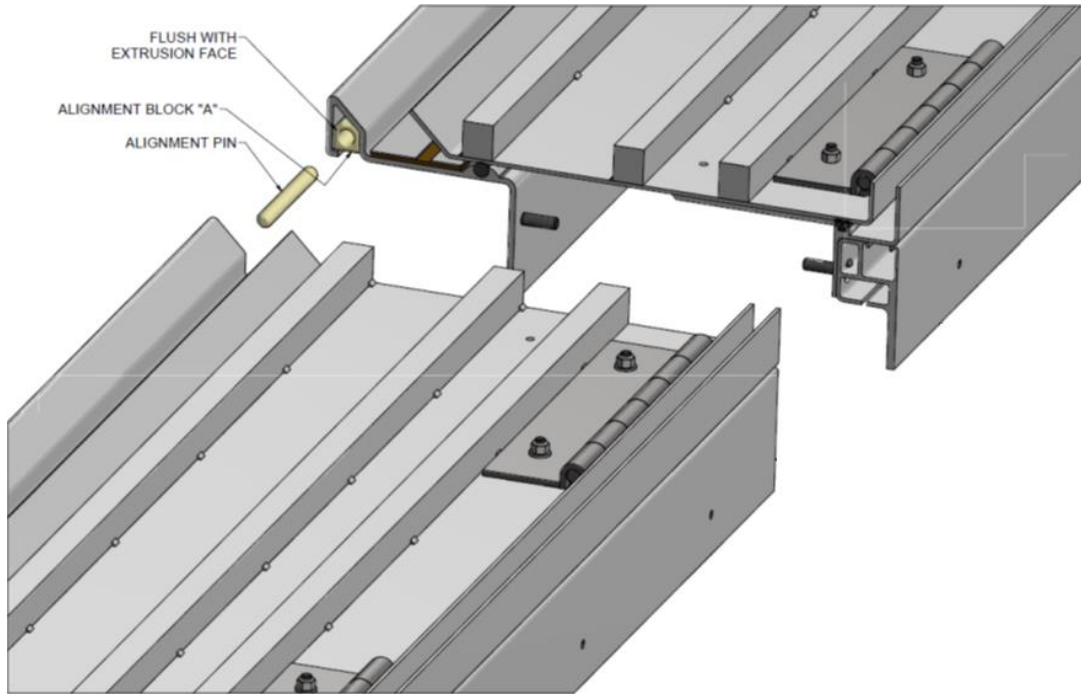
Plastic shims of various thickness

Product Drawings

Wabo®QuakeWall Wall-to-Wall Alignment

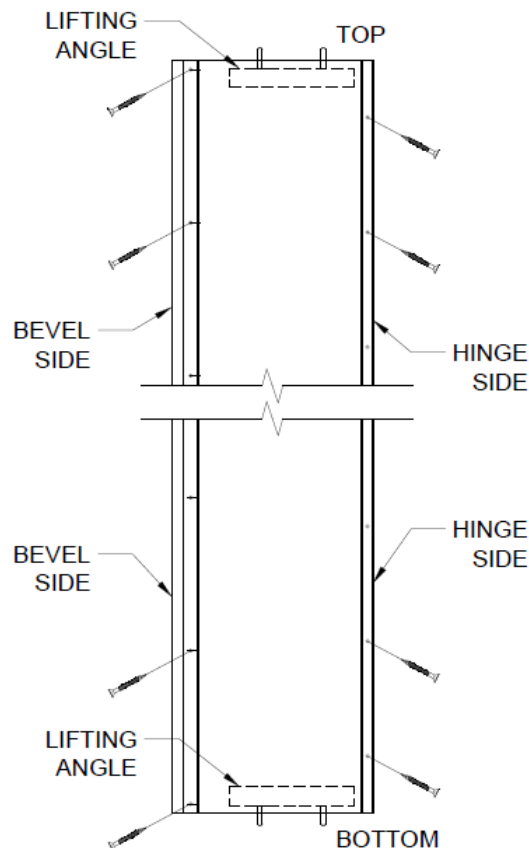


Wabo®QuakeWall Wall-to-Corner Alignment



Pre-Installation Notes

- The joint interface must be clean, sound and durable.
- If attaching to steel surfaces, inspect the steel to ensure it is in good condition. If pack rust or heavy oxidation is present, it must be removed. If steel loss is too great as determined by the Engineer of Record, the steel substrate will need to be removed and replaced.
- Concrete blockouts must be square and level, as per dimensions on drawing.
- Wabo®QuakeWall frame assemblies are made from lightweight aluminum. However, the panel infill weight can be substantial. Please ask a WBA representative for panel weight estimates.
- Wabo®QuakeWall is shipped completely assembled in its own crate, with lifting angles to hold the joint open in its nominal position.
- Wabo®QuakeWall requires no component assembly and can be installed with the panel closed.
- Structure members must be capable of supporting Wabo®QuakeWall panels as detailed in the contract drawings. The hinge-side joint-to-structure connections support the weight and seismic forces of the panel, care should be taken to ensure that Wabo®QuakeWall is anchored to a structurally sound blockout.
- Review shop drawings and form a Wabo®QuakeWall handling and placement plan. Installers should be familiar with Wabo®QuakeWall components and handling procedures prior to installing.
- Please refer to WBA drawings for mounting anchors, spacing and edge distance instructions (this may vary due to substrate conditions).
- Please cross-reference all blockout dimensions with WBA drawing before installing.



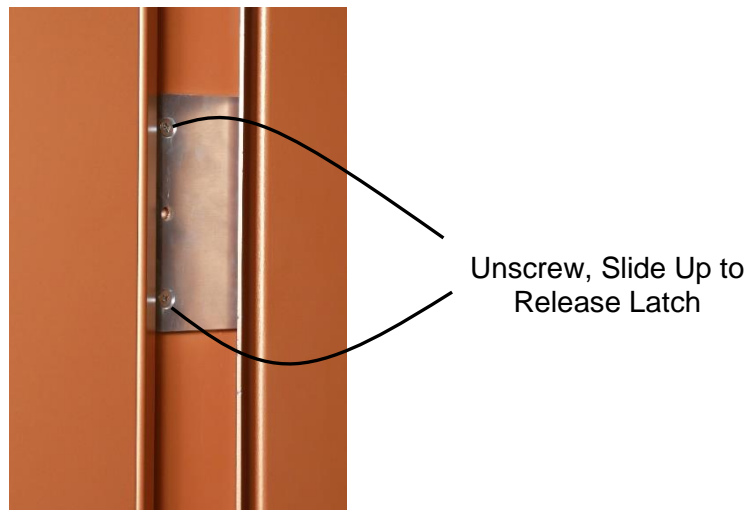
Installation

- 1** Install fire barrier system and/or waterproof membrane, if required, prior to positioning the Wabo®QuakeWall module.
 - 2** Remove bottom lifting angle from first panel. Attach chain or strap to top lifting angle and set first panel into blockout. Making sure the panel is flat against the inside of the joint opening, install anchors, beginning with 2 on bottom of hinge side then 2 on top of hinge side. Check alignment. Repeat on beveled side, then install remaining anchors on both sides, for a total of 8 anchors on beveled side and 10 on hinge side. Remove top lifting angle and check for level and square.
 - 3** Hoist next panel, tie strap to bottom lifting angle as a guide while lifting into place. Lift and position panel approx. 1ft. above existing panel. Remove bottom lifting angle. Insert pin into alignment block and shims on hinge side pocket.
 - 4** Lower panel, using shims and pin as alignment guide, until there is approx. 9"-11" inch gap between the two panels. Remove lifting angle. Lower further until approx. 1/8th gap. Making sure the panel is flat against the inside of the joint opening, install anchors, beginning with 2 on bottom of hinge side then 2 on top of hinge side. Check alignment. Repeat on beveled side, then install remaining anchors on both sides, for a total of 8 anchors on beveled side and 10 on hinge side. If placing another panel on top, repeat steps 3-4.
-

Post-Installation Notes

Joint Access after installing Wabo®QuakeWall

- If access to inside the joint behind the panel is desired, unscrew the latch and slide it over 1" to release the locking mechanism. The panel is held down with constant force springs totaling more than 100 lbs. of pressure. Use a prybar to pry the panel up for access, employ safety measures to ensure the spring-loaded panel does not close unintentionally.



- After access operations are complete, release the spring-loaded panel slowly until it is completely closed. Slide the latch closed, allowing the latch pin to engage and reinstall the latch screws. The latch should now be locked such that the panel cannot be pried open.

Field Service Assistance

- Throughout our history, a key focus has been providing best-in-class products and services to our customers. As a result, Watson Bowman Acme offers Field Service Assistance. Please contact us to discuss rates and schedules with our Field Service representatives to address any unknown field conditions, project specific recommendations or proper installation procedures of our products.

Follow us on social media for industry news, new product announcements & more:

