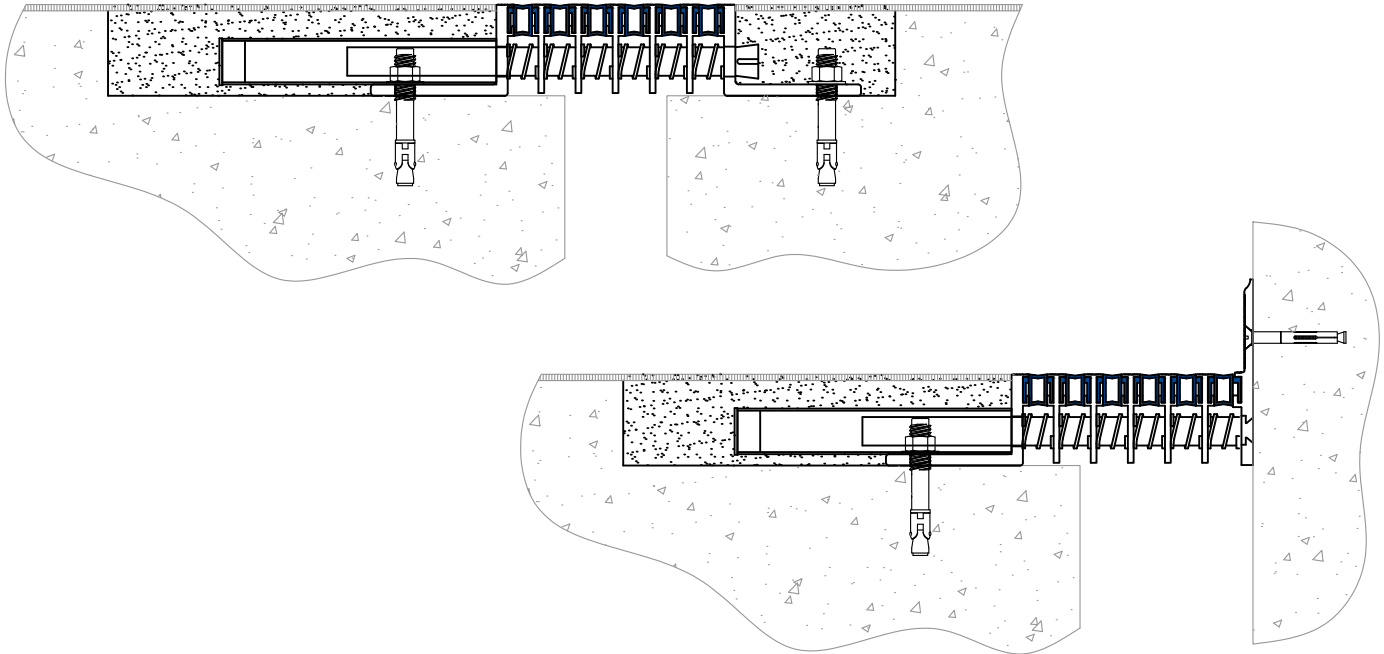




Installation Procedure

Watson Bowman Acme Corp. 95 Pineview Drive Amherst, NY 14228
phone: (716) 691-7566 fax: (716) 691-9239
website: www.wbacorp.com

Information provided herein, including but not limited to, any drawing, design, photograph, graphic, or statement(s) ("Materials") are proprietary and the property of Watson Bowman Acme Corporation ("Company"). Reproduction, translation, or reduction to any electronic medium or machine readable form, in whole or part, is strictly prohibited, except for the express purpose for which it has been furnished, without prior written consent of Company. All Materials contained herein are provided by Company for information purposes only. Company reserves the right to amend or withdraw any information contained in the Materials without notice. All technical or other advice by Company, whether verbal or written, concerning products, or the use of products in specific situations ("Advice") is given by Company and is used at the Users own risk.

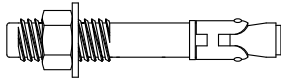


Wabo® VIP - Professional Series Model(s) VIP & VIP Corner Vertical Expansion Control System

The following installation procedure is very important and must be fully understood prior to beginning any work. To ensure proper installation and performance of expansion joint system the following actions must be completed by the installing contractor. Failure to do so will affect product warranty.

- 1) Carefully read and understand installation procedure. Contact WBA's Technical Service Department at (800) 677-4922 for product assistance.
- 2) Inspect all shipments and materials for missing or damaged components and hardware. Contact Customer Service at (800) 677-4922 with WBA's order number and invoice for prompt assistance.
- 3) Inspect substrate or adjacent construction for acceptance before beginning work. Report unacceptable construction to the project manager for scheduled repair work.
- 4) Review WBA shop drawings for project specific detailed information if Engineering services were purchased at time of order.

Standard components

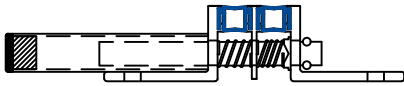


3/8" Dia x 3" Lg Kwik-bolt II
Concrete anchor
p/n: 6591



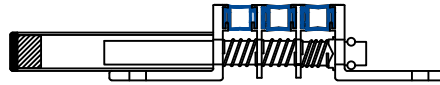
* 1/4" Dia x 2" Lg Threaded
Concrete anchor
p/n: 6913

Components shown below vary in size depending on model of system



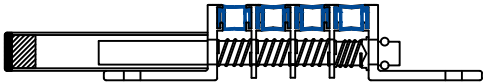
VIP-750

p/n: 10140 (Black) - 10180 (Black - Corner)
p/n: 10120 (Beige) - 10160 (Beige - Corner)
p/n: -10121 (Grey) - 10161 (Grey - Corner)



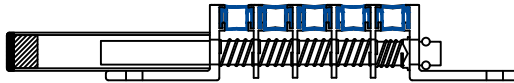
VIP-1125

p/n: 10142 (Black) - 10182 (Black - Corner)
p/n: 10122 (Beige) - 10162 (Beige - Corner)
p/n: -10123 (Grey) - 10163 (Grey - Corner)



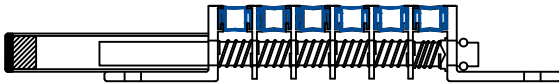
VIP-1500

p/n: 10144 (Black) - 10184 (Black - Corner)
p/n: 10124 (Beige) - 10164 (Beige - Corner)
p/n: -10125 (Grey) - 10165 (Grey - Corner)



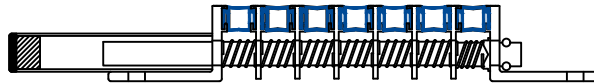
VIP-1875

p/n: 10146 (Black) - 10186 (Black - Corner)
p/n: 10126 (Beige) - 10166 (Beige - Corner)
p/n: -10127 (Grey) - 10167 (Grey - Corner)



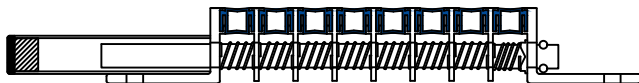
VIP-2250

p/n: 10148 (Black) - 10188 (Black - Corner)
p/n: 10128 (Beige) - 10168 (Beige - Corner)
p/n: -10129 (Grey) - 10189 (Grey - Corner)



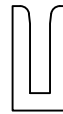
VIP-2625

p/n: 10150 (Black) - 10190 (Black - Corner)
p/n: 10130 (Beige) - 10170 (Beige - Corner)
p/n: -10131 (Grey) - 10171 (Grey - Corner)



VIP-3000

p/n: 10152 (Black) - 10192 (Black - Corner)
p/n: 10132 (Beige) - 10172 (Beige - Corner)
p/n: -10133 (Grey) - 10173 (Grey - Corner)



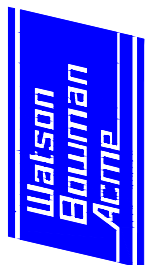
Splice Clip
(Factory Welded to Separator Bars)
p/n: 9092



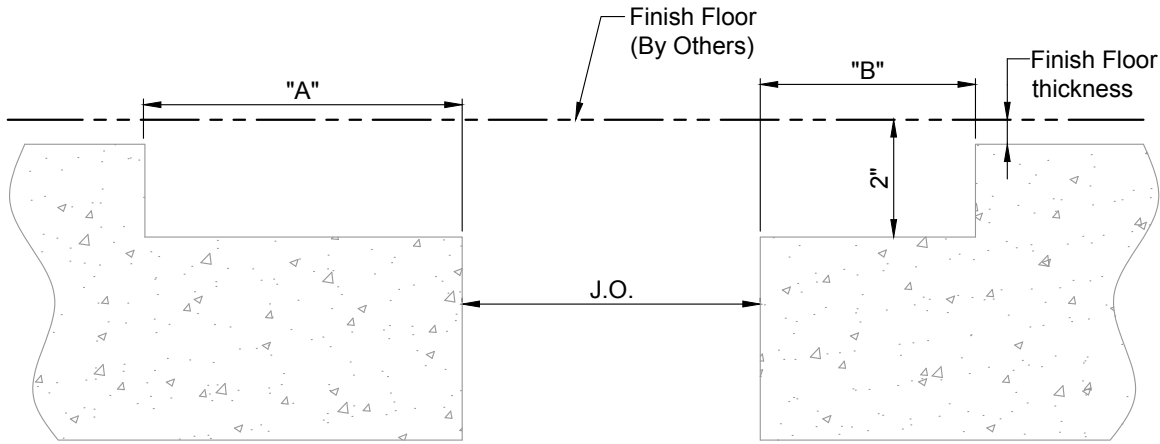
* Wall Bracket
p/n: 10026

All systems supplied in Standard shop assembled 10'-0" lengths

* Components required in Corner Condition



Installation Procedure



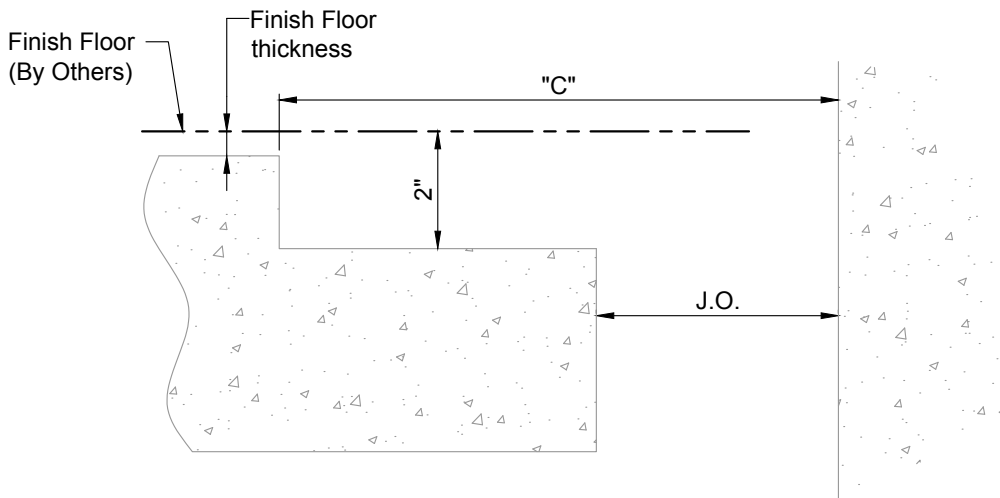
Dimension chart

Model #	J.O. Nom.	"A"	"B"
VIP-750	3/4"	8"	5"
VIP-1125	1"	9"	5"
VIP-1500	1 1/2"	9"	5"
VIP-1875	1 3/4"	10"	5"

Model #	J.O. Nom.	"A"	"B"
VIP-2250	2"	10"	5"
VIP-2625	2 1/2"	11"	6"
VIP-3000	3"	11"	6"

1

Prepare concrete block out for installation of Wabo®VIP Expansion Control System. Deficiencies in block out base and spalled edges must be corrected prior to beginning work.
Note: Utilizing concrete repair material, repair corner of concrete slab following manufacturers written instructions.



Dimension chart

Model #	J.O. Nom.	"A"	"B"
VIP-750	3/4"	8"	5"
VIP-1125	1"	9"	5"
VIP-1500	1 1/2"	9"	5"
VIP-1875	1 3/4"	10"	5"

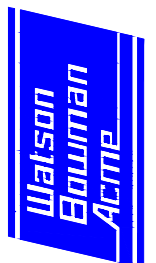
Model #	J.O. Nom.	"A"	"B"
VIP-2250	2"	10"	5"
VIP-2625	2 1/2"	11"	6"
VIP-3000	3"	11"	6"

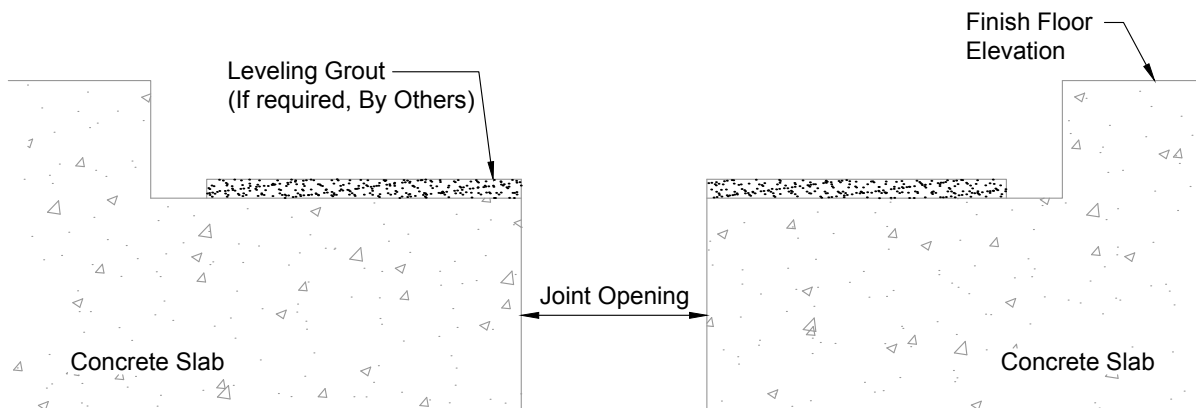
1A

Corner Condition:
Prepare concrete block out for installation of Wabo®VIP Expansion Control System. Deficiencies in block out base and spalled edges must be corrected prior to beginning work.
Note: Utilizing concrete repair material, repair corner of concrete slab following manufacturers written instructions.

Installation procedure: VIP system

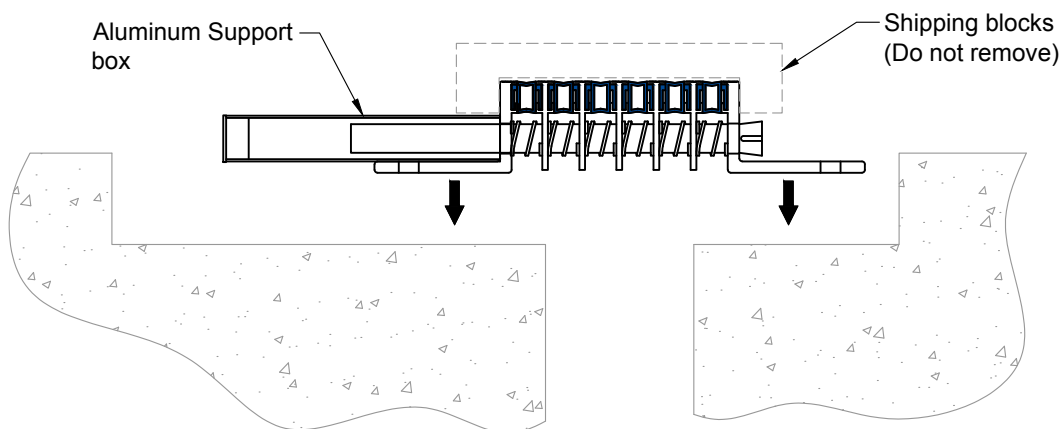
Watson Bowman Acme Corp. reserves the right to amend or withdraw any information contained herein without notice and will not be responsible for any inaccuracy or ambiguity of any information contained herein.





2

Leveling grout usually not required if blockout was formed true and level to satisfy expansion joint system depth.

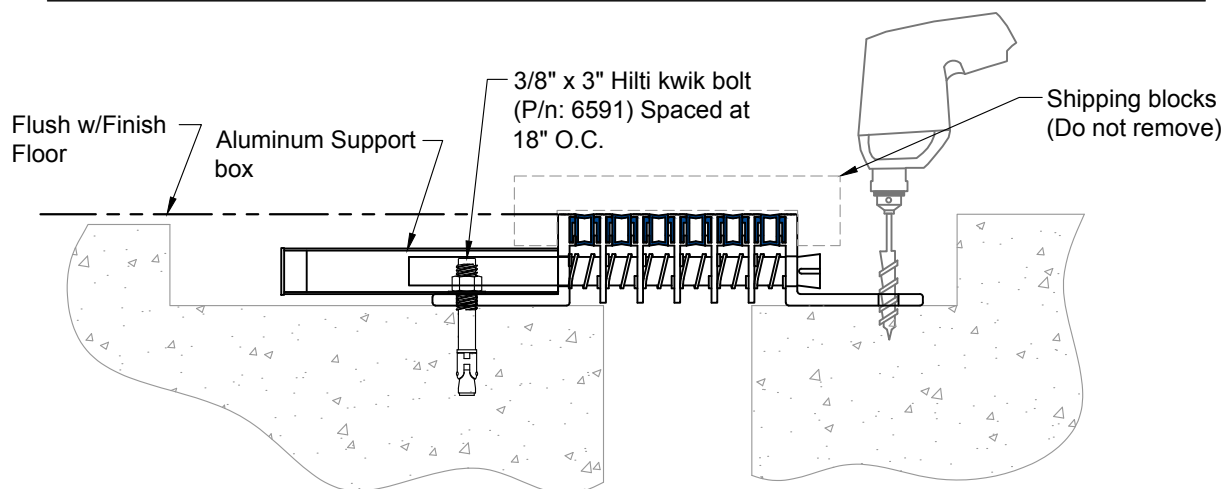


Center VIP expansion control system over opening. Mark anchor locations at 18" O.C.

3

Note:

1. If project requires corner installation orient support box opposite wall side.
2. If installed with corner condition in same run do not center over opening, adjust so edge is aligned with corner system.



4

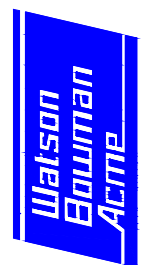
Floor to Floor Condition:

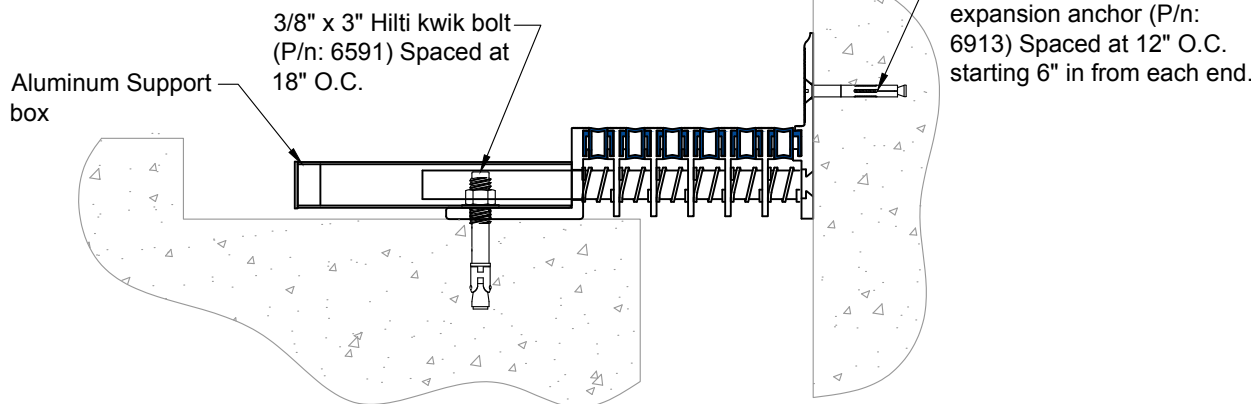
After Step 3 has been completed, mark anchor locations and follow Hilti recommendations for proper anchor installation.

Note: After VIP expansion control system has been fastened, shipping blocks can now be removed.

Installation procedure: VIP system

Watson Bowman Acme Corp. reserves the right to amend or withdraw any information contained herein without notice and will not be responsible for any inaccuracy or ambiguity of any information contained herein.



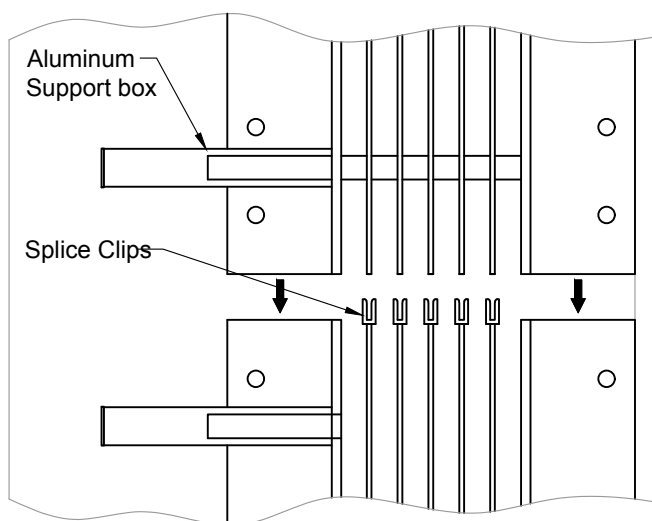


4A

Floor to Wall Condition:

After Step 3 has been completed, mark anchor locations for base angle and aluminum wall mount bracket. Follow Hilti recommendations for proper anchor installation.

Note: After VIP expansion control system has been fastened, shipping blocks can now be removed.



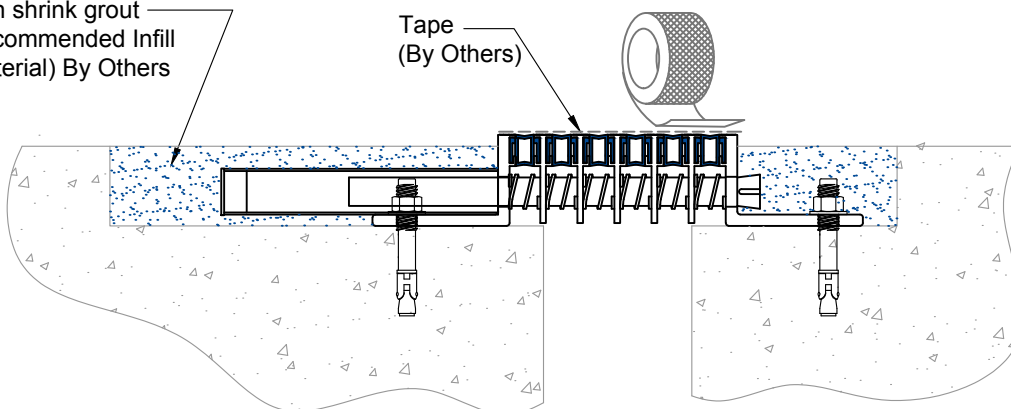
5

Splice Condition:

After installing a section of VIP, align the next section of expansion joint so that the vertical support bars align with the splice clips welded on the end. Once systems have been aligned, refer to Step 4 for fastening system to the blockout.

Non shrink grout
Recommended Infill
material) By Others

Tape
(By Others)

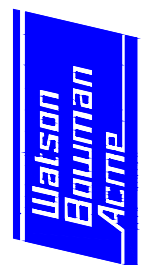


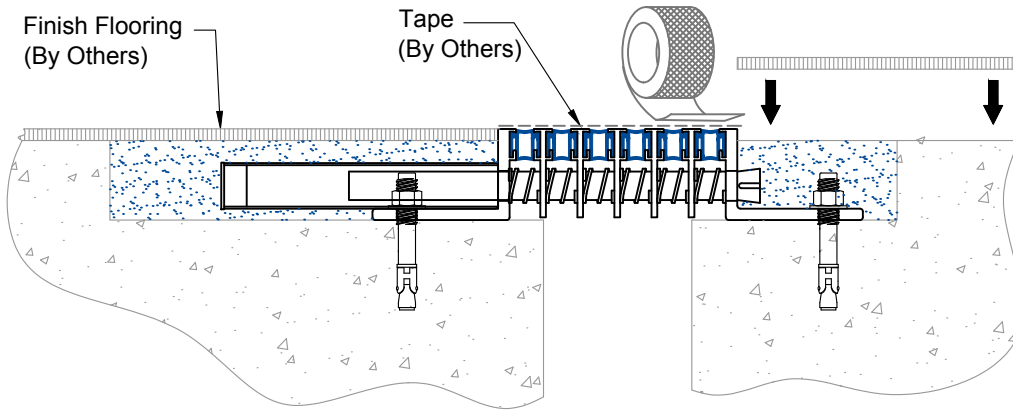
6

Tape and protect exposed metal surfaces and seals during placement of filler material. Fill blockout with high quality non-shrink cementitious filler material. Remove tape immediately after concrete placement.

Installation procedure: VIP system

Watson Bowman Acme Corp. reserves the right to amend or withdraw any information contained herein without notice and will not be responsible for any inaccuracy or ambiguity of any information contained herein.





7

Following manufacturers installation procedures install finish flooring materials. Ensure flush installation with top of expansion joint system.

Note: Protect expansion joint finish during installation of finish flooring materials. Also keep protection on expansion joint system during construction activities. Avoid construction vehicles of any kind from coming in contact with Wabo®VIP.

Installation procedure: VIP system

Watson Bowman Acme Corp. reserves the right to amend or withdraw any information contained herein without notice and will not be responsible for any inaccuracy or ambiguity of any information contained herein.

