



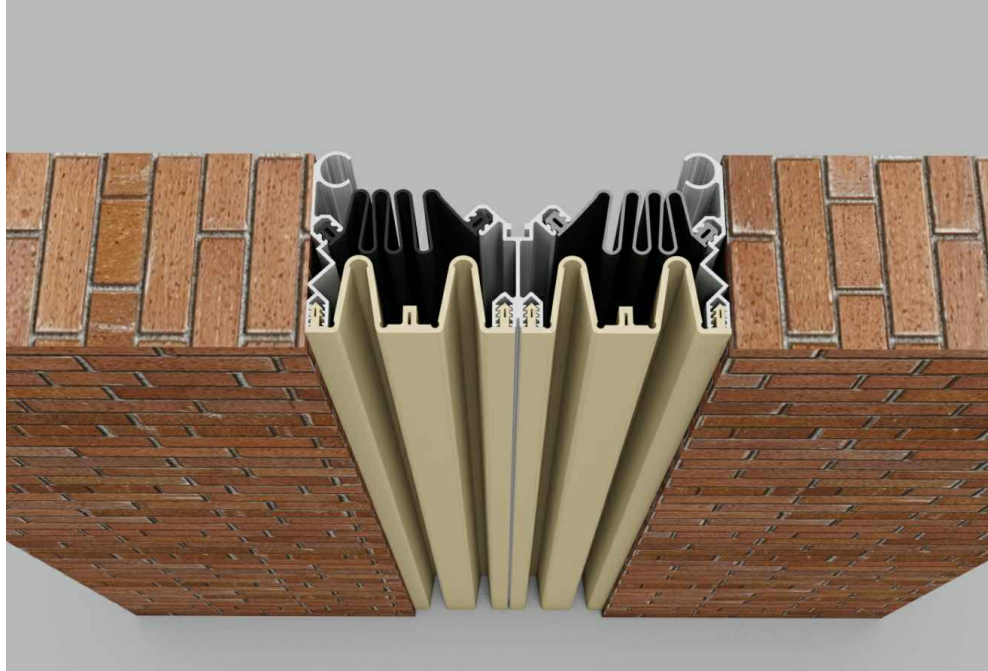
# Installation Procedure

Watson Bowman Acme 95 Pineview Drive Amherst, NY 14228

phone: (716) 691-7566 fax: (716) 691-9239

[www.watsonbowmanacme.com](http://www.watsonbowmanacme.com)

Information provided herein, including but not limited to, any drawing, design, photograph, graphic, or statement(s) ("Materials") are proprietary and the property of Watson Bowman Acme ("Company"). Reproduction, translation, or reduction to any electronic medium or machine readable form, in whole or part, is strictly prohibited, except for the express purpose for which it has been furnished, without prior written consent of Company. All Materials contained herein are provided by Company for information purposes only. Company reserves the right to amend or withdraw any information contained in the Materials without notice. All technical or other advice by Company, whether verbal or written, concerning products, or the use of products in specific situations ("Advice") is given by Company and is used at the Users own risk.



## Wabo®WeatherSeam Model(s) "WSW 800, 1000 & 1200" Horizontal & Vertical Expansion Control Systems

The following installation procedure is very important and must be fully understood prior to beginning any work. To ensure proper installation and performance of expansion joint system the following actions must be completed by the installing contractor. **Failure to do so will affect product warranty.**

- 1) Carefully read and understand installation procedure. Contact WBA's Technical Service Department at (800) 677-4922 for product assistance.
- 2) Inspect all shipments and materials for missing or damaged components and hardware. Contact Customer Service at (800) 677-4922 with WBA's order number and invoice for prompt assistance.
- 3) Inspect substrate or adjacent construction for acceptance before beginning work. Report unacceptable construction to the project manager for scheduled repair work.
- 4) Review WBA shop drawings for project specific detailed information if Engineering services were purchased at time of order.

Issued: 05/12/2021

p/n: 20198

## Standard Components

\* 1/4" x 2 1/2" Screw Anchor  
(P/N - 5782)

1/4" Dia x 2" Bolt  
(P/N - 4837)

\* Plastic Insert  
(P/N - 5786)

Wall Mount Aluminum  
Extrusion (Exterior)  
(P/N - 1296)

Aluminum Center Profile  
(Exterior)  
(P/N - 1293)

Moisture Barrier  
(P/N - 1175)

Aluminum Center Profile  
(Interior)  
(P/N - 1294)

#10-24 x 1/2" Lg Csk. Screw  
(P/N - 5573)



\* PP Primer  
(P/N - 2717)

\* 90° Rail Splice Plate  
Aluminum  
(Supplied by Others)

\* 90° Horiz. Rail Splice  
Plate Aluminum  
(Supplied by Others)

Wall Mount Aluminum  
Extrusion (Interior)  
(P/N - 1295)

NP-1 Sealant (P/N - 2826)



Horiz. to Vert. Splice Clip  
\* Seal only (P/N: 1194)

\* Butt Splice Clip  
Seal only (P/N: 1192)



Horiz. to Horiz. Splice Clip  
\* Seal only (P/N: 1193)



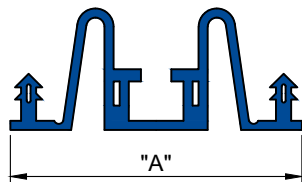
\* Butt Rail Splice  
Plate Aluminum  
(Supplied by Others)



\* 241F Adhesive  
(P/N - 2716)

\* Optional Components for Splice Procedures. Place order for required Quantities

Components shown below vary in size depending  
on model of system



Elastomeric Visual Seal

Dimension Chart & Part Number		
Model	"A"	Part Number
WSW-800	4"	1342
WSW-1000	5"	1262
WSW-1200	6"	1362



Self-Centering Bar

Dimension Chart & Part Number		
Model	"B"	Part Number
WSW-800	1'-6 3/8"	15630
WSW-1000	1'-10 3/8"	15631
WSW-1200	2'-2 3/8"	15603

Sheet  
1  
of 8

Watson Bowman Acme  
95 Pineview Drive Amherst, NY 14228  
phone: (716) 691-7566 fax: (716) 691-9239  
www.watsonbowmanacme.com

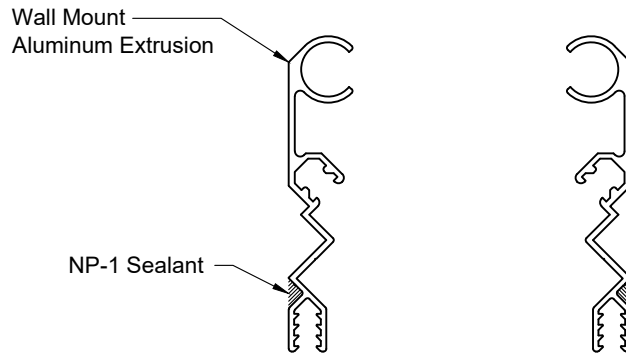
Installation procedure: WSW WeatherSeam 2 Seal system

Information provided herein, including but not limited to, any drawing, design, photograph, graphic, or statement(s) ("Materials") are proprietary and the property of Watson Bowman Acme ("Company"). Reproduction, translation, or reduction to any electronic medium or machine readable form, in whole or part, is strictly prohibited, except for the express purpose for which it has been provided. Watson Bowman Acme reserves the right to modify its products and specifications without notice. All technical or other advice by Company, whether verbal or written, concerning products, or the use of products in specific situations ("Advice") is given by Company and is used at the Users own risk.

**Watson  
Bowman  
Acme**

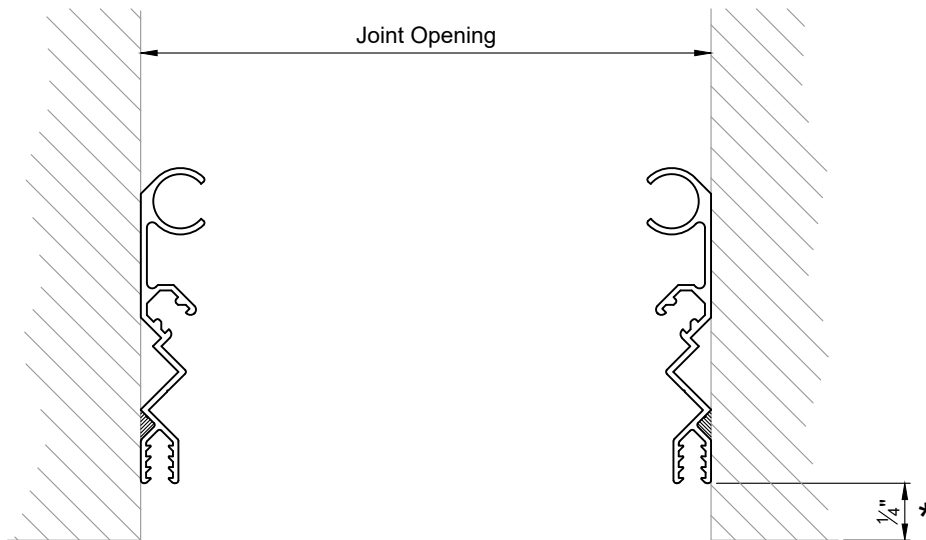
## Flush Condition

**Note:** Review entire procedure before beginning. If step 7 is not possible due to limited space follow steps 5-7 first outside of joint opening, then do steps 1-4 and then install seals.



1

- Apply continuous bead of NP-1 Sealant along back of the aluminum extrusions prior to installation. (exterior only)



2

- Field measure all lengths and directional changes for aluminum extrusions to ensure their proper layout where required. Temporarily fix extrusions to wall surface in position as shown for field drilling operations.

\* Note: Always review architectural plans for specific project requirements

Sheet  
2  
of 8

Watson Bowman Acme  
95 Pineview Drive Amherst, NY 14228  
phone: (716) 691-7566 fax: (716) 691-9239  
www.watsonbowmanacme.com

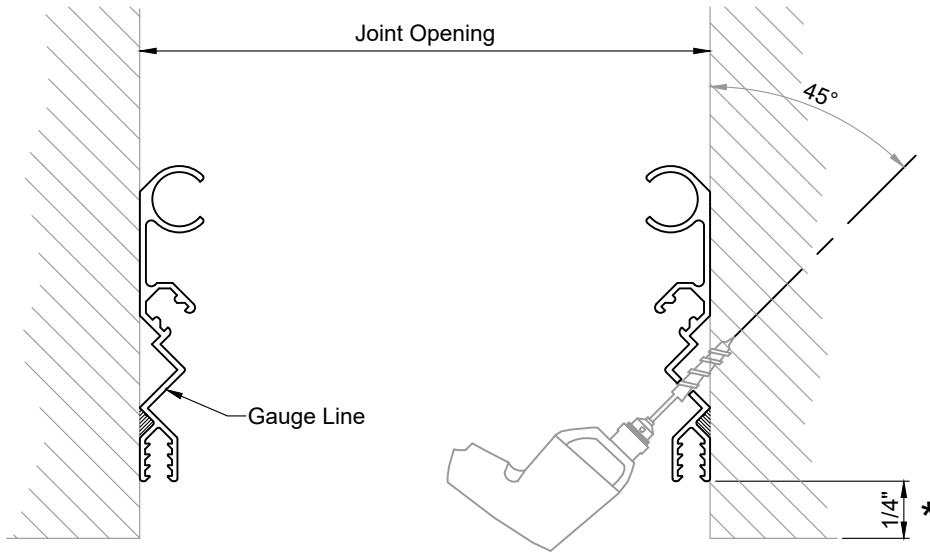
Installation procedure: WSW WeatherSeam 2 Seal system

Information provided herein, including but not limited to, any drawing, design, photograph, graphic, or statement(s) ("Materials") are proprietary and the property of Watson Bowman Acme ("Company"). All rights are reserved. No part of this document may be reproduced, stored in a retrieval system, or transmitted in any form or by any means, electronic, mechanical, photocopying, recording, or by any information storage and retrieval system, without prior written consent of Company. All Materials contained herein are provided by Company for information purposes only. Company reserves the right to amend or withdraw any information contained in the Materials without notice. All technical or other advice by Company, whether verbal or written, concerning products, or the use of products in specific situations ("Advice") is given by Company and is used at the Users own risk.



## Installation procedure: WSW WeatherSeam 2 Seal system

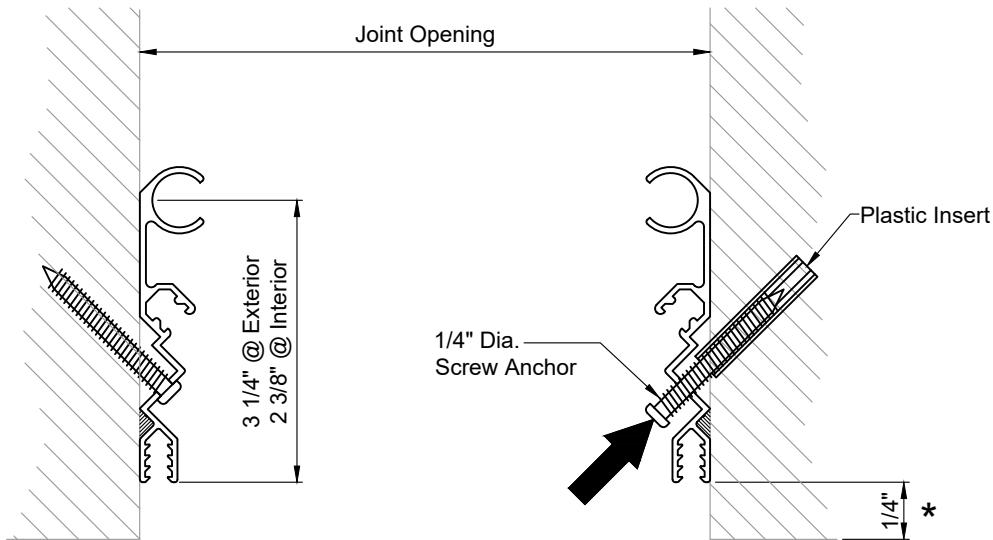
Information provided herein, including but not limited to, any drawing, design, photograph, graphic, or statement(s) ("Materials") are proprietary and the property of Watson Bowman Acme ("Company"). Reproduction, translation, or reduction to any electronic medium or machine readable form, in whole or part, is strictly prohibited, except for the express purpose for which it has been provided. No warranty is made by the Company for the use of the Materials for any purpose other than that for which they were intended. The Company reserves the right to modify the Materials without notice. All technical or other advice by Company, whether verbal or written, concerning products, or the use of products in specific situations ("Advice") is given by Company and is used at the Users own risk.



**3**

- Field drill anchor holes at 18" O.C. (Max) along aluminum gauge line. Drill through aluminum into adjacent construction on a 45° angle.

Note: All mortar joints in exterior walls must be flush with face of masonry to ensure tight weather seal.



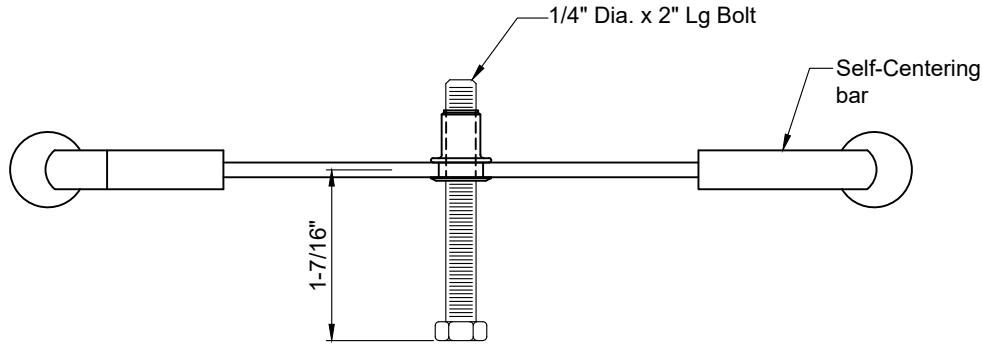
**4**

- Secure aluminum extrusions using appropriate anchors supplied by manufacturer.

Note: Utilize plastic inserts for securing Aluminum Extrusions to wall, if wall construction is either CMU or a Masonry wall.

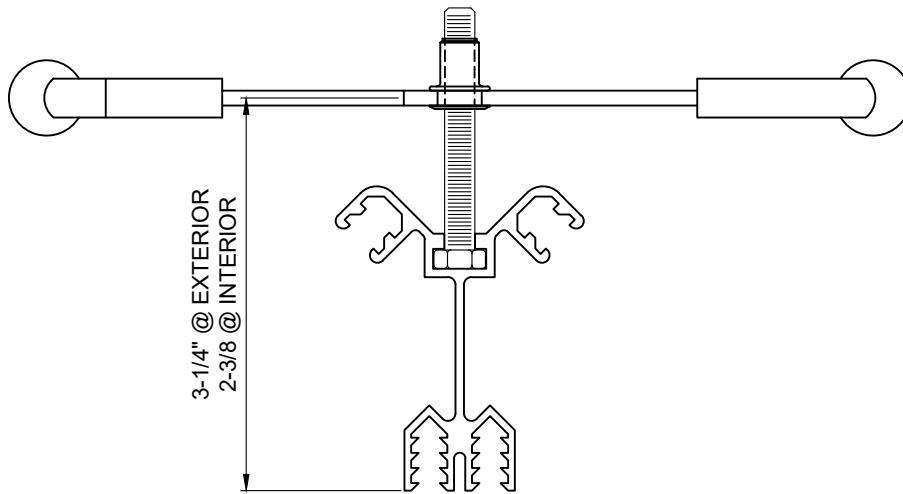
**5**

- Thread 1/4" dia. Bolt thru self-centering bar to achieve dimension shown.



**6**

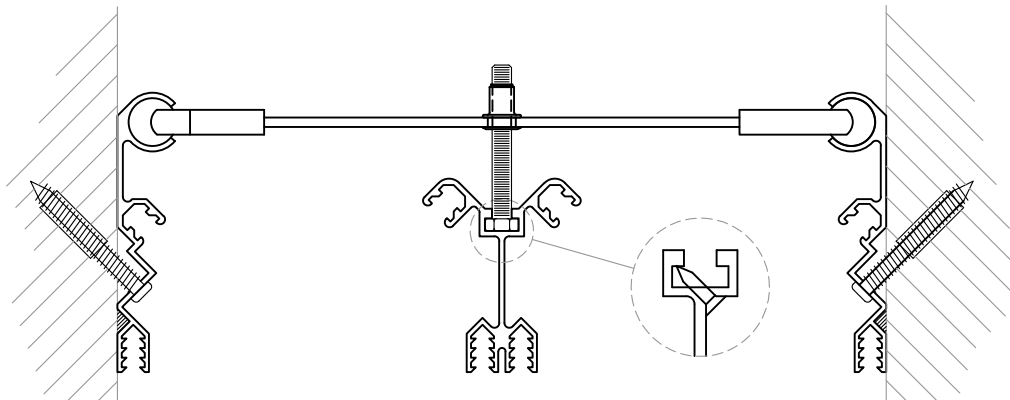
- Slide bolt into the center extrusion spaced at 18" O.C. Adjust self-centering bar to achieve dimensions indicated.



**7**

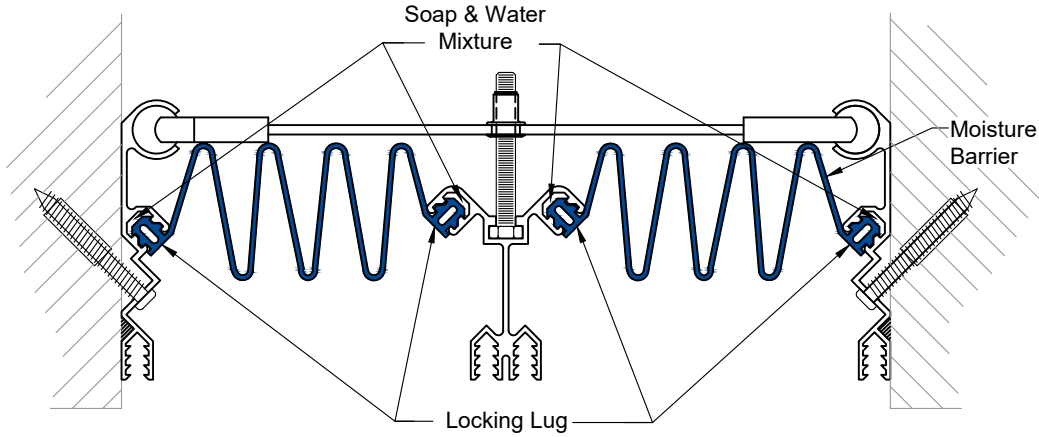
- Set center extrusion with self-centering bars into joint opening sliding the spheroid ends of the bars into the circular cavity of the edge extrusions. Adjust bars to correct spacing (18" O.C.) one at a time and drill in the #10 - 24 x 1/2" csk flat head self tapping screw into the center extrusion bolt cavity below the bolt head at proper spacing to hold self-centering bars in place.

Note: If area to perform step 7 is limited refer to the general note on page 2 on optional method of assembly.



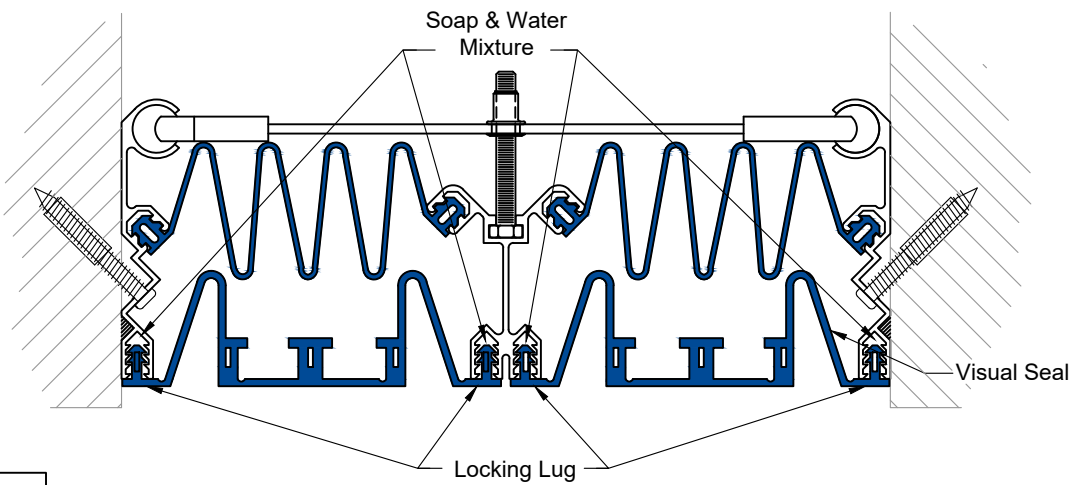
Installation procedure: WSW WeatherSeam 2 Seal system

Information provided herein, including but not limited to, any drawing, design, photograph, graphic, or statement(s) ("Materials") are proprietary and the property of Watson Bowman Acme ("Company"). No part of this document may be reproduced, stored in a retrieval system, or transmitted in any form or by any means, electronic, mechanical, photocopying, recording, or by any information storage and retrieval system, without prior written consent of Company. All Materials contained herein are provided by Company for informational purposes only. Company reserves the right to amend or withdraw any information contained in the Materials without notice. All technical or other advice by Company, whether verbal or written, concerning products, or the use of products in specific situations ("Advice") is given by Company and is used at the Users own risk.



**8**

- Brush apply a Soap & Water Mixture into extrusion cavity and install functional seals/moisture barriers. Ensure full engagement of the lug.

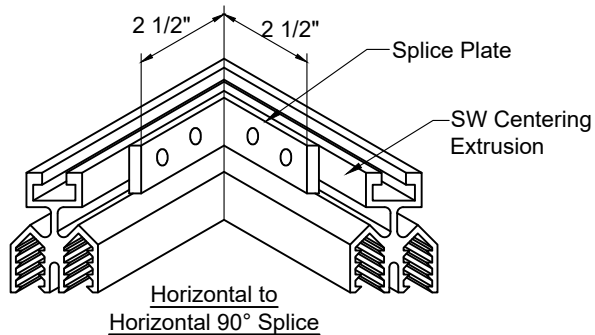
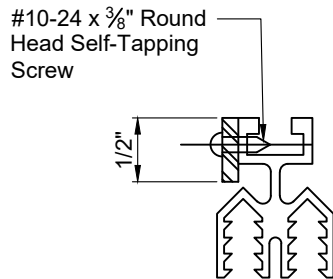
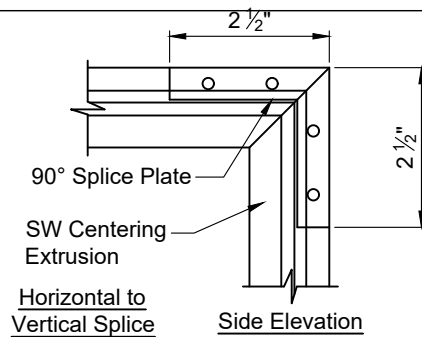
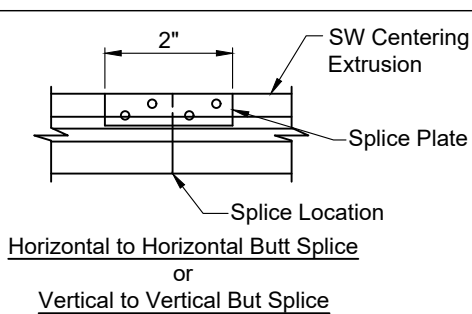


**9**

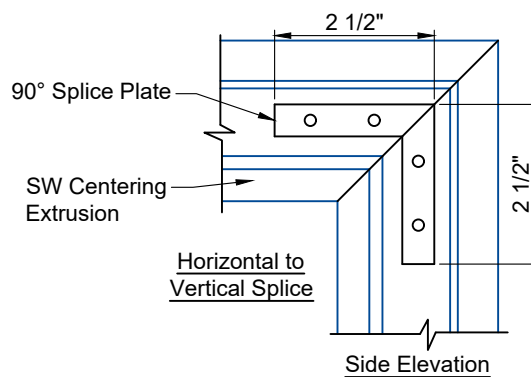
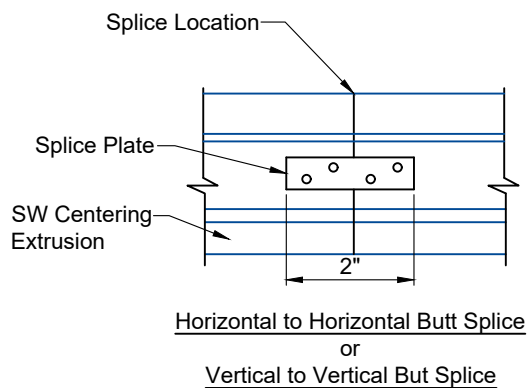
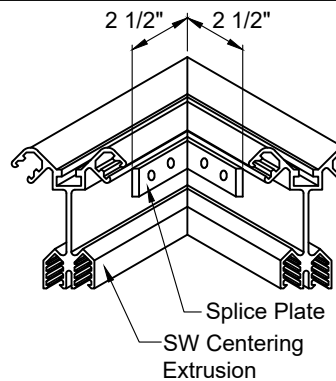
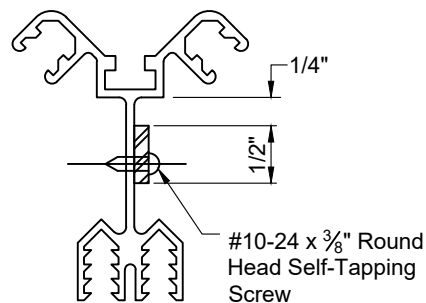
- Brush apply a Soap & Water mixture into extrusion cavity and install visual seals. Ensure full engagement of the lug.

**Installation procedure: WSW WeatherSeam 2 Seal system**

Information provided herein, including but not limited to, any drawing, design, photograph, graphic, or statement(s) ("Materials") are proprietary and the property of Watson Bowman Acme ("Company"). Reproduction, translation, or reduction to any electronic medium or machine readable form, in whole or part, is strictly prohibited, except for the express purpose for which it has been provided. No warranty is made by the Company, whether verbal or written, concerning products, or the use of products in specific situations ("Advice") is given by Company and is used at the Users own risk.



## Interior Extrusion Splice Details



## Exterior Extrusion Splice Details

Sheet  
**6**  
of 8

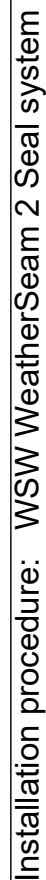
Watson Bowman Acme  
95 Pineview Drive Amherst, NY 14228  
phone: (716) 691-7566 fax: (716) 691-9239  
www.watsonbowmanacme.com

Installation procedure: WSW WeatherSeam 2 Seal system

Information provided herein, including but not limited to, any drawing, design, photograph, graphic, or statement(s) ("Materials") are proprietary and the property of Watson Bowman Acme Company ("Company"). Reproduction, translation, or use in any form without the express written permission of the Company is strictly prohibited. All Materials are provided by Watson Bowman Acme Company ("Company") as a guide only. The user assumes all responsibility for the use of the products in specific situations ("Advice") is given by Company and is used at the Users own risk.

**Watson  
Bowman  
Acme**

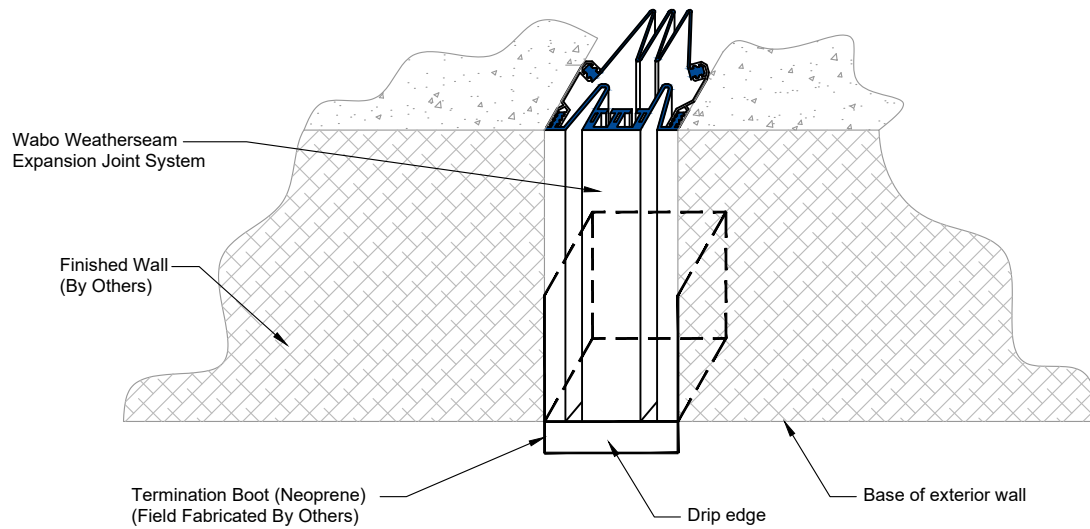




Information provided herein, including but not limited to, any drawing, design, photograph, graphic, or statement(s) ("Materials") are proprietary and the property of Watson Bowman Acme ("Company"). Reproduction, translation, or reduction to any electronic medium or machine readable form, in whole or part, is strictly prohibited, except for the express purpose for which it has been furnished, without prior written consent of Company. All Materials contained herein are provided by Company for informational purposes only. Company reserves the right to amend or withdraw any information contained in the Materials without notice. All Technical or other advice by Company, whether verbal or written, concerning products, or the use of products in specific situations ("Advice") is given by Company and is used at the User's own risk.

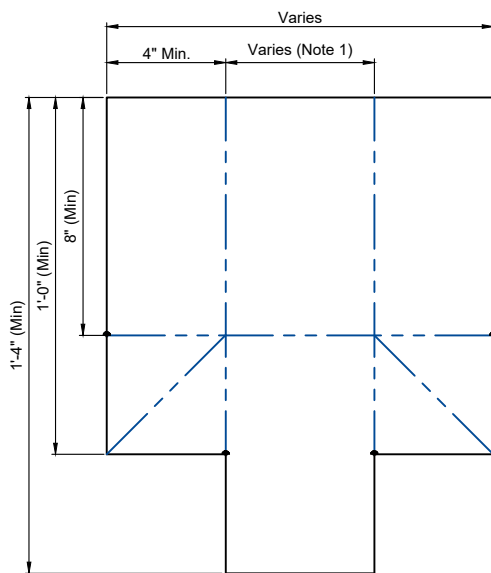
Used for direction changes, Going around corners, Parapets, Etc  
(Santoprene Only)





## "WSW" Termination Detail

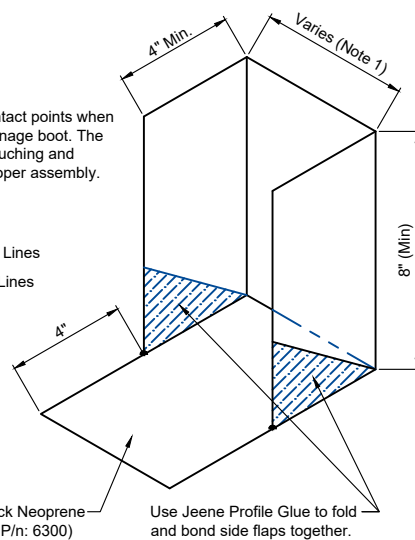
Can be used at the base of the WSW Seal Installation



• Represents Contact points when assembling drainage boot. The Dots must be touching and bonded for a proper assembly.

— = Fold Lines  
— = Cut Lines

Material: 1/32" Thick Neoprene Sheetgood. (WBA P/n: 6300)



### Installation procedure: WSW WeatherSeam 2 Seal system

Information provided herein, including but not limited to, any drawing, design, photograph, graphic, or statement(s) ["Materials"] are proprietary and the property of Watson Bowman Acme Company. Reproduction, in any form, without the express written permission of Watson Bowman Acme Company is prohibited. All Materials contained herein are for informational purposes only and are not intended to be used as a substitute for professional engineering or architectural advice. All Materials are subject to change without notice. Watson Bowman Acme Company reserves the right to amend or withdraw any information contained in the Materials without notice. All technical or other advice by Company, whether verbal or written, concerning products, or the use of products in specific situations ("Advice") is given by Company and is used at the Users own risk.

#### Notes:

1. Overall width of Boot Transition will be determined on the amount of movement the WSW system can accommodate during normal movement ranges. WBA suggests that the dimension will be at least Maximum Opening plus 1". This is to ensure that there will not be any damage to the boot while the system is at maximum opening.