



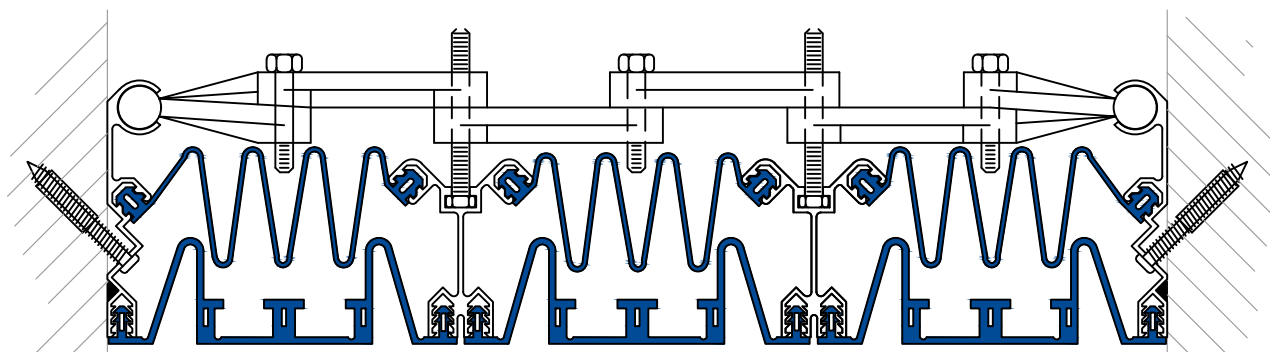
# Installation Procedure

Watson Bowman Acme 95 Pineview Drive Amherst, NY 14228

phone: (716) 691-7566 fax: (716) 691-9239

[www.watsonbowmanacme.com](http://www.watsonbowmanacme.com)

Information provided herein, including but not limited to, any drawing, design, photograph, graphic, or statement(s) ("Materials") are proprietary and the property of Watson Bowman Acme ("Company"). Reproduction, translation, or reduction to any electronic medium or machine readable form, in whole or part, is strictly prohibited, except for the express purpose for which it has been furnished, without prior written consent of Company. All Materials contained herein are provided by Company for information purposes only. Company reserves the right to amend or withdraw any information contained in the Materials without notice. All technical or other advice by Company, whether verbal or written, concerning products, or the use of products in specific situations ("Advice") is given by Company and is used at the Users own risk.



## Wabo®WeatherSeam Professional & Traffic Series Model(s) "WSW 900, 1500 & 1800" Horizontal & Vertical Expansion Control Systems

The following installation procedure is very important and must be fully understood prior to beginning any work. To ensure proper installation and performance of expansion joint system the following actions must be completed by the installing contractor. **Failure to do so will affect product warranty.**

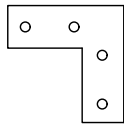
- 1) Carefully read and understand installation procedure. Contact WBA's Technical Service Department at (800) 677-4922 for product assistance.
- 2) Inspect all shipments and materials for missing or damaged components and hardware. Contact Customer Service at (800) 677-4922 with WBA's order number and invoice for prompt assistance.
- 3) Inspect substrate or adjacent construction for acceptance before beginning work. Report unacceptable construction to the project manager for scheduled repair work.
- 4) Review WBA shop drawings for project specific detailed information if Engineering services were purchased at time of order.

## Standard Components

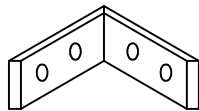
\*  $\frac{1}{4}$ " x 2  $\frac{1}{2}$ " Screw Anchor  
(P/N - 5782)

#10-24 x  $\frac{1}{2}$ " Lg Csk. Screw  
(P/N - 5573)

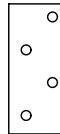
\* Plastic Insert  
(P/N - 5786)



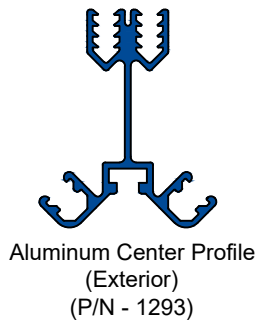
\* 90° Splice Plate  
Aluminum (by others)



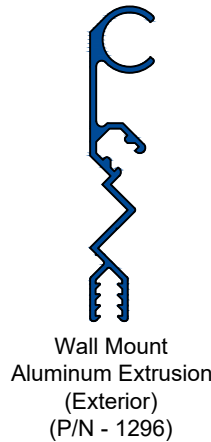
\* 90° Horiz. Splice Plate  
Aluminum (by others)



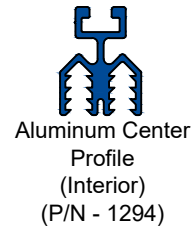
\* Butt Splice Plate  
Aluminum (by others)



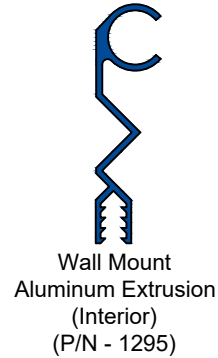
Aluminum Center Profile  
(Exterior)  
(P/N - 1293)



Wall Mount  
Aluminum Extrusion  
(Exterior)  
(P/N - 1296)



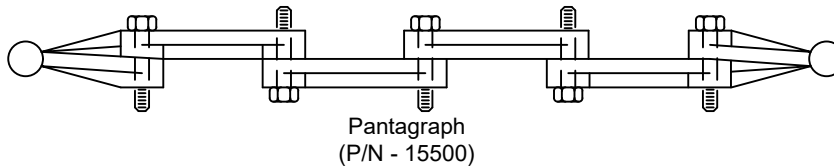
Aluminum Center  
Profile  
(Interior)  
(P/N - 1294)



Wall Mount  
Aluminum Extrusion  
(Interior)  
(P/N - 1295)



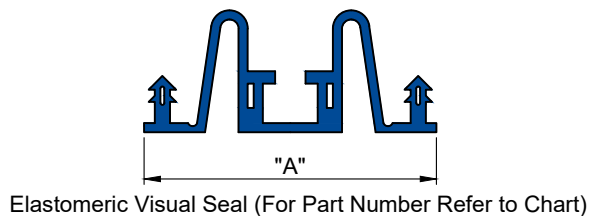
NP-1 Sealant  
(P/N - 2826)



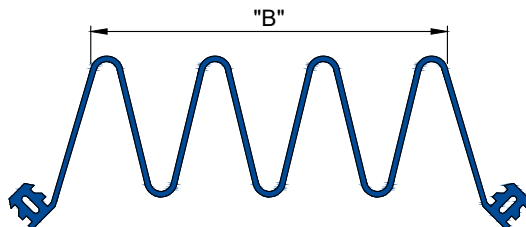
Pantagraph  
(P/N - 15500)

\* Optional Components for Splice Procedures. Place order for required Quantities

Components shown below vary in size depending  
on model of system



Elastomeric Visual Seal (For Part Number Refer to Chart)



Moisture Barrier (For Part Number Refer to Chart)

Dimension Chart & Part Number		
Model	"A"	Part Number
WSW-900	3"	1204
WSW-1500	5"	1262
WSW-1800	6"	1362

Dimension Chart & Part Number		
Model	"B"	Part Number
WSW-900	1 $\frac{3}{8}$ "	1181
WSW-1500	4 $\frac{1}{8}$ "	1175
WSW-1800	4 $\frac{1}{8}$ "	1175

Sheet  
1  
of 8

Watson Bowman Acme  
95 Pineview Drive Amherst, NY 14228  
phone: (716) 691-7566 fax: (716) 691-9239  
www.watsonbowmanacme.com

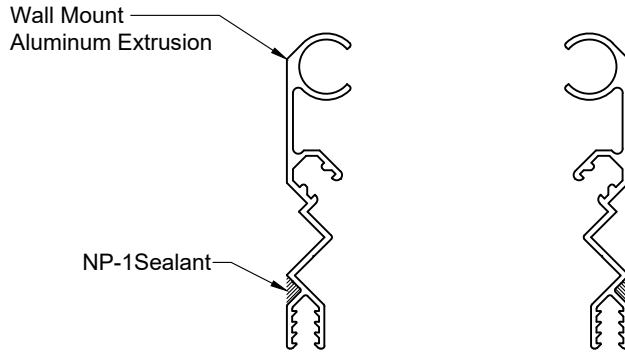
Installation procedure: WSW WeatherSeam system

Information provided herein, including but not limited to, any drawing, design, photograph, graphic, or statement(s) ("Materials") are proprietary and the property of Watson Bowman Acme ("Company"). Reproduction, translation, or reduction to any electronic medium or machine readable form, in whole or part, is strictly prohibited, except for the express purpose for which it has been provided. No warranty is made by the Company, whether verbal or written, concerning products, or the use of products in specific situations ("Advice") is given by Company and is used at the Users own risk.

**Watson  
Bowman  
Acme**

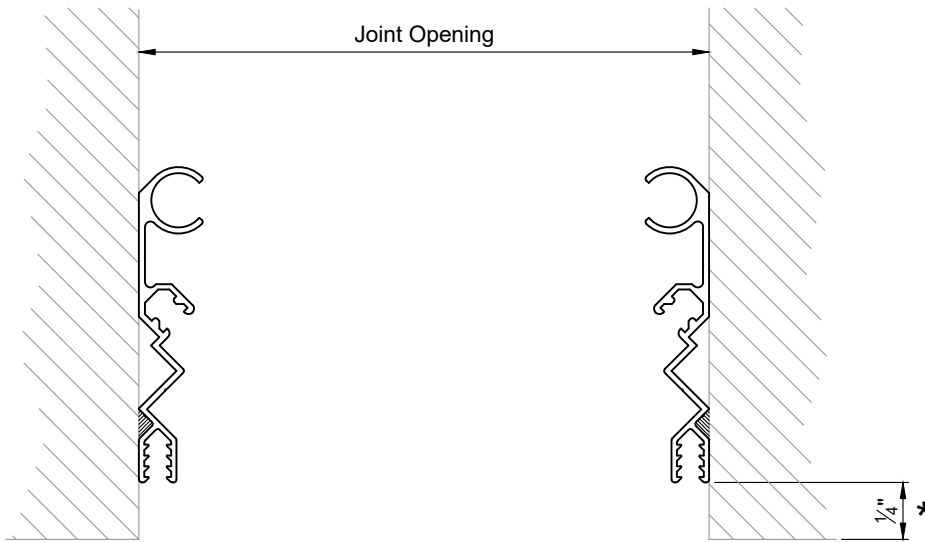
## Flush Condition

**NOTE:** Review entire procedure before beginning. If step 7 is not possible due to limited space follow steps 5-7 first outside of joint opening, then do steps 1-4 and then install seals.



1

- Apply continuous bead of NP-1 Sealant along back of the Aluminum Extrusions prior to installation. (Exterior Only)



2

- Field measure all lengths and directional changes for Aluminum Extrusions to ensure their proper layout where required. Temporarily fix Extrusions to wall surface in position as shown for field drilling operations.

\* Note: Always review architectural plans for specific project requirements

Sheet  
2  
of 8

Watson Bowman Acme  
95 Pineview Drive Amherst, NY 14228  
phone: (716) 691-7566 fax: (716) 691-9239  
www.watsonbowmanacme.com

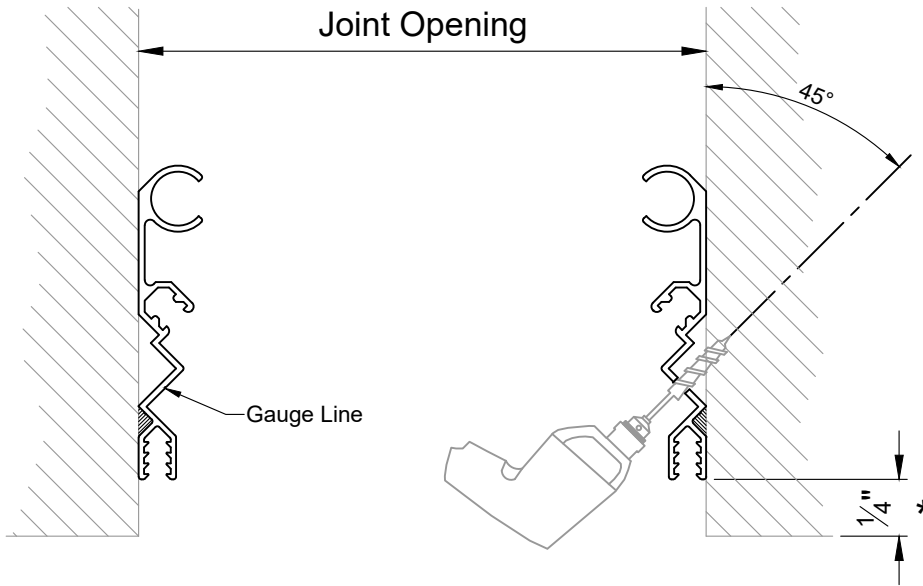
Installation procedure: WSW WeatherSeam system

Information provided herein, including but not limited to, any drawing, design, photograph, graphic, or statement(s) ("Materials") are proprietary and the property of Watson Bowman Acme ("Company"). Reproduction, translation, or reduction to any electronic medium or machine readable form, in whole or part, is strictly prohibited, except for the express purpose for which it has been furnished, without prior written permission in writing from Watson Bowman Acme. All rights are reserved. No part of this document may be reproduced, stored in a retrieval system, or transmitted in any form or by any means, electronic, mechanical, photocopying, recording, or by any information storage and retrieval system, without prior written permission in writing from Watson Bowman Acme. All technical or other services by Company are provided on an "as is" basis, without warranty, and the user assumes all liability for the use of the products in specific situations ("Advice") is given by Company and is used at the Users own risk.



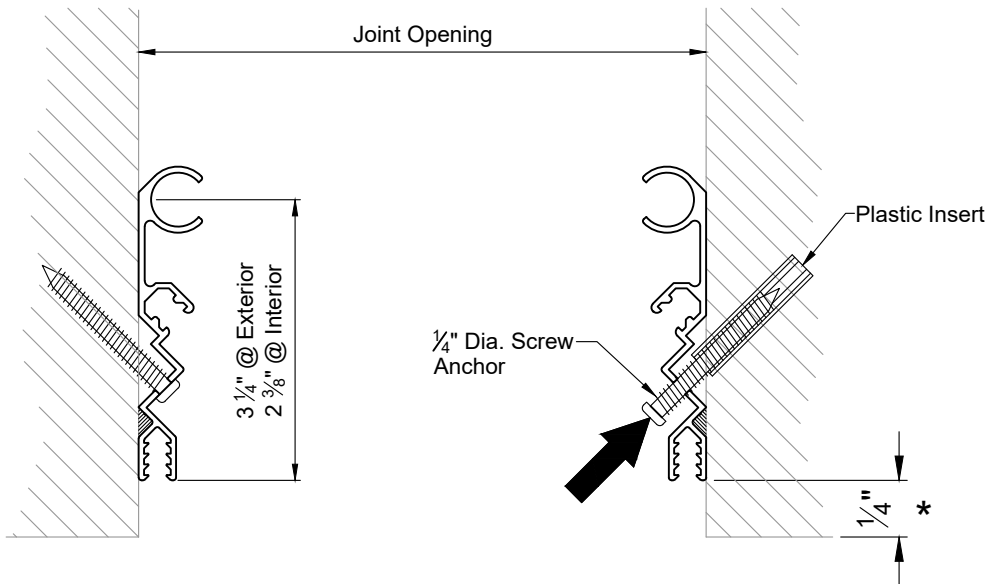
**Installation procedure: WSW WeatherSeam system**

Information provided herein, including but not limited to, any drawing, design, photograph, graphic, or statement(s) ("Materials") are proprietary and the property of Watson Bowman Acme ("Company"). No part of this information may be reproduced, stored in a retrieval system, or transmitted in any form or by any means, electronic, mechanical, photocopying, recording, or by any information storage and retrieval system, without prior written consent of Company. All Materials contained herein are provided by Company for informational purposes only. Company reserves the right to amend or withdraw any information contained in the Materials without notice. All technical or other advice by Company, whether verbal or written, concerning products, or the use of products in specific situations ("Advice") is given by Company and is used at the Users own risk.



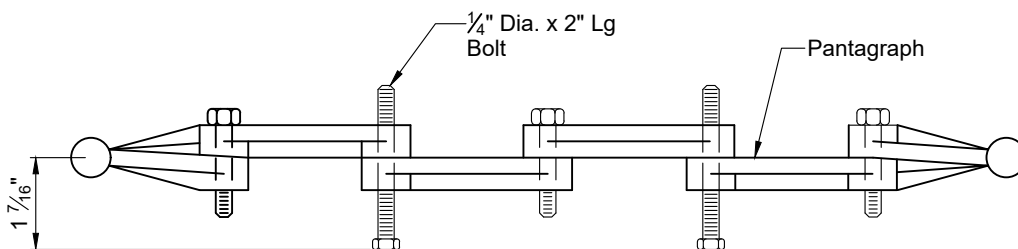
**3**

- Field drill anchor holes at 18" O.C. (Max) along aluminum gauge line. Drill through aluminum into adjacent construction on a 45° angle.  
Note: All mortar joints in exterior walls must be flush with face of masonry to ensure tight weather seal.



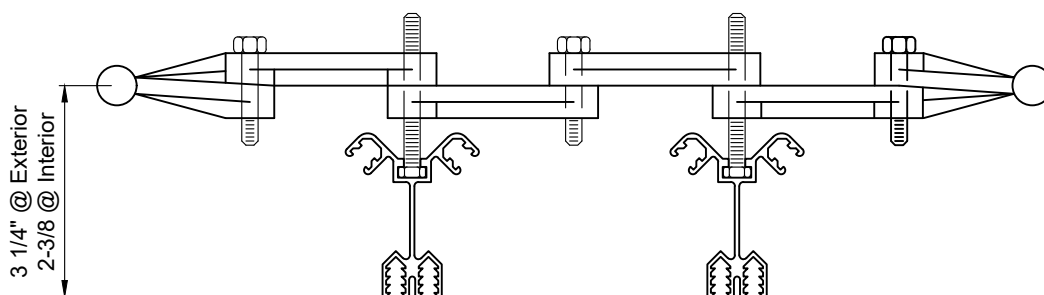
**4**

- Secure Aluminum Extrusions using appropriate anchors supplied by manufacturer.  
Note: Utilize plastic inserts for securing Aluminum Extrusions to wall, if wall construction is either CMU or a Masonary wall.



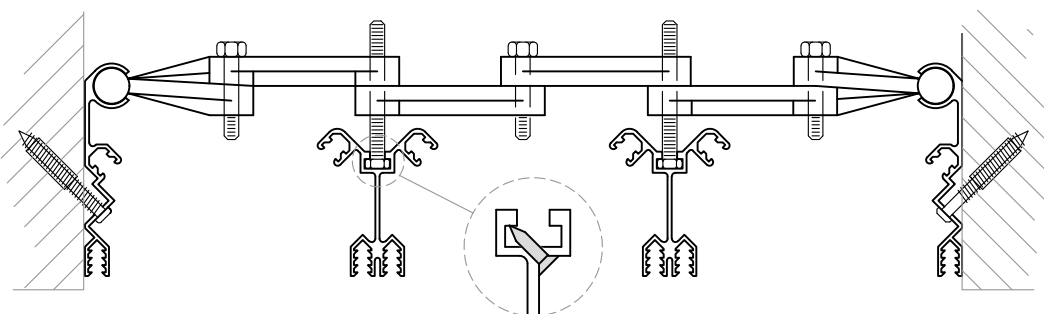
**5**

Adjust 1/4" Ø. Bolts on the Pantographs to achieve dimension shown.



**6**

Adjust bolts in Pantographs to achieve dimension show and slide bolt head into center extrusion cavity.



**7**

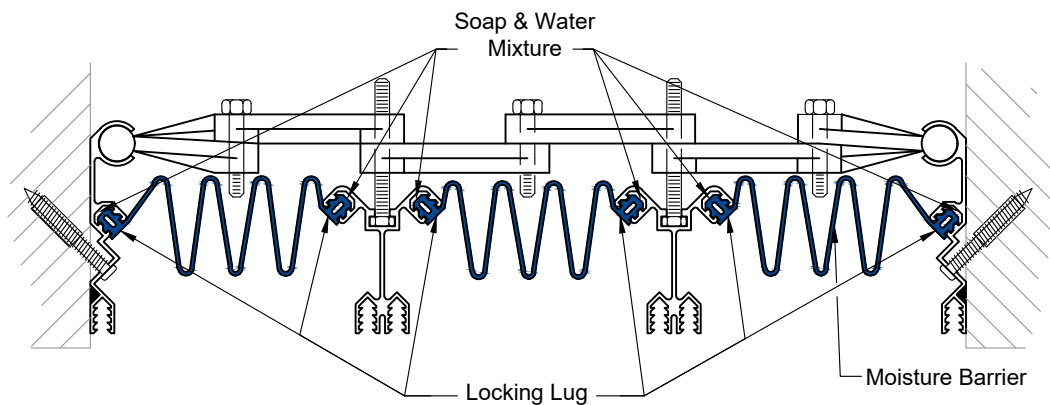
Set Center Extrusions with Pantographs into joint opening sliding the spherical ends of the Pantograph into the circular cavity of the edge Extrusions. Adjust Pantographs to correct spacing (30" O.C.) one at a time and drill in the # 10 -24 x 1/2" csk Flathead Self Tapping Screw into the Center Extrusion Bolt cavity below the bolt head at proper spacing to hold the Pantograph in place.

NOTE: If area to perform step 7 is limited, refer to the general Note on page 2 for optional method of assembly.

Installation procedure: WSW WeatherSeam system

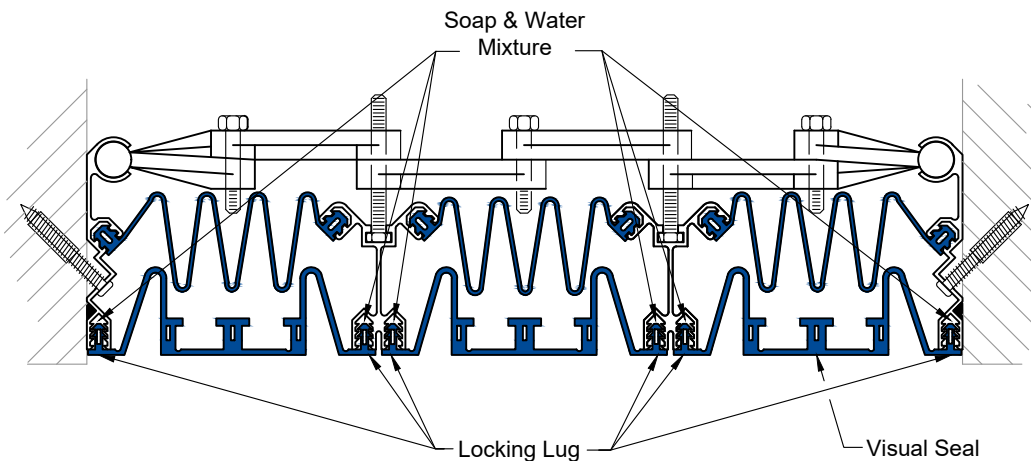
Information provided herein, including but not limited to, any drawing, design, photograph, graphic, or statement(s) ("Materials") are proprietary and the property of Watson Bowman Acme ("Company"). Reproduction, translation, or reduction to any electronic medium or machine readable form, in whole or part, is strictly prohibited, except for the express purpose for which it has been furnished, without prior written consent of Company. All Materials are provided by Company for informational purposes only. Company reserves the right to amend or modify the Materials without notice. All technical information is the property of Watson Bowman Acme. Company does not warrant the performance, reliability, or safety of the Materials or products, or the use of products in specific situations ("Advice") is given by Company and is used at the Users own risk.

**Watson  
Bowman  
Acme**



8

Brush apply a Soap & Water Mixture into extrusion cavity and install functional seals/Moisture Barriers. Ensure full engagement of the lug.



9

Brush apply a soap & water mixture into the extrusion cavity and install visual seals. Ensure full engagement of the lug.

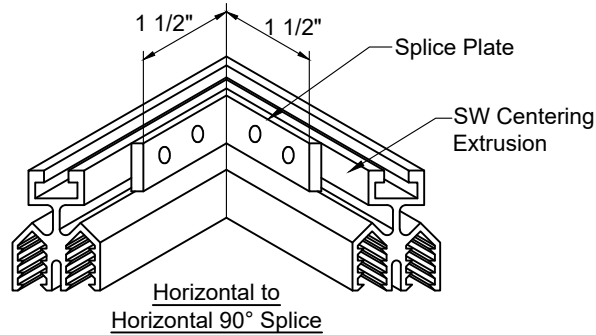
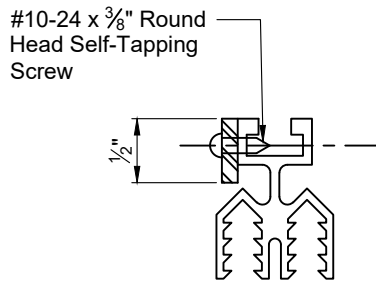
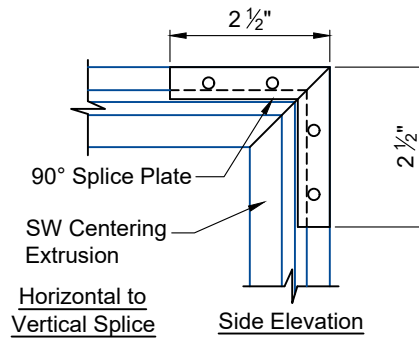
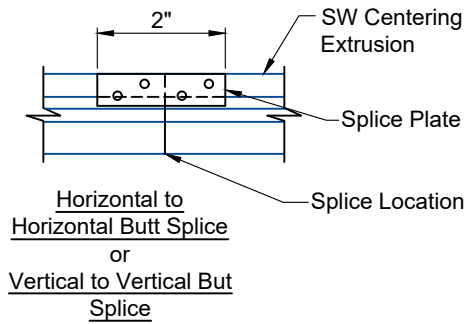
Sheet  
5  
of 8

Watson Bowman Acme  
95 Pineview Drive Amherst, NY 14228  
phone: (716) 691-7566 fax: (716) 691-9239  
www.watsonbowmanacme.com

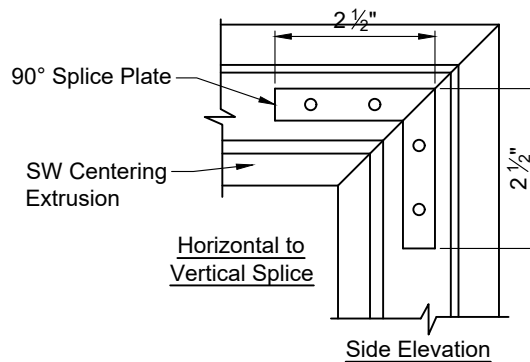
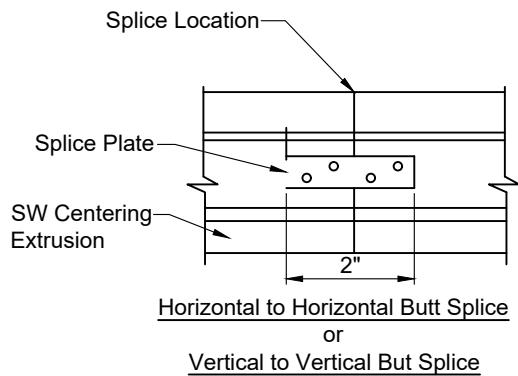
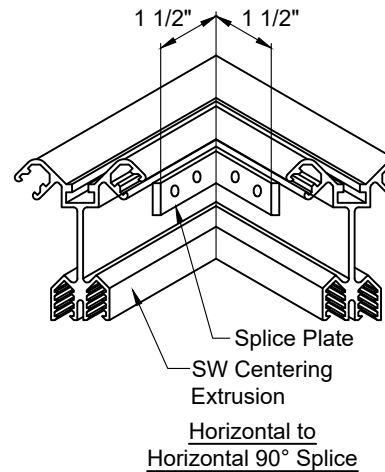
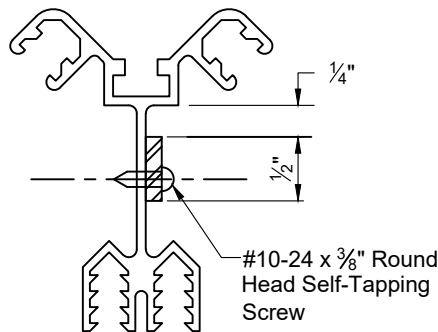
Installation procedure: WSW WeatherSeam system

Information provided herein, including but not limited to, any drawing, design, photograph, graphic, or statement(s) ("Materials") are proprietary and the property of Watson Bowman Acme ("Company"). Reproduction, translation, or reduction to any electronic medium or machine readable form, in whole or part, is strictly prohibited, except for the express purpose for which it has been furnished, without prior written consent of Company. All Materials contained herein are provided by Company for information purposes only. Company reserves the right to amend or withdraw any information contained in the Materials without notice. Technical or other advice by Company, whether verbal or written, concerning products, or the use of products in specific situations ("Advice") is given by Company and is used at the Users own risk.

**Watson  
Bowman  
Acme**



## Interior Extrusion Splice Details



## Exterior Extrusion Splice Details

Sheet  
**6**  
of 8

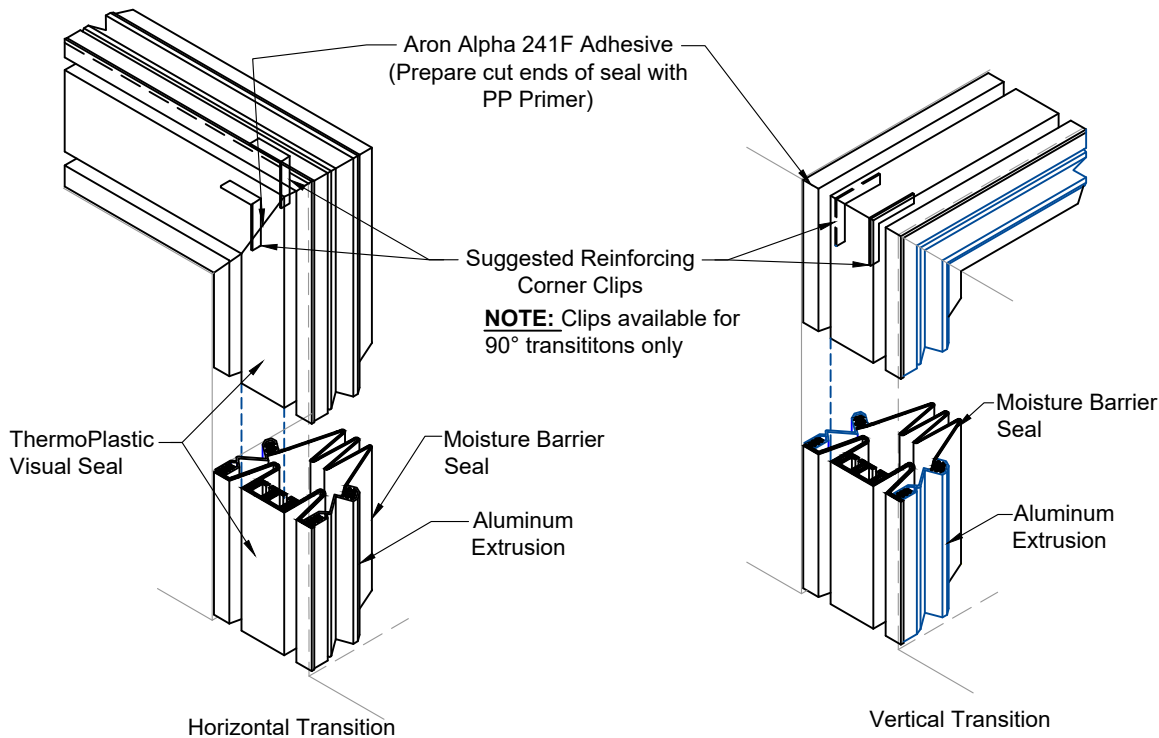
Watson Bowman Acme  
95 Pineview Drive Amherst, NY 14228  
phone: (716) 691-7566 fax: (716) 691-9239  
www.watsonbowmanacme.com

Installation procedure: WSW WeatherSeam system

Information provided herein, including but not limited to, any drawing, design, photograph, graphic, or statement(s) ("Materials") are proprietary and the property of Watson Bowman Acme ("Company"). Reproduction, translation, or reduction to any electronic medium or machine readable form, in whole or part, is strictly prohibited, except for the express purpose for which it has been furnished, without prior written consent of Company. All Materials contained herein are provided by Company for information purposes only. Company reserves the right to amend or withdraw any information contained in the Materials without notice or warning, concerning products, or the use of products in specific situations ("Advice") is given by Company and to be used at the Users own risk.

**Watson  
Bowman  
Acme**





## "WSW" Visual Seal Field Splice Procedures

Used for direction changes, Going around corners, Parapets, Etc  
(Santoprene Only)

1. Cut ends of the WSW visual seal, with a sharp knife, to the desired angle using a formed jig with miter box (supplied by contractor). Insure cuts are clean, straight and square.
2. Cleans ends of seal with a solvent to remove any foreign material.
3. Brush apply PP Primer to both seal ends to be joined together at splice.
4. Reassemble mitered ends of adjacent seals utilizing the reinforcing corner clips (for 90° transitions only).
5. Apply 241F adhesive as specified by the manufacturer to one of the two seal surfaces to be bonded.
6. Apply pressure bringing the two surfaces in tight contact immediately upon completing application of the adhesive. Hold in place for approximately one to two minutes to allow adhesion.
7. Re-check quality of all miters or splices and apply additional adhesive if required to ensure proper miter or splice.
8. Contact manufacturer for clarification of above procedure (if required) prior to proceeding with splicing visual seal profile. It is usually recommended to allow 15 minutes time before installing spliced seal. Care shall be excersised as a result that it takes 24 hours for adhesive to fully cure.

Installation procedure: WSW WeatherSeam 2 Seal system

Information provided herein, including but not limited to, any drawing, design, photograph, graphic, or statement(s) ("Materials") are proprietary and the property of Watson Bowman Acme Company ("Company"). Reproduction, translation, or use in any form without the express written permission of the Company is prohibited. All Materials are provided by Watson Bowman Acme Company ("Company") for use in the construction of products. The Company does not warrant the performance of the Materials in any situation. The Company reserves the right to modify the Materials without notice. All technical or other advice by Company, whether verbal or written, concerning products, or the use of products in specific situations ("Advice") is given by Company and is used at the Users own risk.

**Watson  
Bowman  
Acme**





Diagram illustrating the assembly of the Neoprene boot. The boot is shown in a 3D perspective view, highlighting the side flaps and the top edge. Key dimensions and instructions are provided:

- Top Edge Dimensions:** The top edge of the boot is labeled with "4" Min." and "Varies (Note 1)".
- Side Flap Dimensions:** The side flaps are labeled with "4" and "8" (Min)".
- Assembly Instructions:**
  - "Use Jeene Profile Glue to fold and bond side flaps together."
  - "Black Neoprene P/n: 6300"

1. Overall width of Boot Transition will be determined on the amount of movement the WSW system can accommodate during normal movement ranges. WBA suggests that the dimension will be at least Maximum Opening plus 1". This is to ensure that there will not be any damage to the boot while the system is at maximum opening.

---

---

Installation procedure: WSW WeatherSeam 3 Seal system

Information provided herein, including but not limited to, any drawing, design, photograph, graphic, or statement(s) ("Materials") are proprietary and the property of Watson Bowman Acme ("Company"). Reproduction, translation, or reduction to any electronic medium or machine readable form, in whole or part, is strictly prohibited, except for the express purpose for which it has been furnished, without prior written consent of Company. All Materials contained herein are provided by Company for information purposes only. Company reserves the right to amend or withdraw any information contained in the Materials without notice. All technical or other advice by Company, whether verbal or written, concerning products, or the use of products in specific situations ("Advice") is given by Company and is used at the Users own risk.