



SOLUTIONS FOR BRIDGE MAINTENANCE AND PRESERVATION



BUILDING TRUST



ENHANCE THE LIFE OF YOUR BRIDGE WITH RESPONSIBLE EXPANSION JOINT SOLUTIONS

Expansion joints are a critical link to the sustainability of a bridge. The effects of failing expansion joints or improper system selection will severely weaken structural integrity. Rely on Watson Bowman Acme for quality solutions as well as expert project support

SERVICES TO SUPPORT YOUR PROJECT NEEDS

Not an expansion joint expert? Luckily you don't have to be. Utilize our additional services to reduce labor costs and make sure the job is done right the first time.



1

Inspection Services



Partnering with Owners, Engineers, DOTs and local agencies to provide an objective assessment of joint conditions

2

Technical Services



Field training and on-site technical assistance readily available.

3

Estimating



Commitment to highly accurate quotations, quick turn-arounds and quicker takeoffs.

4

Engineering Support



Assessing unique conditions and offering custom solutions when the project calls for it

5

Order Management



In-house inventory and strategically located distribution partners paired with delivery/ freight options to fit your specific needs



UNIQUE TECHNOLOGIES FOR SPECIFIC CONDITIONS

Structural damage caused by increased loading, traffic congestion, chemical exposure, effects of the elements and the high cost of repairs has increased the demand simple, efficient maintenance and preservation solutions that can be handled at a local level.

** Indicates products that are often paired with WaboCrete® II Header technology*

HEADER AND SPALL REPAIR TECHNOLOGIES



WABOCRETE® II

Two-component polyurethane elastomeric header with a specialty aggregate, 100% solids material for use as a header/ nosing material

- Ozone, deicing chemical and abrasive resistant.
- Self-leveling, ambient cure material.
- Absorbs traffic impact loading.
- Each unit covers 0.6 cubic feet.



EMCRETE II

Polyurethane elastomeric header and spall repair by Sika Emseal

- Impact absorbing.
- Resists cracking.
- Durable under snowplowing.
- Fast-curing, Low odor, Low VOC.



WABO®SURFACEMEND

Epoxy polymer header designed for use on bridges, airports, and transit

- Able to be installed in damp conditions.
- Industry-leading compressive strength.
- Gray color may be used on airport runways. Multiple units can be mixed for large-batch volume jobs.

HEADER AND SPALL REPAIR TECHNOLOGIES

(continued)



SIKADUR® 72 JNS

Flexible, abrasion and impact resistant polymer mortar

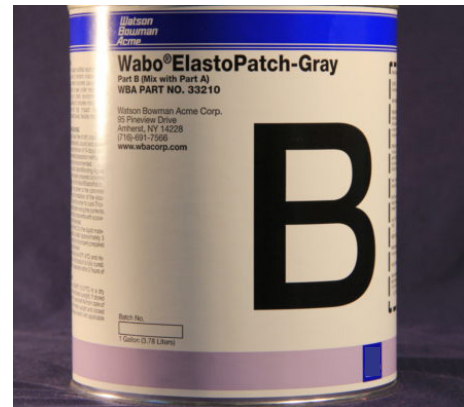
- Moisture-tolerant binder
- Fast-setting for quick turnaround
- No primer required
- Excellent bond to asphalt & concrete



SIKAPRANTO® 500 PPC

Polyester header for expansion joints and repair systems

- Return to traffic within 1.5-3 hours at temperatures of 40°F and rising.
- Low viscosity for easy mixing.
- Excellent adhesion to concrete.
- High early strength.



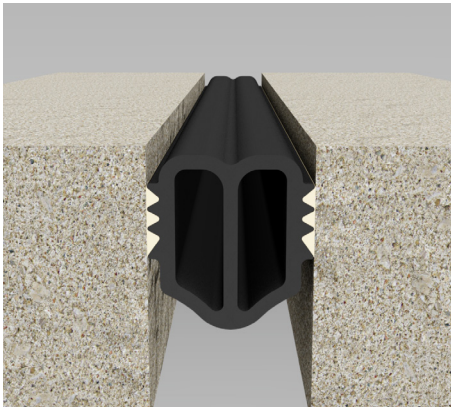
WABO® ELASTOPATCH

Elastomeric concrete for repair of random cracks and spalls in existing concrete

- Permanent repair to cracks and spalls.
- Ambient cured material that is mixed in 5 minutes and typically open to traffic in one hour.
- High load bearing and bonding capabilities accommodate heavy and repetitive impact loading.



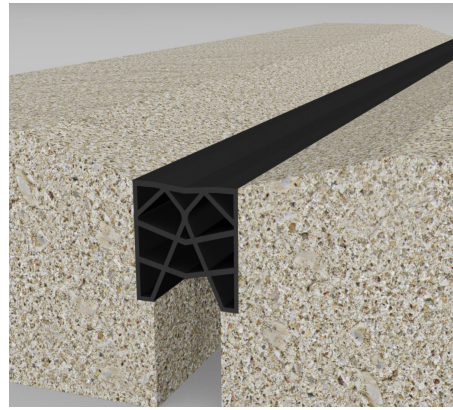
JOINT SEAL TECHNOLOGIES



JEENE®*

Watertight structural sealing joint system

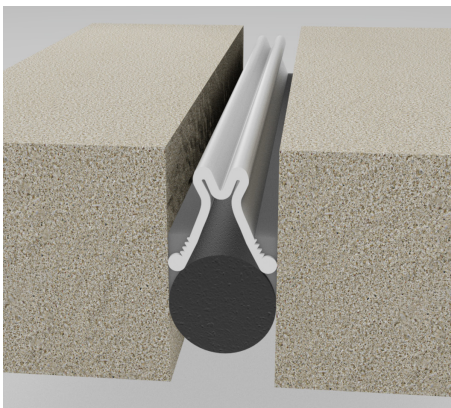
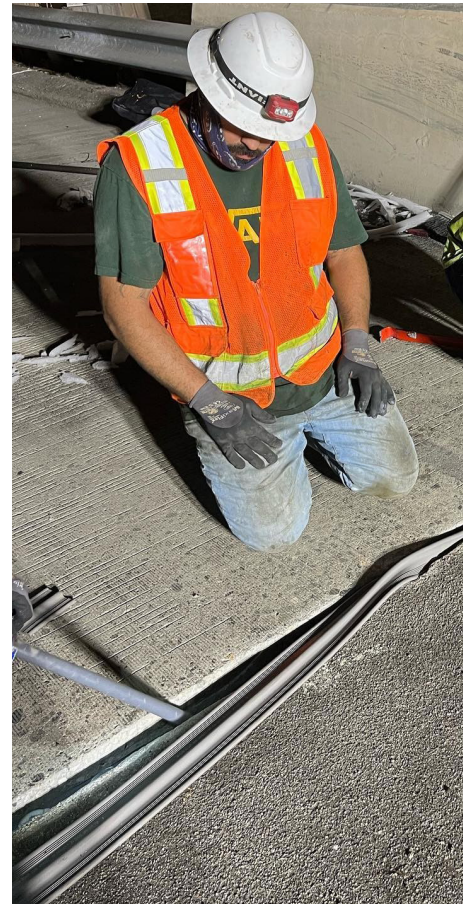
- Air pressurized epoxy bond.
- Watertight continuous seal.
- Chemical resistant neoprene.
- Accommodates complex miters.
- For movements +/-50%.



WABO®COMPRESSION SEAL

Preformed, neoprene elastic joint seal manufactured of neoprene and installed with a lubricant adhesive

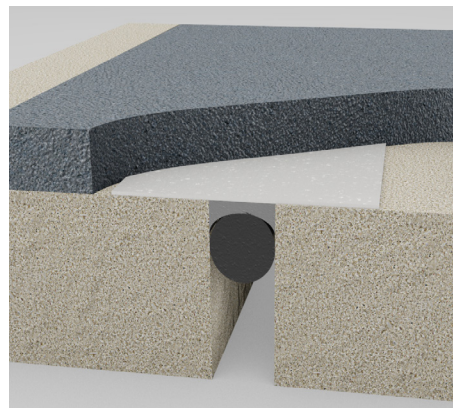
- Water resistant seal.
- 30 year proven history.
- Economical and simple to install.
- For joint openings up to 5"



WABO®SPS*

Watertight silicone joint seal accommodating varying joint

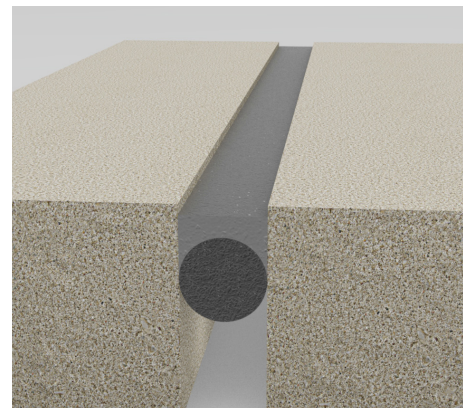
- Chemically inert and unaffected by exposure to UV light, weather or extreme temperatures.
- Allows for quick joint repairs and short traffic closures. No priming of the substrate required.
- Flexible, but high peel strength adhesives provide for assurance of watertight seal.
- For movements <1"-5".



WABO®EXPANDEX

One piece monolithic asphaltic plug joint system designed to eliminate the need for any anchoring device and provide a flexible yet smooth riding joint.

- Hot applied binder and aggregate eliminates need for mechanical anchors.
- Single pour application yields minimum traffic downtime.
- Low-cost system with smooth-top finish.
- For movements up to +/-0.75" at time of installation



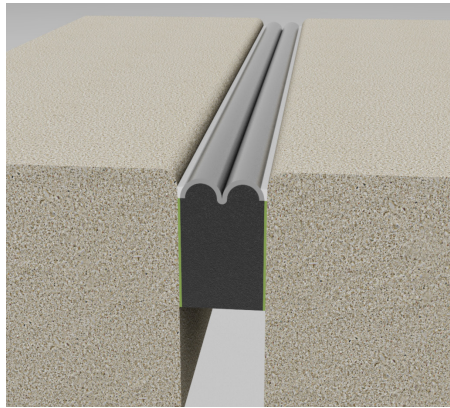
WABO®SILICONE SEAL*

High performance, two-part silicone sealant designed for a variety of horizontal expansion joint applications

- Rapid curing within 4 hours.
- No priming required.
- Quick Install using pneumatic double-piston gun.
- +100%/ -50% movement.



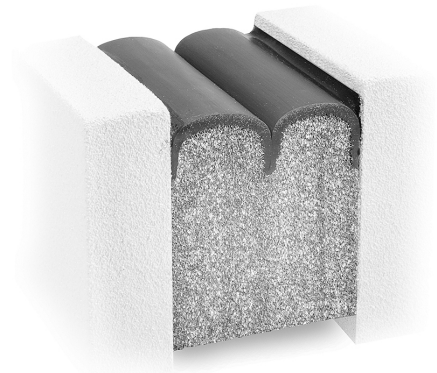
FOAM TECHNOLOGIES



WABO®FS BRIDGE SEAL*

Pre-compressed, foam-supported silicone bridge joint system

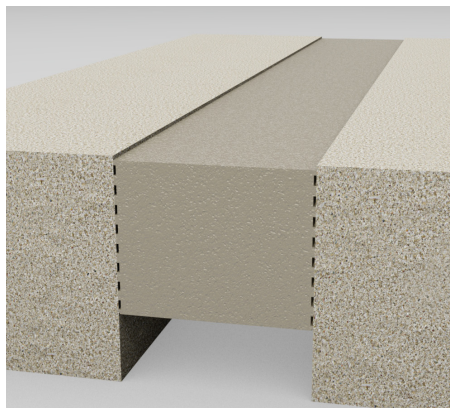
- Monolithic foam construction.
- Factory assembled joint transitions available.
- For movements +/- 60% movement.



BEJS BY SIKA EMSEAL*

Traffic-durable bridge and roadway expansion joint which provides a primary watertight seal

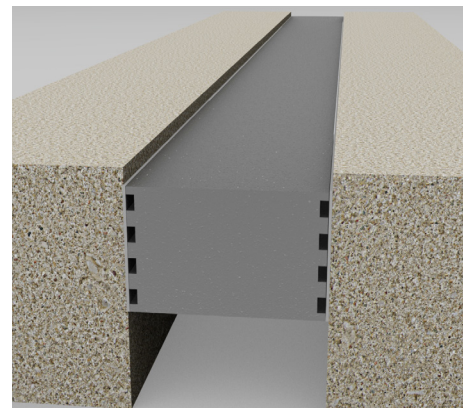
- Can accommodate movement of 90% of its nominal width, allowing 60% compression and 30% tension.
- Minimizes dirt and debris.
- Accommodates up to 10 feet of hydrostatic pressure.
- For joint openings up to 4".



WABO®EVAZOTE*

Low density closed cell ethylene vinyl acetate polyethylene Nitrogen blown joint seal

- Profile minimizes dirt and debris in the joint opening.
- Accommodates up to 10 feet of hydrostatic pressure.
- Working movement range of 60% compressions, 30% tension, 120% shear.

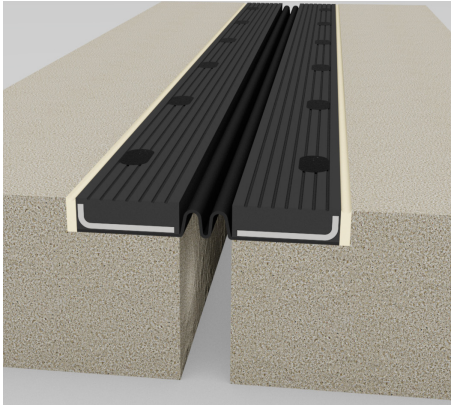


WABO®XPE

Pre-formed, impermeable, UV stable gray foam joint seal

- Resistant to abrasion, oxidation oils, gasoline and salts.
- Cells collapse and elongate during movement cycle so the seal does not get larger in cross section.
- Working range of 30% tension and 60% compression.

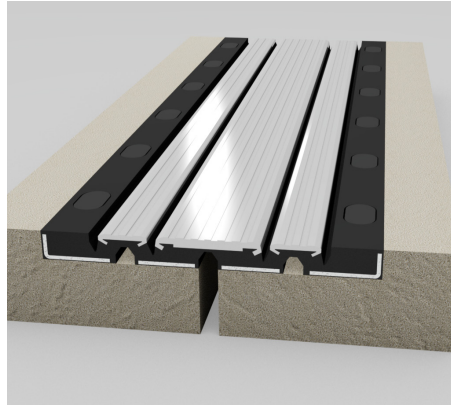
SEGMENTAL TECHNOLOGIES



WABO®ELASTOFLEX

High-quality elastomeric materials, featuring a continuous gland made of fabric-reinforced EPDM rubber

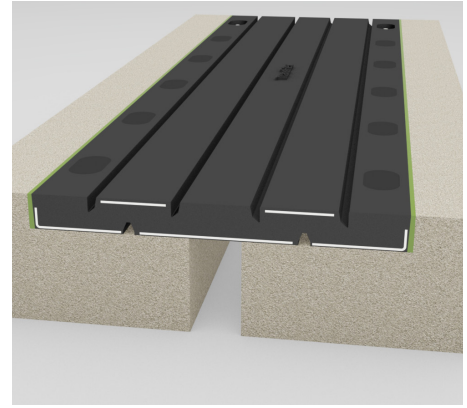
- Handles directional changes and joint skews.
- Water drainage for skid resistance.
- For joint openings up to 6”.



WABO®FLEX

Molded rubber cushion expansion joint system designed for heavy traffic and snowplow loading

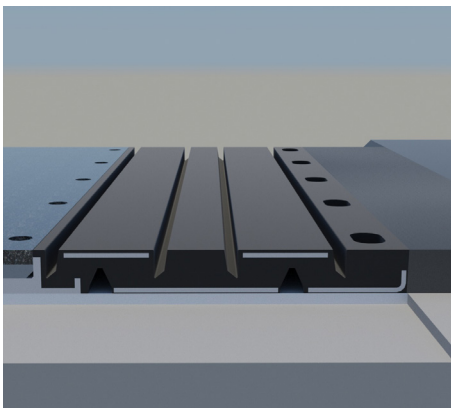
- Prevents accumulation of debris, ice and incompressible items.
- Combines the strength of steel and the flexibility of rubber.
- Steel reinforced rubber for durability.
- For movements up to 13”.



WABO®TRANSFLEX

The original-reinforced elastomeric molded rubber expansion joint system

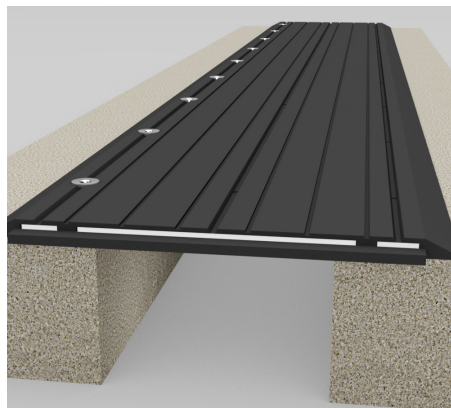
- Prevents accumulation of debris, ice and incompressible items. Provides a smooth riding surface.
- Combines the strength of steel and the flexibility of elastomer rubber.
- Steel reinforced elastomer adjusts to structural movement.
- For movements up to 13”.



WABO®MDM TRANSFLEX

Multi-directional movement (MDM) segmental plate designed to accommodate large differential displacements, rotations and service movements as well as seismic movements

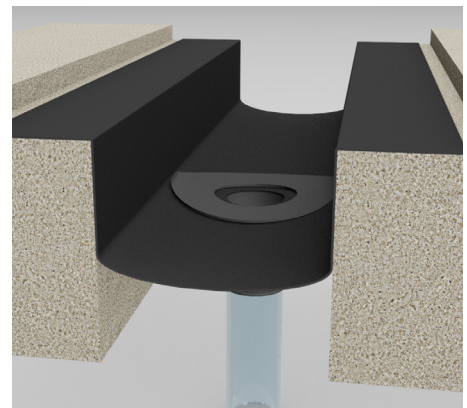
- Accommodates seismic movements.
- Each module covers half traffic lane reducing downtime.
- Maintains full functionality and able to carry traffic safely after a seismic event.
- For very large joint openings.



WABO®SAFETYFLEX

Elastomeric, ADA-compliant, hinged cover system that is ideal for pedestrian walkway areas as well as in low-speed vehicular traffic areas, including bridges

- Metal plates flex independently and provide a load bearing cover.
- Rubber encapsulated metal plates eliminates the loud noise.
- Lap-joint connectors allow for easy transitions between panels.
- Seismic model also available.



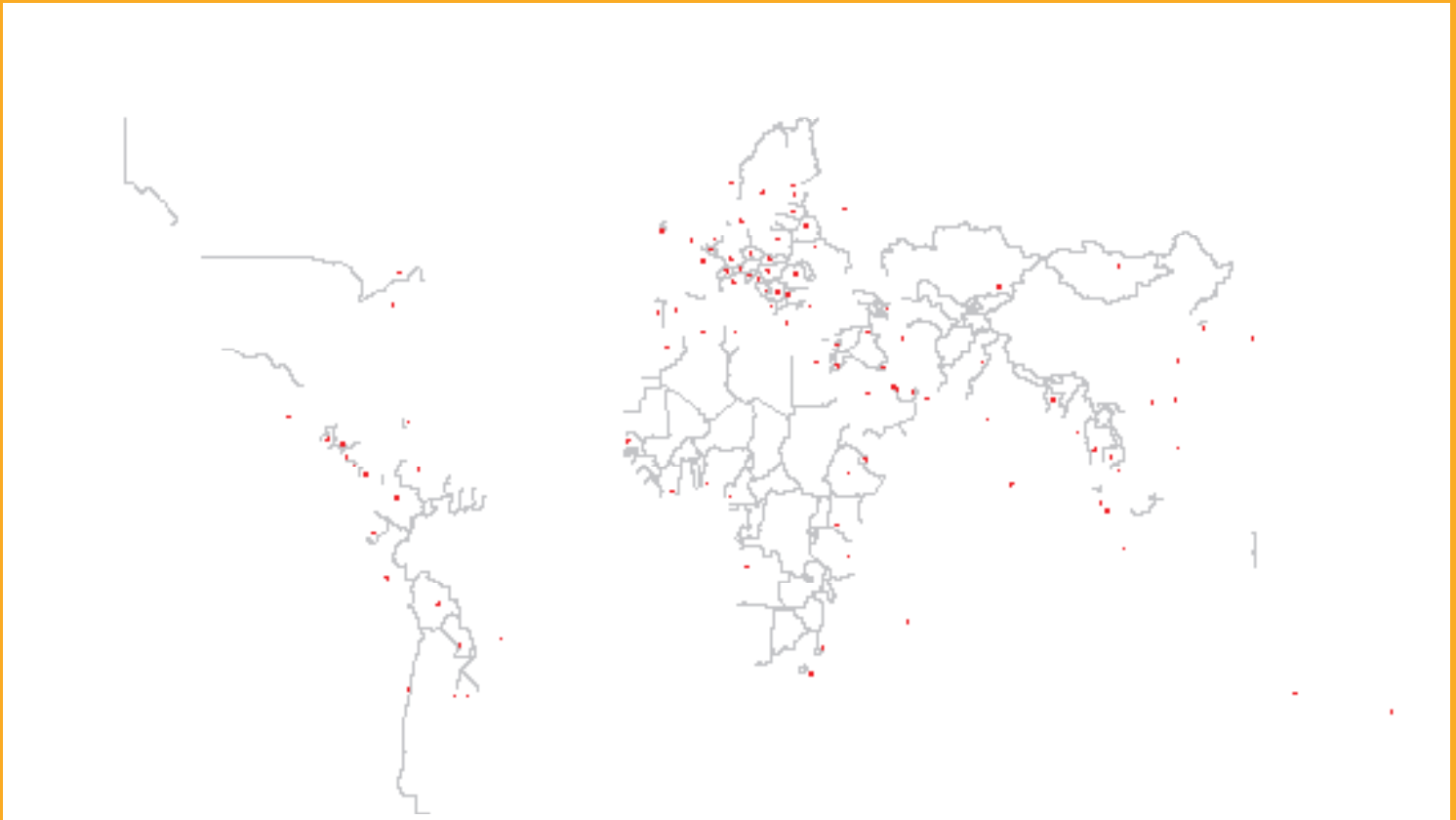
SEGMENTAL

WABO®GUTTERFLEX

A flexible fabric reinforced neoprene profile that collects and drains excess amounts of moisture through an optional drain tube that exhibits similar flexibility

- Collects and moves water away from expansion joint openings.
- Minimizes material elongation.
- Excellent resistance to cleaning chemicals or other harsh environments.
- +/- 100% movement capability.

GLOBAL BUT LOCAL PARTNERSHIP



WE ARE SIKA

With more than 100 years of experience, Sika is a worldwide innovation and sustainability leader in the development and production of systems and products for commercial and residential construction, as well as the transportation, marine, automotive, and renewable energy manufacturing industries.

Sika has offices in 103 countries with over 400 manufacturing facilities and more than 33,000 employees worldwide. With annual sales of CHF 11.24 billion in 2023, our commitment to quality, innovation, and the environment as well as putting our customer's needs first, encompasses why Sika is the global leader in our industries.



Our most current General Sales Conditions shall apply. Please consult the most current local Product Data Sheet prior to any use.

© Sika Corporation, rev 02/2024

SIKA CORPORATION
201 Polito Avenue
Lyndhurst, NJ 07071 USA
Phone 201-933-8800
usa.sika.com

WATSON BOWMAN ACME
95 Pineview Dr.
Amherst, NY 14228 USA
Phone 716-691-7566
www.watsonbowmanacme.com

BUILDING TRUST

