



EXPANSION JOINT SOLUTIONS FOR TRANSPORTATION

BUILDING TRUST

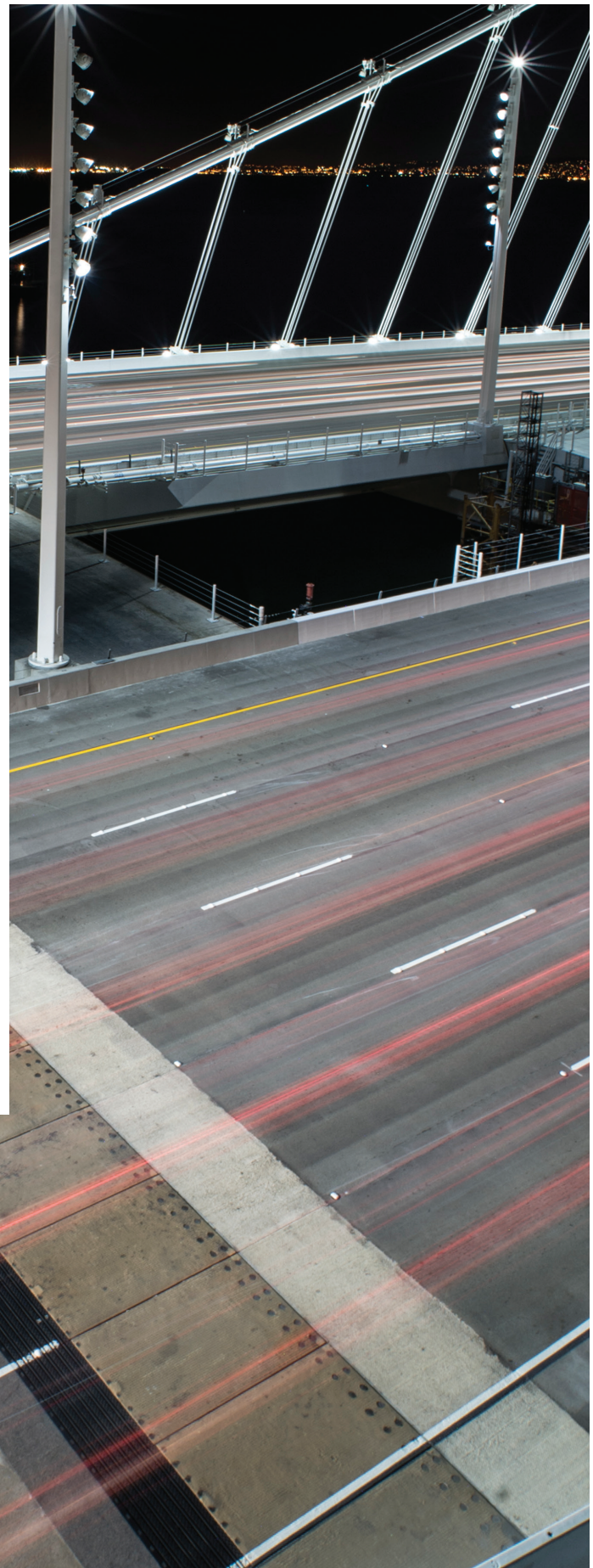


PERFORMANCE AND PROTECTION IN NEW CONSTRUCTION, MAINTENANCE AND PRESERVATION

Structures are made to move. Often overlooked, expansion joints add to their overall integrity by giving them the flexibility to move with the surrounding substrate. Without expansion joints, concrete and structures would eventually crack and fall apart over time.

Water damage can be equally damaging. Unseen leaks over time may corrode and degrade the structure's integrity.

For 70 years, WBA has proudly led the industry in the manufacture and design of expansion joint systems to meet the unique demands of projects across the globe. We are committed to providing our customers with the most efficient and responsible solutions.



MARKETS WE SERVICE

Watson Bowman Acme provides technical support and product solutions for the most complex and challenging application, with deep expertise across many industries

BRIDGES



TUNNELS



TRANSIT



PIERS, DOCKS AND WHARVES



AIRPORTS



PEDESTRIAN AND FOOT BRIDGES



APPLICATION

Small Movement • Medium Movement • Large Movement
Headers and Nosing • Specialty Cover Plates

PRODUCT SOLUTIONS



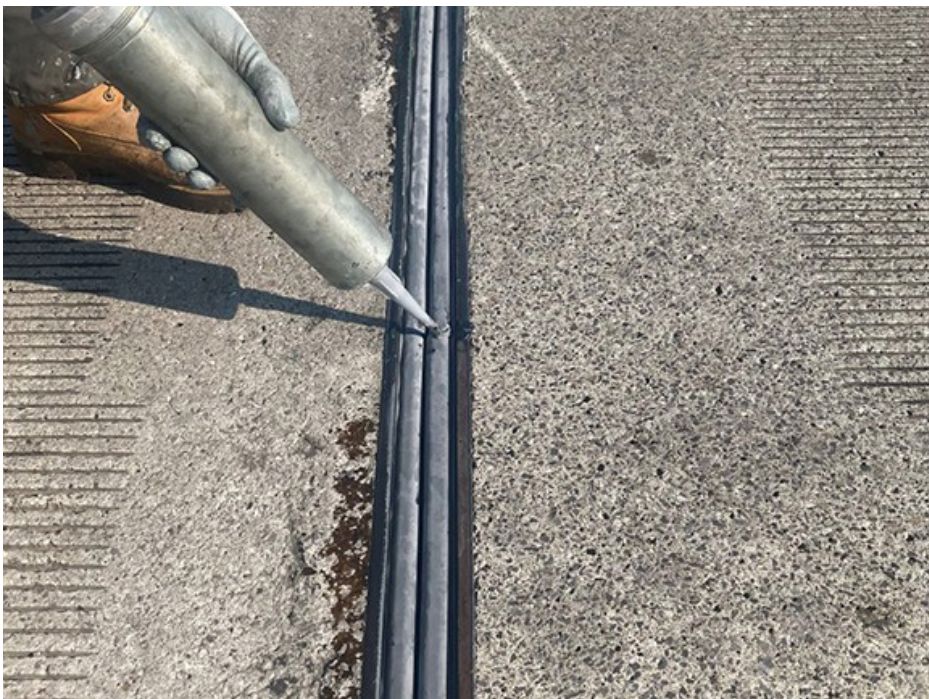
HEADERS AND SPALL REPAIR

RECOMMENDED FOR:

- Expansion joint header for new and restoration applications
- Spall repair of existing headers and adjacent concrete decks
- Patching airport concrete runways and tarmac areas

PRODUCTS:

- WaboCrete® II
- Emcrete II
- Wabo®SurfaceMend
- Sikadur® 72 JNS
- Sika Pronto 500 PPC
- Wabo®Elastopatch



FOAM SEALS

RECOMMENDED FOR:

- Small movements up to +/- 60%
- Watertight applications
- Projects where labor is limited and efficiency is required

PRODUCTS:

- Wabo®FS Bridge Seal
- BEJS by Sika Emseal
- Wabo®Evazote
- Wabo®XPE

PRODUCT SOLUTIONS (continued)



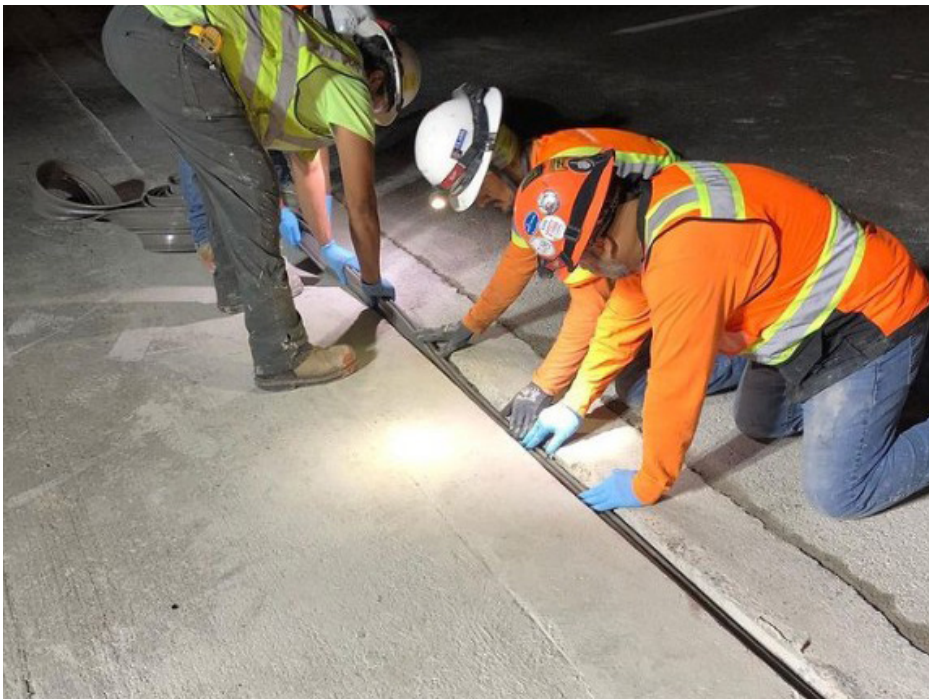
JOINT SEALS

RECOMMENDED FOR:

- Small to medium movements
- Watertight and water-resistant applications
- Maintenance crews and others in need of quick repairs and short traffic closures

PRODUCTS:

- Jeene®
- Wabo®Compression Seal
- Wabo®Silicone Seal
- Wabo®SPS
- Wabo®Expandex



SEGMENTAL JOINT SYSTEMS

RECOMMENDED FOR:

- Large service and seismic movements
- Projects requiring heavy-duty solutions which can be repaired or replaced from the top of a bridge deck
- Areas with fast-moving traffic requiring sound attenuation

PRODUCTS:

- Jeene®
- Wabo®Compression Seal
- Wabo®Silicone Seal
- Wabo®SPS
- Wabo®Expandex

PRODUCT SOLUTIONS (continued)



ARMORED JOINT SYSTEMS

RECOMMENDED FOR:

- Large, multidirectional and seismic movements
- Design-Build projects or projects requiring customized solutions
- Cast-in-place watertightness
- Heaviest loads and fast traffic

PRODUCTS:

- Wabo®Fab Package
- Wabo®Modular
- Wabo®Modular beta Series
- Wabo®X-Cel Modular
- Wabo®Finger Joint
- Wabo®Finger Plus
- Wabo®Trident Finger Joint
- WaboCrete®/ Wabo® StripSeals



TUNNEL SEALS

RECOMMENDED FOR:

- Immersed, bored tunnels and aqueducts
- Anywhere a watertight seal is needed that is capable of taking on large movements while withstanding high water pressure.
- For new tunnels or rehab of existing tunnels
- BABA (Buy America Build America) requirements

PRODUCTS:

- Omega-shaped Tunnel Seal
- In-house designed clamping system
- Fire-rated Foams

FULL PROJECT SUPPORT

As your strongest partner, not only will Watson Bowman Acme provide you with customized expansion joint solutions, we will also support your business throughout each phase of your project.



DESIGN AND
ENGINEERING SUPPORT



TECHNICAL SERVICES



ESTIMATING



ORDER MANAGEMENT

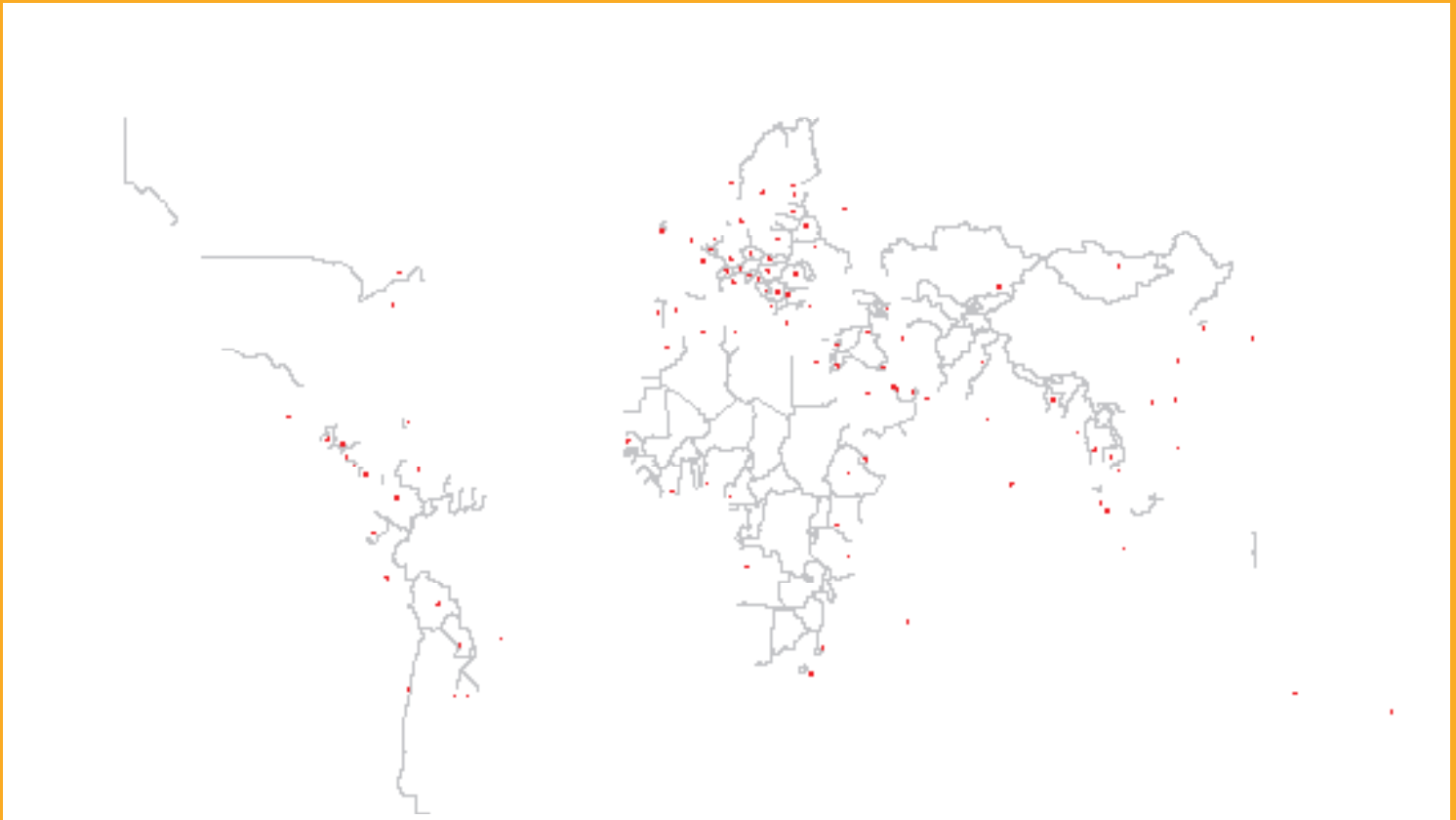


NEW INSPECTION SERVICES

Contact inspectionsservices@watsonbowmanacme.com to learn more about outsourcing the expansion joint portion of your inspection to one of our field experts



GLOBAL BUT LOCAL PARTNERSHIP



WE ARE SIKA

With more than 100 years of experience, Sika is a worldwide innovation and sustainability leader in the development and production of systems and products for commercial and residential construction, as well as the transportation, marine, automotive, and renewable energy manufacturing industries.

Sika has offices in 103 countries with over 400 manufacturing facilities and more than 33,000 employees worldwide. With annual sales of CHF 11.24 billion in 2023, our commitment to quality, innovation, and the environment as well as putting our customer's needs first, encompasses why Sika is the global leader in our industries.



Our most current General Sales Conditions shall apply. Please consult the most current local Product Data Sheet prior to any use.

© Sika Corporation, rev 02/2024

SIKA CORPORATION
201 Polito Avenue
Lyndhurst, NJ 07071 USA
Phone 201-933-8800
usa.sika.com

WATSON BOWMAN ACME
95 Pineview Dr.
Amherst, NY 14228 USA
Phone 716-691-7566
www.watsonbowmanacme.com

BUILDING TRUST

