

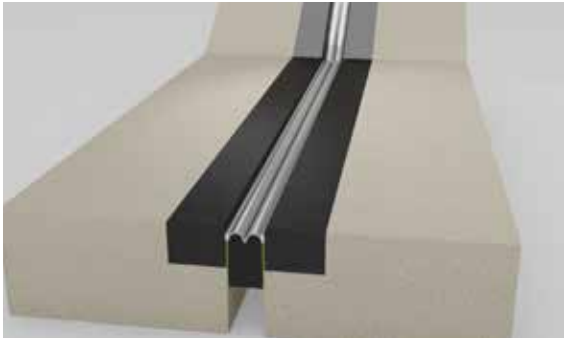
**Watson  
Bowman  
Acme**

# Wabo<sup>®</sup>FS Bridge Seal

**Pre-compressed, Foam-supported  
Silicone Bridge Expansion Joint System**

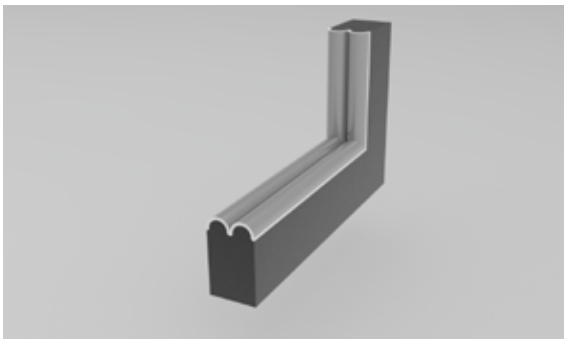
Engineered specifically for bridges to support long-term cycling and joint sealing performance in all climates and thermal shock conditions.

**Your Strongest Partner for  
Expansion Control Systems**



# What is Wabo®FS Bridge Seal?

Wabo®FS Bridge Seal is a foam-supported silicone joint seal for bridges made of monolithic foam construction. The pre-compressed design allows for ease of installation and the flexibility to handle variations in joint size.



Made of a 100% acrylic impregnated polyurethane foam seal, and coated with a highway grade UV stable silicone, the system is designed to provide the best-in-class water and fuel resistance.

The Wabo®FS Bridge Seal System has been validated and passes cyclic testing. This procedure determines the durability and performance of the joint system during 200 cycles in compression and tension, at severe skews and various temperature ranges.

Wabo®FS Bridge Seal is capable of accommodating movement to +/-60% of the joint opening. Uniform bellows allow free movement of the foam seal system under its entire movement range, without initiating tension in the silicone surface seal.



---

# Where is Wabo®FS Bridge Seal used?

Recommended applications include:

- Sealing joints on bridges and highways
- Secondary seal for other expansion joint systems
- Retrofitting, maintenance and preservation of bridge expansion joints
- Parapets and soundwalls

---

# What features and benefits set Wabo®FS Bridge Seal apart?

FEATURES	BENEFITS
<b>Monolithic foam construction</b>	Base foam construction manufactured in one piece that will not delaminate within product's design movement range.
<b>State-of-the-art manufacturing</b>	Manufactured with no fillers or microspheres for industry leading lowest compression set.
<b>Factory assembled joint transitions available</b>	Made to meet custom job configurations where a field configured transition is impractical. Critical elements manufactured under controlled conditions, and eliminates costly field labor.
<b>Armorless technology</b>	Does not require any invasive anchoring or bolting, and can be used in retrofit of armored joints.
<b>Movement capacity</b>	Designed for +/-60% of joint opening, and accommodates rapid rates of joint movement.
<b>Simplicity of installation</b>	Allows for quick joint repairs, short traffic closures and accommodates a large range of joint placement widths.

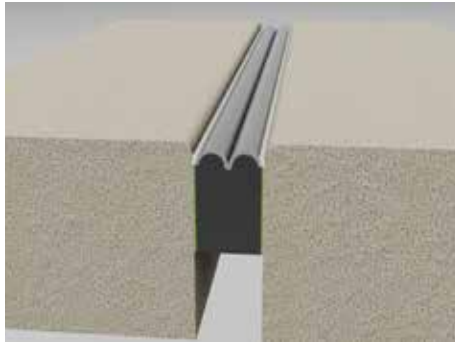
## Accessories for your best application:

### Wabo®FS Bridge Seal System Accessories:

- 
- Install with Wabo®Gel Adhesive, a joint substrate epoxy
  - For finishing edge bead and top silicone splice, Wabo®Sil Adhesive is recommended
-

# Full silicone capabilities

Watson Bowman Acme is leading the bridge maintenance and preservation industry with its full line of silicone technology bridge joint systems.

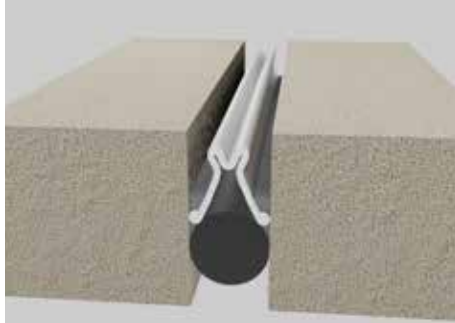


## Wabo®FS Bridge Seal

Wabo®FS Bridge Seal is a pre-compressed, silicone coated, self-expanding foam bridge joint system. Comprised of acrylic impregnated polyurethane foam and coated with a highway grade UV Stable silicone, the foam seal is designed to be permanently bonded to the joint substrate.

### FEATURES:

- Monolithic foam construction
- Manufactured with no fillers or microspheres for industry leading lowest compression set
- Factory assembled joint transitions available
- Armorless technology
- Designed for +/- 60% of joint opening, and accommodates rapid rates of joint movement.
- Simplicity of installation

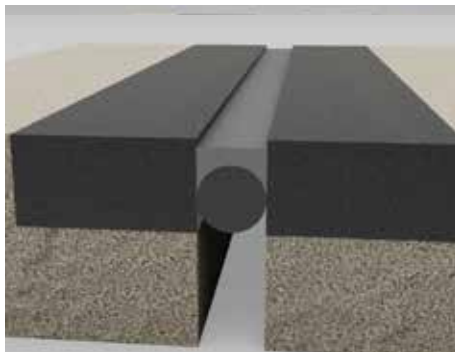


## Wabo®SPS

The Wabo®SPS expansion joint system is a preformed silicone joint sealing system designed to accommodate movements and varying joint widths on bridges and other civil structures requiring watertightness of expansion joints.

### FEATURES:

- Extruded silicone profile
- Flexible movement range
- Ease of installation
- Chemical resistance
- High Peel Strength adhesive



## Wabo®SiliconeSeal

Wabo®SiliconeSeal is a dynamic, high performance, two-part silicone sealant designed for a variety of bridge expansion joint applications.

### FEATURES:

- Designed for horizontal applications
- No priming of interfaces required
- Fully cures within 4 hours
- Movement capability +100%/-50%
- Minimizes debris accumulation
- Excellent for varying joint widths

**For more information visit [watsonbowmanacme.com](http://watsonbowmanacme.com)**