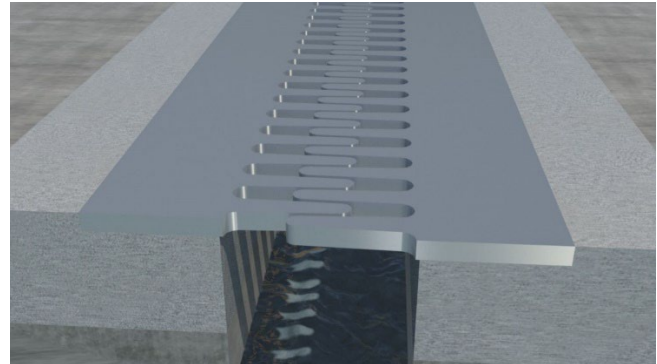


# Wabo® Finger Joint (FIN)

Cantilevered, Uni-directional Finger Joint System

Features	Benefits
Impact Resistance	Robust design, high performing product, resilient to repetitive loading
Ease of Installation	Single piece installation, simply drop in place with no onsite fabrication
Sound Attenuation	Low height profile engineered to reduce noise
Fully Compliant	AASHTO standards
Add-on Features	Neoprene Gutter Trough Bulkhead Form Work Level Angles



## KEY FEATURES:

- Designed and manufactured to meet your unique and complex projects.
- Robust design to accommodate high impact and repetitive loading conditions
- Simple one piece / full length installation
- Accommodates AASHTO design requirements for vehicular loads and opening requirements
- Optional drain trough and bulkhead available

## DESCRIPTION:

Wabo® Finger Joint cantilevered system sets the benchmark for the use and application of finger joint technology. Single direction of movement ranging from 4 to 18". Simple one piece / full length factory assembled allows for quick installation. Enhanced system functionality and installation experience by adding a neoprene gutter trough or bulkhead form.

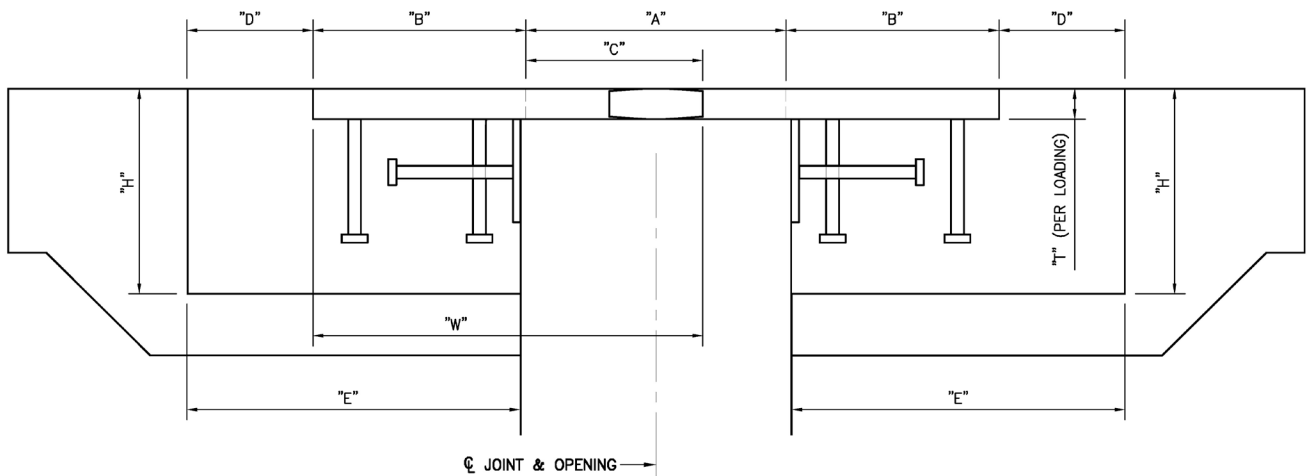
## RECOMMENDED FOR:

- New construction that contains uni-directional movements where finger joint technology is preferred
- Retro-fit applications where shallow blockout geometry exist

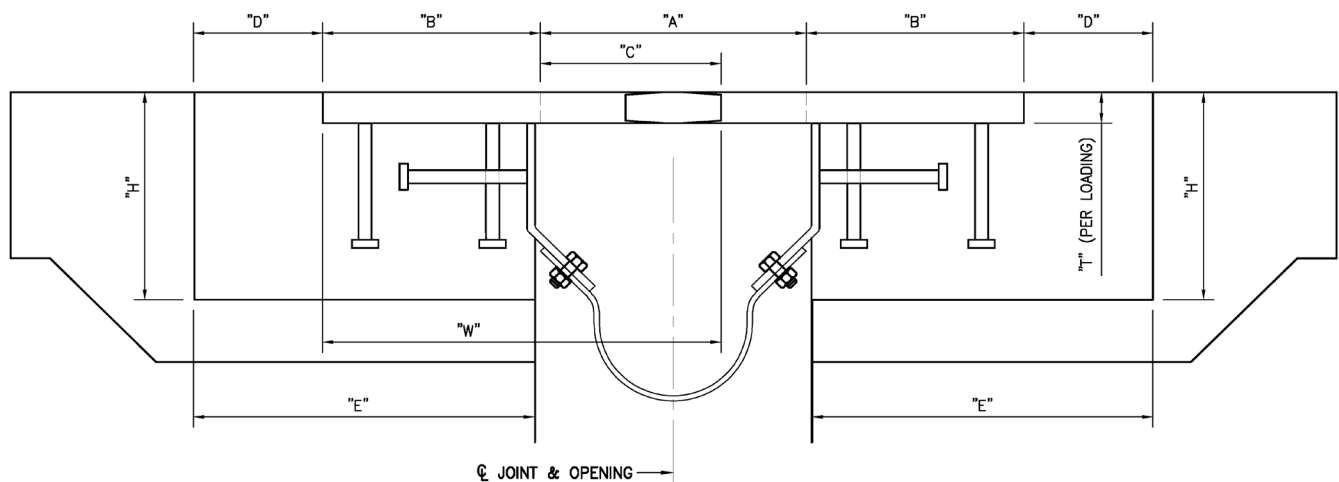
**PACKAGING/COVERAGE:**

- Finger plates and support system components packaged as complete, factory assembled with the option for assemblies to suit staged or full-length installation.
- Optional drain trough or bulkhead can be installed at the factory.
- Wabo<sup>®</sup>PrimaLub packaged in one (1) gallon containers.

**TECHNICAL DATA:**



**FINGER JOINT SECTION B-B  
"C" - CANTILEVER**



**FINGER JOINT SECTION B-B  
"C" - CANTILEVER WITH TROUGH**

## Finger Joint Section B-B: Cantilever

Finger Joint Size	Cantilever + Q4:AB4	Joint Opening "A"			Bolt Landing Length "B"	Finger Length "C"	Conc. Pour Access "D"	Blockout Width "E"	Blockout Depth "H"	Plate Width "W"	Plate Thickness "I"
		MIN.	MID.	MAX.							
400C	4	7.5	9.6	11.5	10.25	6.5	6	16	10	16.75	1
600C	6	9.5	12.5	15.5	10.25	8.5	6	16	10	18.75	1.25
900C	9	12.5	17	21.5	10.25	11.5	6	16	10	21.75	1.5
1200C	12	15.5	21.5	27.5	10.25	14.5	6	16	10	24.75	1.75
1500C	15	18.5	25	33.5	10.25	17.5	6	16	10	27.75	2
1800C	18	21.5	30.5	39.5	10.25	20.5	6	16	10	30.75	2.25

"C" = Cantilevered

### Cantilevered Finger Support Plates

- Fabricated with downward taper towards end of fingers to make for smooth ride and not to interfere with snow removal efforts

### INSTALLATION SUMMARY:

- Concrete** - Concrete interface must be dry and clean (free of dirt, coatings, rust, greases, oil and other contaminants), sound and durable. Loose, contaminated, spalled, deteriorated and/or delaminated concrete must be removed to sound concrete and repaired prior to placement of the expansion control system. New concrete must be cured (minimum of 14 days recommended).
- Prepare blockout to proper widths and depths, and place formwork.
- Using temporary lifting devices, set assembly into proper position and joint opening width in the roadway surface.
- Pour concrete into blockout area, making sure all vent holes are filled with concrete at the completion of the pour.
- Temporary lifting devices are removed as soon as practical to allow system movement with adjacent construction.
- Make certain the most current version of the product data sheet is being used. Please consult the website ([www.watsonbowmanacme.com](http://www.watsonbowmanacme.com)) or contact a customer service representative at 1-800- 677-4922.
- Proper application is the responsibility of the user. Field visits by Watson Bowman Acme personnel are for the purpose of making technical recommendations only and not for supervising or providing quality control on the jobsite.

**OPTIONAL GUTTER INSTALLATION:**

- If gutter is not pre-assembled, at least 24 hours after completion of initial installation and setting of finger joint assembly, remove finger plates by removing the connection pins.
- Apply Wabo<sup>®</sup>PrimaLub to machined cavity along each side of support plates, and a small portion on the rubber lug of gutter.
- Insert bottom lug of gutter into machined cavity and insert top lug into cavities on each side of gutter using a seal installation tool.
- Remove excess Wabo<sup>®</sup>PrimaLub.

**FOR BEST RESULTS:**

- Shelf life of chemical components is 1 year.
- Periodically inspect connection pins for tightness, and re-torque to WBA recommendations as needed. Consult a Watson Bowman Acme Technical Field Service and approved shop drawing Installation Procedure.
- Consult Watson Bowman Acme Technical Field Service and Shop Drawing Installation Procedure.

**LIMITED WARRANTY:**

Watson Bowman Acme Corp. warrants that this product conforms to its current applicable specifications. WATSON BOWMAN ACME CORP. MAKES NO OTHER WARRANTY, EXPRESS OR IMPLIED, INCLUDING ANY WARRANTY OF MERCHANTABILITY OR WARRANTY OF FITNESS FOR A PARTICULAR PURPOSE. The sole and exclusive remedy of Purchaser for any claim concerning this product, including, but not limited to, claims alleging breach of warranty, negligence, strict liability or otherwise, is the replacement of product or refund of the purchase price, at the sole option of Watson Bowman Acme Corp. Any claims concerning this product shall be submitted in writing within one year of the delivery date of this product to Purchaser and any claims not presented within that period are waived by Purchaser. IN NO EVENT SHALL WATSON BOWMAN ACME CORP. BE LIABLE FOR ANY SPECIAL, INCIDENTAL, CONSEQUENTIAL (INCLUDES LOSS OF PROFITS) OR PUNITIVE DAMAGES. Other warranties may be available when the product is installed by a factory trained installer. Contact your local Watson Bowman Acme representative for details. The data expressed herein is true and accurate to the best of our knowledge at the time published; it is, however, subject to change without notice. *Watson Bowman Acme Corp. reserves the right to amend or withdraw any information contained herein without notice and will not be responsible or liable for any inaccuracy or ambiguity of any information contained herein.*

**RELATED DOCUMENTS:**

- Material Safety Data Sheets
- Wabo<sup>®</sup>Finger Joint Technical Specification
- Wabo<sup>®</sup>Finger Joint Project Shop Drawings
- Wabo<sup>®</sup>Finger Joint Installation Procedure
- Wabo<sup>®</sup>Finger Joint Datasheet