

Wabo®QuakeWall (QWE)

High Performance Seismic Wall Panel

Features	Benefits
• Tension Hold Down	Constant tension pulls panel tight to the exterior, even during seismic displacements. No need to reset after a seismic event.
• Panel Lock	Wall panels are locked from swinging open during everyday service. Designed to prevent wall panels from being pried open during everyday service.
• Slide Guide System	Guides the panel out of the blockout during seismic events and prevents scraping damage to the exterior wall cladding.
• Pre-assembled components	Designed for ease of installation with system components that simply drop-in the blockout and screw in place. Ships as 5 pre-assembled components which are available in 3-, 6- and 10-foot lengths.
• Maintenance Access	Easy access to the joint gap after installation for inspection and maintenance purposes.
• Open pan with rid frame support design	Allows for ease of a variety of in-fill materials.
• In Field Adjustable	Easy trimming up to 12" to field fit.



DESCRIPTION:

Wabo®QuakeWall (QWE) is a high-performance lightweight aluminum exterior/interior wall panel system, capable of accommodating large multi-directional thermal/seismic forces and displacements. Its low height open rectangular bed design allows for easy installation of matching façade materials.

Constant tension allows the panel to hug the structure during even the largest seismic movements. It's patented slide/rider system smoothly guides the panel up and out of the blockout, with slide guide system preventing damage.

The tension hold-down system eliminates the need for extraneous cabling, safety issues and closing force variability. There is no need to reset the joint after an extreme event, tension pulls the panel back into its original resting place.

RECOMMENDED FOR:

- All interior/exterior wall joints requiring large movement capabilities, such as seismic events or extreme wind conditions.
- For use in various construction projects, including Healthcare, Transportation, Recreation, Retail, Commercial, Educational, and Parking Garages.



TECHNICAL DATA:

Movement Table

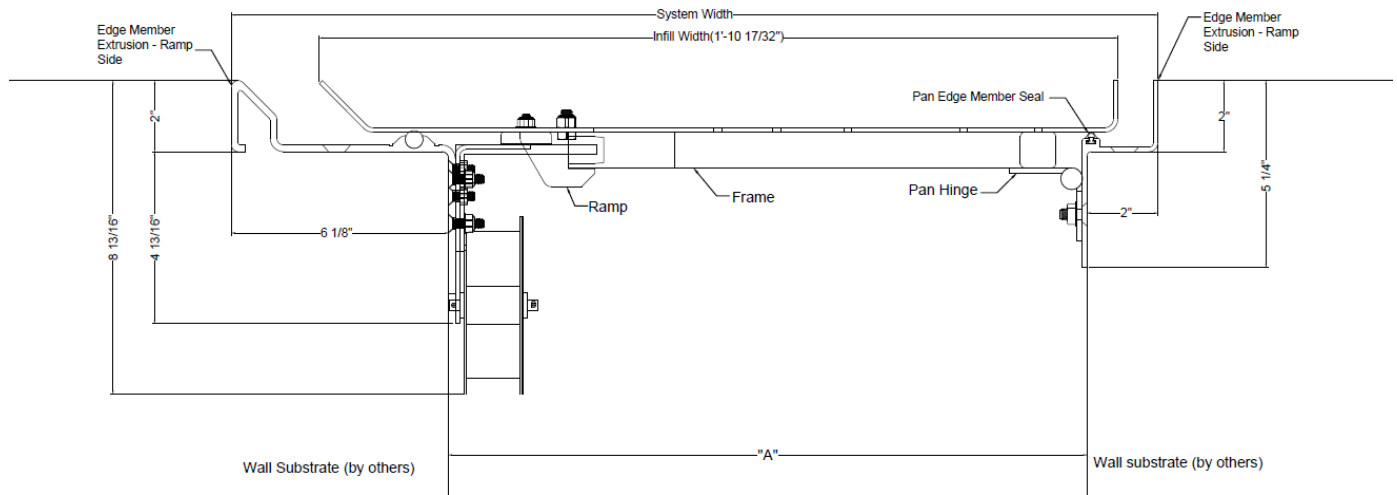
	Joint Opening in inches			(in.)
QWE	Min	Mid	Max	Movement Rating (MR)
1800	4	18	32	28
2000	4	20	36	32
2200	4	22	40	36
2400	4	24	44	40
2600	4	26	48	44
2800	4	28	52	48
3000	4	30	56	52
3300	4	33	62	58
3600	4	36	68	64

NOTE: Custom options available, contact a Watson Bowman representative to discuss project requirements.

PACKAGING:

- Palletized unless otherwise directed.
- QuakeWall shipping components include:
 - Hinge Side Component
 - Ramp Side Component
 - Structural Frame
 - Leveling Angle
 - Pan
- System available in 3-, 6- or 10-foot lengths.
- Panel in-fill supplied by others.
- Anchors not included, installer to select best anchors as per application.

COMPONENTS AND BLOCKOUT:



Installation Dimensions

Depth: 1-5/8", may vary for thick wall cladding.

Hinge side width: 3"

Opening side width: 5"

Panel Restoring Forces

Panel restoring forces ensure wall panels close after seismic events. QuakeWall panel restoring forces are between greater than 100lbs, depending on model size:

Panel Lock Forces

QWE 1800 - QWE 3600 panels remain locked against intrusive prying during thermal service ($\pm 3/4"$ typical). Locking force is greater than 500lbs.

Materials

QuakeWall is fabricated non-corrosive materials, including aluminum, polyurethane, nylon, and neoprene.



APPLICATION:

INSTALLATION SUMMARY:

- QuakeWall is designed for easy installation using 3 basic steps;
 1. Locate QuakeWall module (closed) into joint blockout.
 2. Screw edge members from outside (18 screws per 10-foot panel typical).
 3. Snap on reveal cover.
- Panel infill to match structure wall cladding to be supplied by others.
- Joint installation should be dimensioned and prepared to receive QuakeWall module as shown on WBA literature.
- Optional Wabo®GutterFlex product is available for additional water and debris protection. Please see Wabo®GutterFlex product data sheets for installation details.
- Protect all expansion joint components from damage during installation and protect finished installation from damage during other work activities.
- Expansion joint shall be installed in accordance with manufacturers' typical details and installation procedures.

FOR BEST RESULTS:

- Installation area should be flat, clean, and dimensionally accurate prior to installation.
- Ensure all screws are installed. Utilize screws that are rated for the substructure attachment.
- Panels have a greater than 100lb tension closing force, employ appropriate safety measures when opening and closing the panel.
- Proper installation is the responsibility of the user. Field visits by WBA personnel are for the purpose of making technical recommendations only.

LIMITED WARRANTY:

Watson Bowman Acme Corp. warrants that this product conforms to its current applicable specifications. WATSON BOWMAN ACME CORP. MAKES NO OTHER WARRANTY, EXPRESS OR IMPLIED, INCLUDING ANY WARRANTY OF MERCHANTABILITY OR WARRANTY OF FITNESS FOR A PARTICULAR PURPOSE. The sole and exclusive remedy of Purchaser for any claim concerning this product, including, but not limited to, claims alleging breach of warranty, negligence, strict liability or otherwise, is the replacement of product or refund of the purchase price, at the sole option of Watson Bowman Acme Corp. Any claims concerning this product shall be submitted in writing within one year of the delivery date of this product to Purchaser and any claims not presented within that period are waived by Purchaser. IN NO EVENT SHALL WATSON BOWMAN ACME CORP. BE LIABLE FOR ANY SPECIAL, INCIDENTAL, CONSEQUENTIAL (INCLUDES LOSS OF PROFITS) OR PUNITIVE DAMAGES. Other warranties may be available when the product is installed by a factory trained installer. Contact your local Watson Bowman Acme representative for details. The data expressed herein is true and accurate to the best of our knowledge at the time published; it is, however, subject to change without notice.

Wabo®QuakeWall_0423