

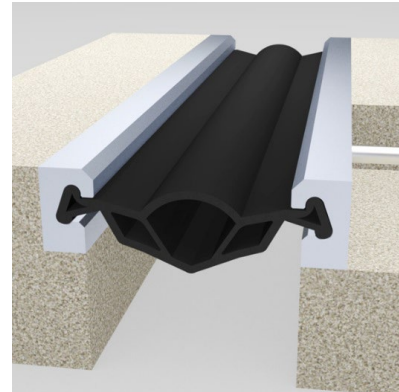
Wabo® StripSeal

Armored small movement expansion joint system

Features	Benefits
<ul style="list-style-type: none"> • Versatile movement 	Accommodates up to 8” of multi-directional movement exceeding ASHTO requirements
<ul style="list-style-type: none"> • Heavy duty 	Accommodates heavy duty loads and bridge deflections
<ul style="list-style-type: none"> • Watertight 	Continuous sealing element prevents water from leaking through the expansion joint opening

DESCRIPTION:

Wabo® StripSeal expansion joint system consists of an elastomeric gland mechanically locked between two steel edge members providing a superior watertight sealing system. The rugged design of the Wabo® StripSeal system can easily accommodate the high loads of vehicular traffic while effectively sealing expansion joints in bridges and structures with movements up to eight inches. Wabo® StripSeal systems can be manufactured to accommodate a variety of field configurations along with multidirectional movements. Machined Steel shapes maximize seal’s ability to be installed easily.



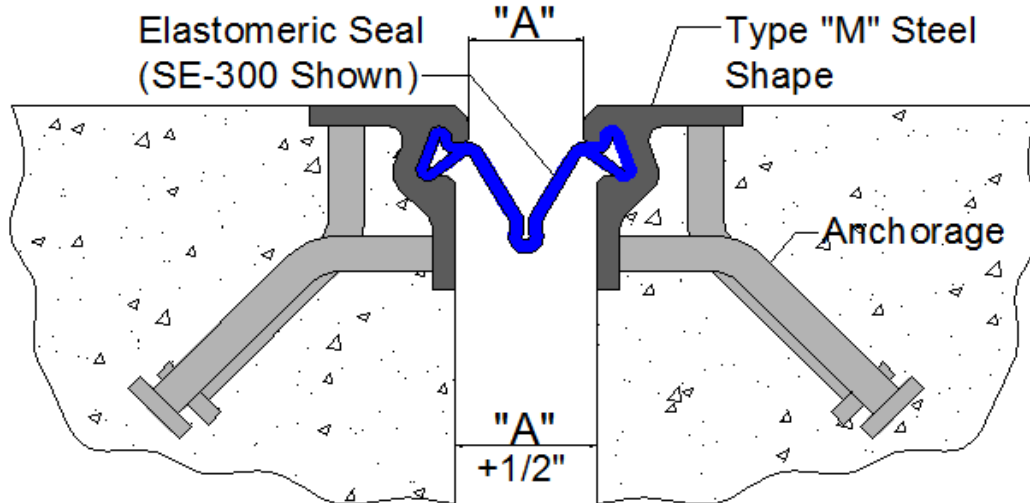
RECOMMENDED FOR:

- Skewed joints
- High impact and repetitive loading conditions
- Expansion joint applications with a maximum movement of 8.5 inches
- System able to handle multidirectional movement requirements.
- New construction or repair and maintenance of existing expansion joint systems

PACKAGING/COVERAGE:




- Steel extrusions are shipped in standard 20- foot lengths. Other lengths available, contact WBA for details.
- Rubber seals provided in continuous lengths, field cut and installed by contractor.
- Shipped on pallets per limitations of shipping methods.
- Wabo® PrimaLub – 1 gal container

TECHNICAL DATA:



Elastomeric Gland

The Wabo®StripSeal system utilizes three standard glands: SE, ES and EFE series. The elastomeric gland of the Wabo®StripSeal system can handle movements up to 8.5 inches (127mm). The elastomeric glands can be factory vulcanized for horizontal changes, or joint intersections. All glands are produced from neoprene rubber.

Steel Shape	Elastomeric Seal		
	SE Series	ES Series	EFE Series
			
A	X	x	X
E	X	x	X
M	X	x	X
R		X	X
Q	X	x	X

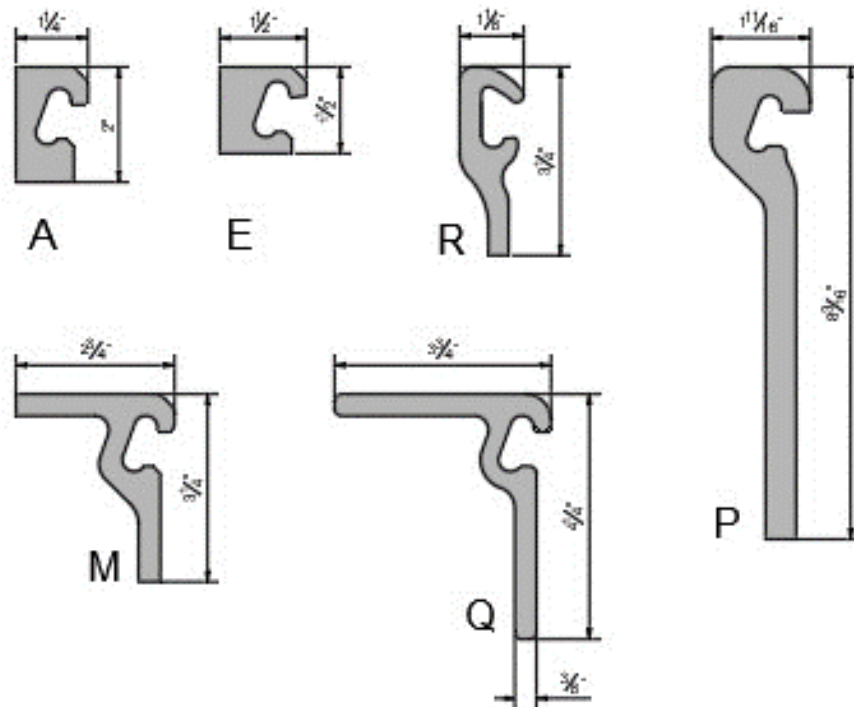
Movement Table

Model Number	Movement Range "A"						Min. Install Width	
	Min.		Max.		Total		in	mm
	in	mm	in	mm	in	mm		
SE Series								
SE-300	0.00	0	3.00	76	3.00	76	1.50	38
SE-400	0.00	0	4.00	102	4.00	102	1.50	38
SE-500	0.00	0	5.00	127	5.00	127	2.00	51
SE-800	0.50	13	8.50	216	8.00	203	2.00	50
ES Series								
ES-400	0.00	0	5.00	127	5.00	127	2.00	51
EFE Series								
EFE-400	0.50	13	4.50	114	4.00	102	2.00	51
Consult your WBA Representative for factory molded horizontal changes, severe skews or joint intersections.								

Move install width up 1/2" each SE

Steel Edge Members

The Wabo®StripSeal system incorporates the use of six several standard profile configurations. See details for profile configurations. All steel edge members are machined from ASTM A588 or A36 grade steel. Available in coated or uncoated finishes. Customers need to specify options when ordering.



Physical Properties (Elastomeric Gland)

PHYSICAL PROPERTY	ASTM TEST METHOD	REQUIREMENTS
Tensile Strength, min	D 412	2,000 psi (13.8 Mpa)
Elongation at Break, min	D 412	250%
Hardness, Shore A	D 2240	55 +/- 5
Oven Aging, 70 hrs. @ Tensile, max loss Elongation, max loss Change in Hardness	D 573	20% 20% 0 to 10 pts.
Oil Swell, 70 hrs. @212°F(100°C) Weight Change, max	D 471	45%
Ozone Resistance 70 hrs. @104°F(40°C)	D 1149	no cracks
Low Temperature Stiffening	D 2240	0 to +15

INSTALLATION SUMMARY:

- If the system is to be installed in sections, special care should be taken to the field weld details on shop drawings.
- The Wabo®StripSeal joint system is lifted and lowered into final position. The steel edge members are suspended into the blackout utilizing adjustable leveling devices.
- Before securing or casting the system to the structure, the joint opening of the system should be adjusted to the proper ambient temperature.
- Complete all bolted or welded connections to the superstructure. Install proper form work before concrete is laid. When casting the joint into the structure, proper compaction of concrete around the system is required.
- The neoprene elastomeric gland should be field installed in continuous lengths spanning the entire roadway width. Wabo®PrimaLub adhesive is used to lubricate the seal and steel edge member to aide in gland installation.
- Clean all excess adhesive from the edges of the joint opening and from the top of the seal as soon as possible.

OPTIONS/EQUIPMENT:

- Elastomeric gland installation tool, contact WBA for details.
- Certified welder to be utilized for field welding of sections.

FOR BEST RESULTS:

- Install when concrete substrate is clean, sound, dry, and cured (14 day minimum).
- Do not install if the joint's anticipated movement will exceed the system's movement range.
- Minimize splice points by installing seals in longest possible continuous lengths.
- Do not allow Primalub to freeze prior to installation. Store out of direct sunlight in a clean, dry location between 50°F and 90°F.
- Shelf life of Primalub is 1 year.
- Periodically inspect the applied material and repair localized areas as needed. Consult a Watson Bowman Acme representative for additional information.

- Make certain the most current version of the product data sheet is being used. Please consult the website (www.watsonbowmanacme.com) or contact a customer service representative.
- Proper application is the responsibility of the user. Field visits by Watson Bowman Acme personnel are for the purpose of making technical recommendations only and not for supervising or providing quality control on the jobsite.

RELATED DOCUMENTS:

- Material Safety Data Sheets
- Wabo[®]StripSeal Specification
- Wabo[®]StripSeal Sales Drawings
- Wabo[®]StripSeal Installation Procedure

LIMITED WARRANTY:

Watson Bowman Acme Corp. warrants that this product conforms to its current applicable specifications. WATSON BOWMAN ACME CORP. MAKES NO OTHER WARRANTY, EXPRESS OR IMPLIED, INCLUDING ANY WARRANTY OF MERCHANTABILITY OR WARRANTY OF FITNESS FOR A PARTICULAR PURPOSE. The sole and exclusive remedy of Purchaser for any claim concerning this product, including, but not limited to, claims alleging breach of warranty, negligence, strict liability or otherwise, is the replacement of product or refund of the purchase price, at the sole option of Watson Bowman Acme Corp. Any claims concerning this product shall be submitted in writing within one year of the delivery date of this product to Purchaser and any claims not presented within that period are waived by Purchaser. IN NO EVENT SHALL WATSON BOWMAN ACME CORP. BE LIABLE FOR ANY SPECIAL, INCIDENTAL, CONSEQUENTIAL (INCLUDES LOSS OF PROFITS) OR PUNITIVE DAMAGES. Other warranties may be available when the product is installed by a factory trained installer. Contact your local Watson Bowman Acme representative for details. The data expressed herein is true and accurate to the best of our knowledge at the time published; it is, however, subject to change without notice.

WaboStripSeal_0424